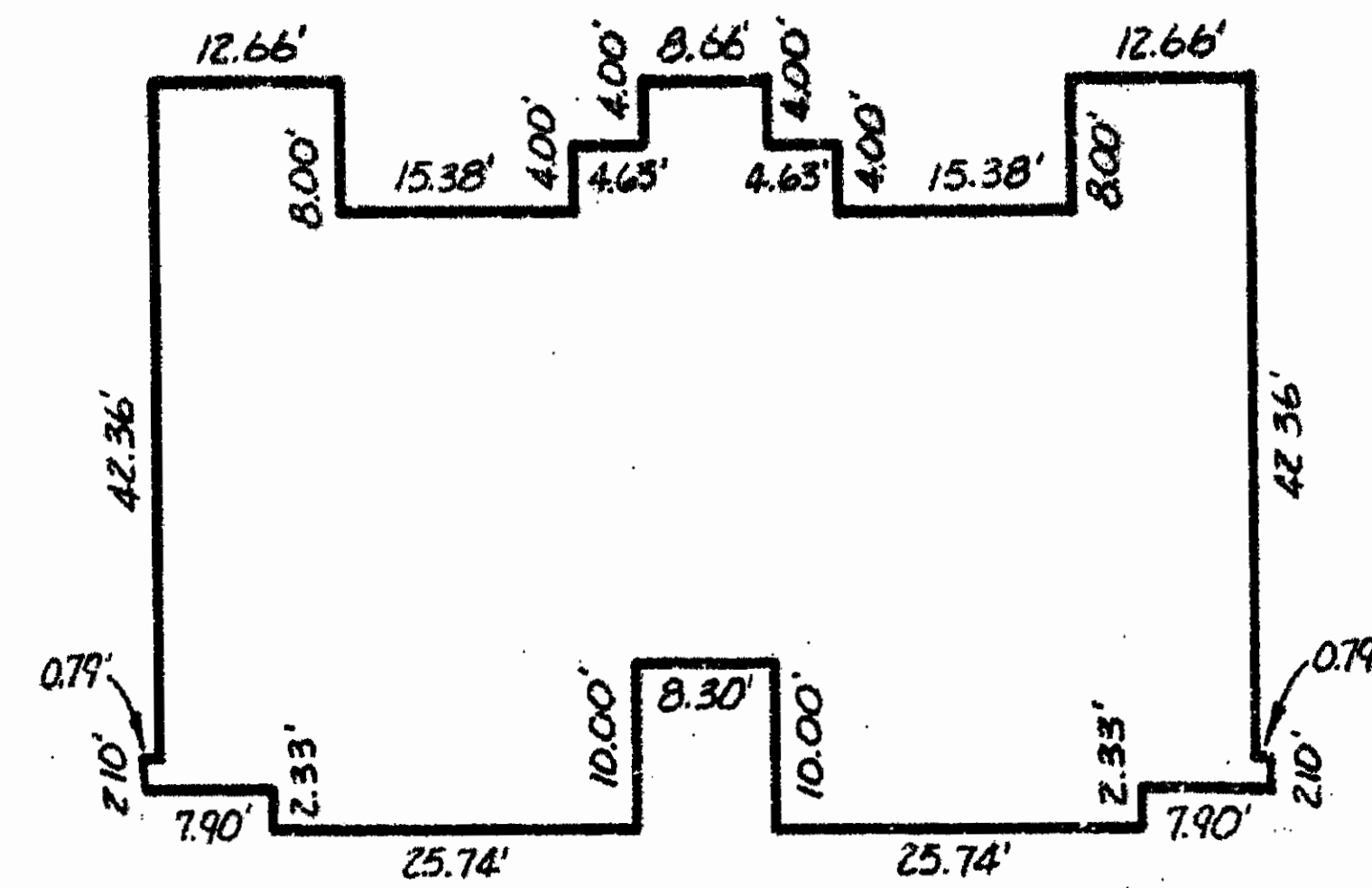
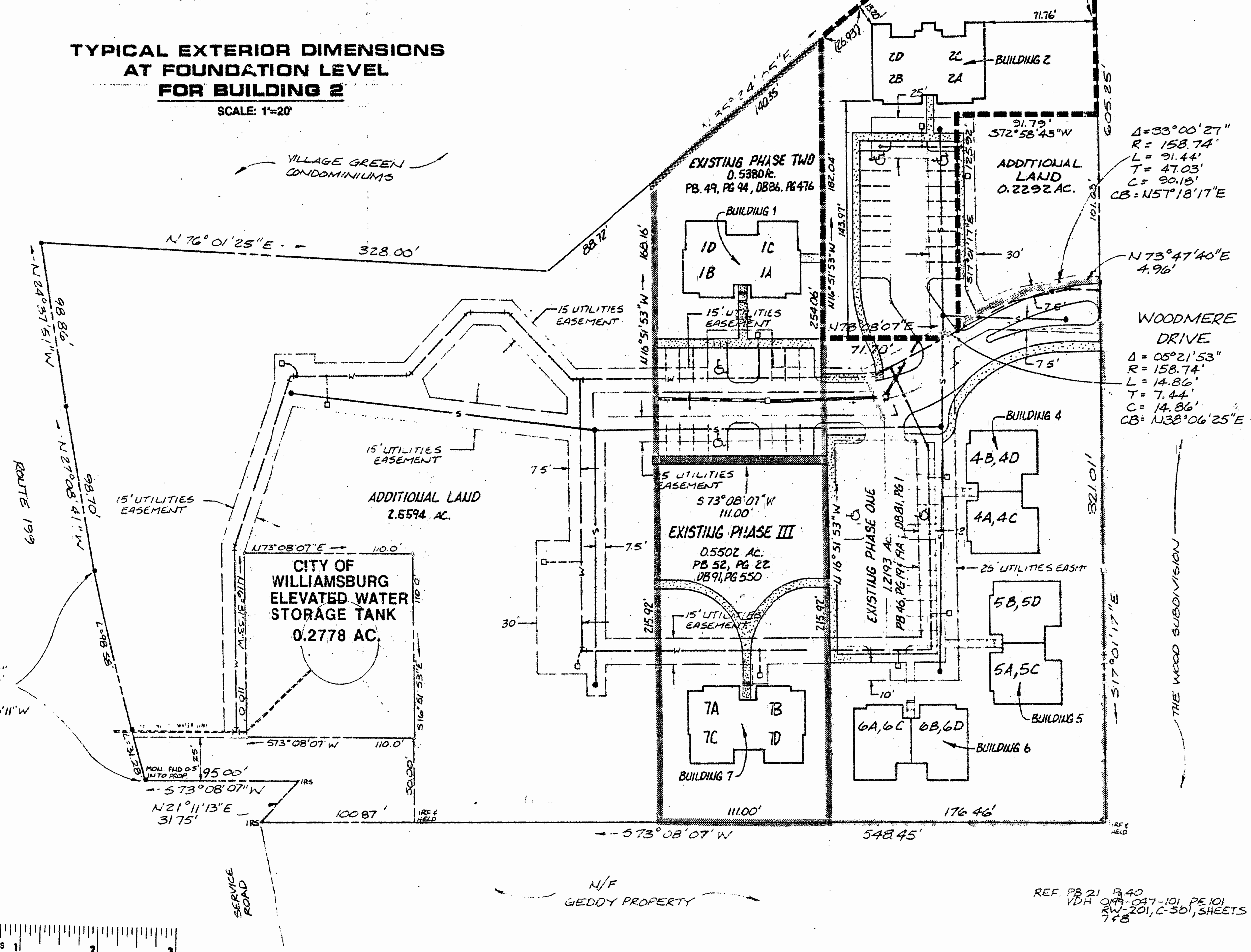


LOCATION MAP
SCALE: 1"=2000'



TYPICAL EXTERIOR DIMENSIONS AT FOUNDATION LEVEL FOR BUILDING 2
SCALE: 1"=20'

PHASE IV
0.7203 Ac.



NOTE: ALL UTILITY EASEMENTS SHOWN HEREON ARE HEREBY DEDICATED TO THE CITY OF WILLIAMSBURG (SEE "PLAT OF DRAINAGE / UTILITIES EASEMENTS", DATED AUG. 1987) DB 81, PG 423

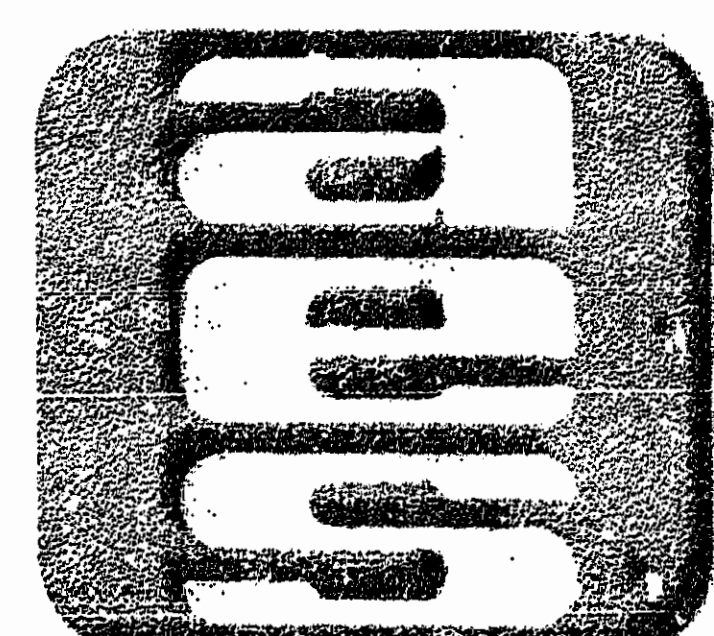
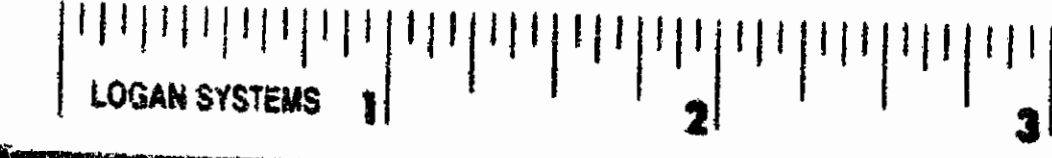
--- DENOTES PHASE BOUNDARY
--- DENOTES EXISTING PHASE BOUNDARY

$\Delta = 04^{\circ}09'19''$
 $R = 1790.63'$
 $L = 129.86'$
 $T = 64.96'$
 $C = 129.86'$
 $CB = N30^{\circ}25'11''W$

WE DO HEREBY CERTIFY THAT WE HAVE SURVEYED THE SUBMITTED LAND AND DO FURTHER CERTIFY THAT THIS PLAT SHOWING LOCATION AND DIMENSIONS OF THE SUBMITTED LAND IS ACCURATE AND THE PLAT COMPLIES WITH THE PROVISIONS OF SECTION 55-79.58 (a) OF THE CODE OF VIRGINIA AS AMENDED. ALL UNITS HAVE BEEN SUBSTANTIALLY COMPLETED.

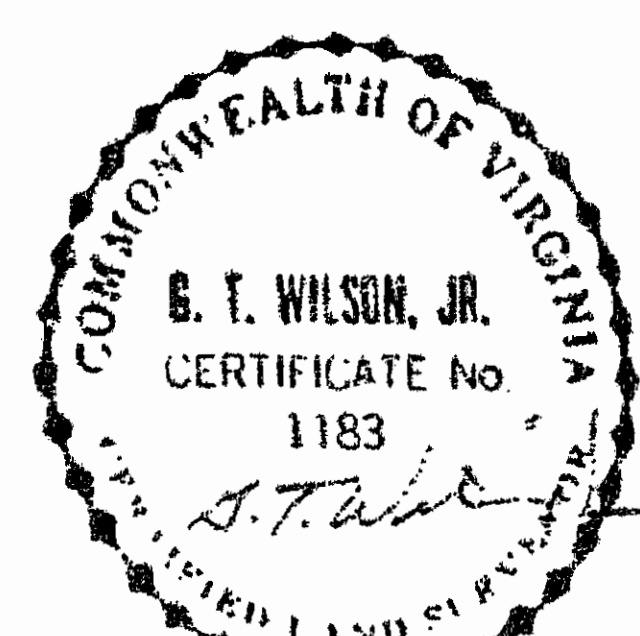
AES, A PROFESSIONAL CORPORATION

BY: G.T. Wilson, Jr.
G.T. WILSON, JR. C.L.S.



AES, a professional corporation
5248 Olde Towne Road, Suite 1
Williamsburg, Virginia 23185
(804) 253-0040
Engineering, Planning, Surveying

CONDOMINIUM PLAT
THE WOODLANDS A CONDOMINIUM
PHASE IV, BUILDING No. 2
OWNER/DEVELOPER : S.W.N. ASSOCIATES
CITY OF WILLIAMSBURG VIRGINIA



No.	DATE	REVISION / COMMENT / NOTE	BY

Designed	Drawn
Scale	Date
Project No.	6119
Drawing No.	EXHIBIT B