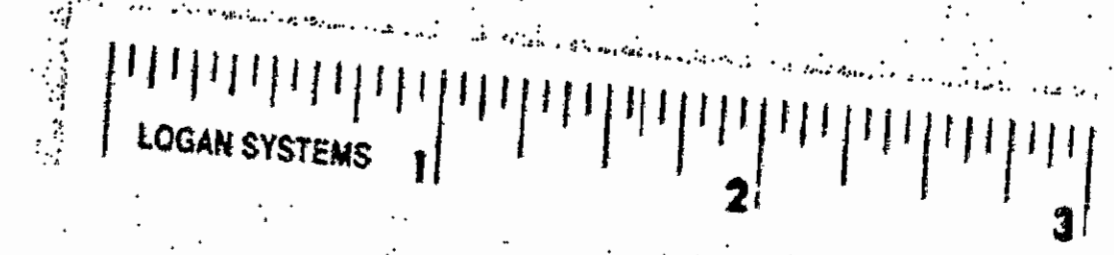
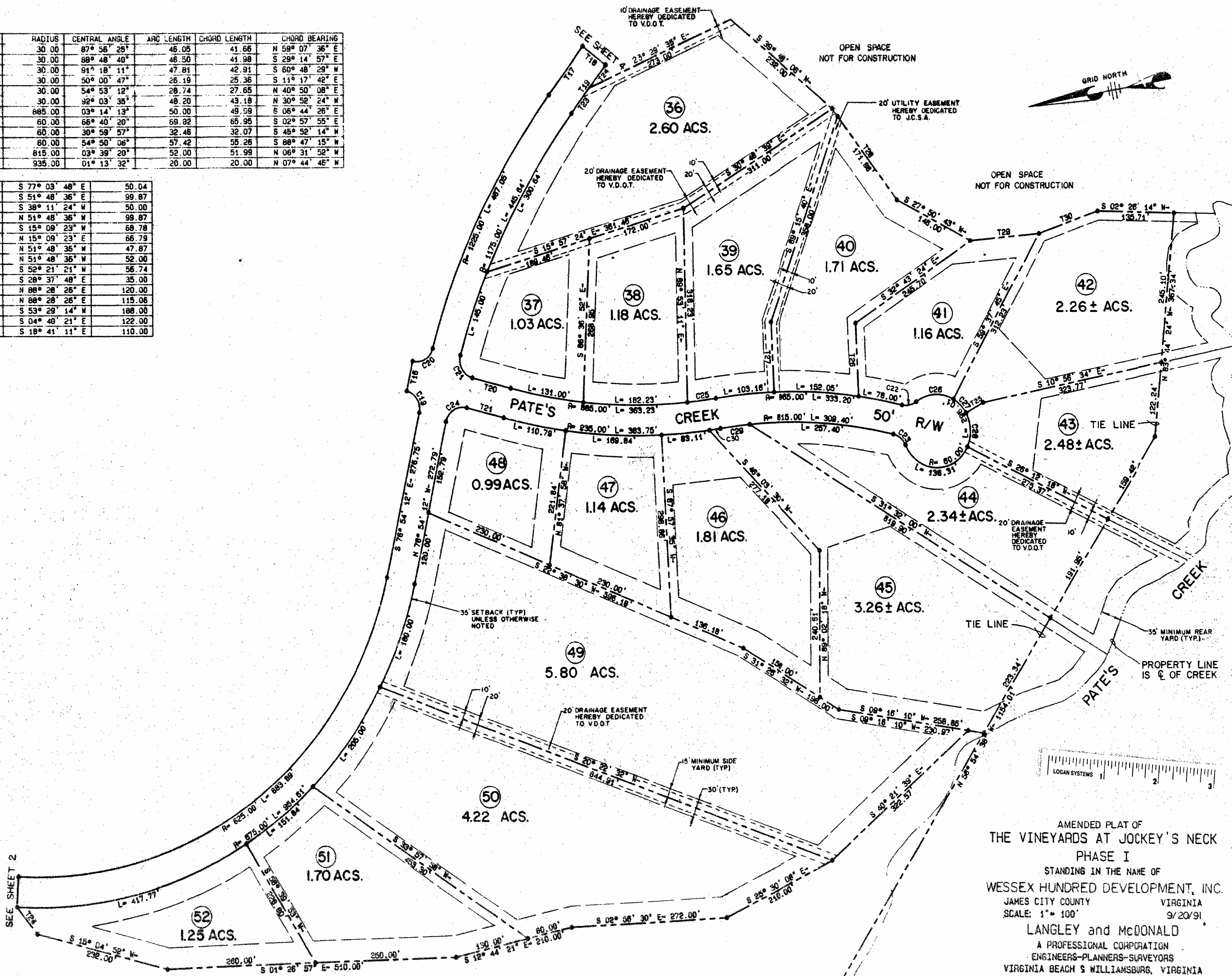


LABEL	RADIUS	CENTRAL ANGLE	ARC LENGTH	CHORD LENGTH	CHORD BEARING
C19	30.00	87° 56' 25"	46.05	41.66	N 59° 07' 36" E
C20	30.00	88° 48' 40"	46.50	41.98	S 29° 14' 57" E
C21	30.00	91° 18' 11"	47.81	42.91	S 60° 48' 29" W
C22	30.00	50° 00' 47"	26.19	25.36	S 11° 17' 42" E
C23	30.00	54° 53' 12"	28.74	27.65	N 40° 50' 08" E
C24	30.00	92° 03' 35"	48.20	43.18	N 30° 52' 24" W
C25	885.00	03° 14' 13"	50.00	49.99	S 06° 44' 26" E
C26	60.00	66° 40' 20"	69.82	65.95	S 02° 57' 55" E
C27	60.00	30° 59' 57"	32.48	32.07	S 45° 52' 14" N
C28	60.00	54° 50' 06"	57.42	55.26	S 88° 47' 15" W
C29	815.00	03° 39' 20"	52.00	51.99	N 06° 31' 52" W
C30	935.00	01° 13' 32"	20.00	20.00	N 07° 44' 46" W

T16	S 77° 03' 48" E	50.04
T17	S 51° 48' 36" E	99.87
T18	S 38° 11' 24" W	50.00
T19	N 51° 48' 36" W	99.87
T20	S 15° 09' 23" W	68.78
T21	N 15° 09' 23" E	66.79
T22	N 51° 48' 35" W	47.87
T23	N 51° 48' 36" W	52.00
T24	S 52° 21' 21" W	56.74
T25	S 28° 37' 48" E	35.00
T26	N 88° 28' 26" E	120.00
T27	N 88° 28' 26" E	115.06
T28	S 53° 29' 14" W	188.08
T29	S 04° 40' 21" E	122.00
T30	S 18° 41' 11" E	110.00



AMENDED PLAT OF  
 THE VINEYARDS AT JOCKEY'S NECK  
 PHASE I  
 STANDING IN THE NAME OF  
 WESSEX HUNDRED DEVELOPMENT, INC.  
 JAMES CITY COUNTY VIRGINIA  
 SCALE: 1" = 100'  
 9/20/91  
 LANGLEY and McDONALD  
 A PROFESSIONAL CORPORATION  
 ENGINEERS-PLANNERS-SURVEYORS  
 VIRGINIA BEACH & WILLIAMSBURG, VIRGINIA  
 SHEET: 3 OF 5