

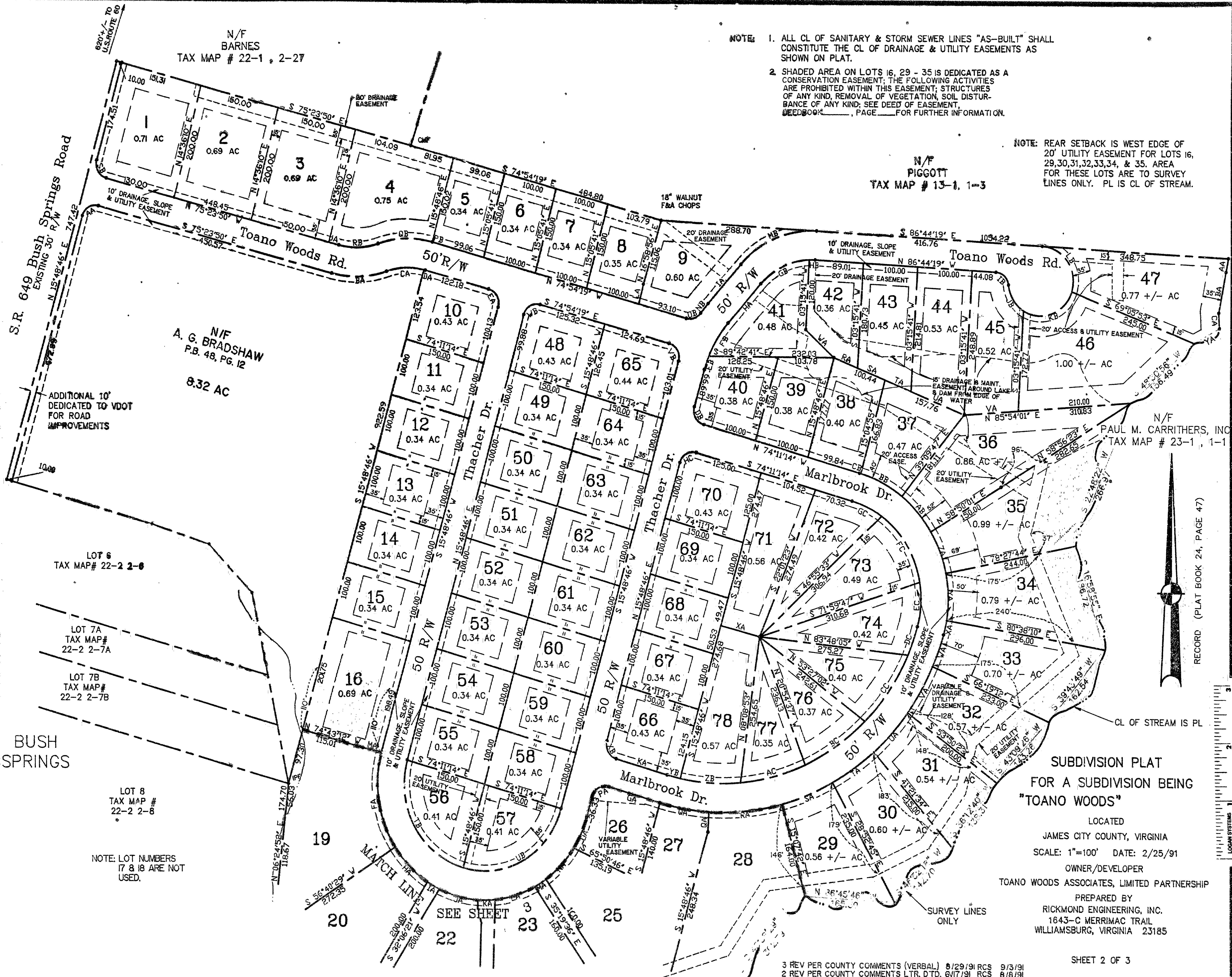
N/F BARNES TAX MAP # 22-1, 2-27

NOTE: 1. ALL CL OF SANITARY & STORM SEWER LINES "AS-BUILT" SHALL CONSTITUTE THE CL OF DRAINAGE & UTILITY EASEMENTS AS SHOWN ON PLAT.

2. SHADED AREA ON LOTS 16, 29 - 35 IS DEDICATED AS A CONSERVATION EASEMENT; THE FOLLOWING ACTIVITIES ARE PROHIBITED WITHIN THIS EASEMENT; STRUCTURES OF ANY KIND, REMOVAL OF VEGETATION, SOIL DISTURBANCE OF ANY KIND; SEE DEED OF EASEMENT, REEDBOOK _____, PAGE _____ FOR FURTHER INFORMATION.

NOTE: REAR SETBACK IS WEST EDGE OF 20' UTILITY EASEMENT FOR LOTS 16, 29, 30, 31, 32, 33, 34, & 35. AREA FOR THESE LOTS ARE TO SURVEY LINES ONLY. PL IS CL OF STREAM.

N/F PIGGOTT TAX MAP # 13-1, 1-3



N/F A. G. BRADSHAW P.B. 48, PG. 12 8.32 AC

N/F PAUL M. CARRITHERS, INC TAX MAP # 23-1, 1-1

LOT 6 TAX MAP # 22-2 2-6

LOT 7A TAX MAP # 22-2 2-7A

LOT 7B TAX MAP # 22-2 2-7B

LOT 8 TAX MAP # 22-2 2-8

NOTE: LOT NUMBERS 17 & 18 ARE NOT USED.

SUBDIVISION PLAT FOR A SUBDIVISION BEING "TOANO WOODS"

LOCATED JAMES CITY COUNTY, VIRGINIA
 SCALE: 1"=100' DATE: 2/25/91
 OWNER/DEVELOPER TOANO WOODS ASSOCIATES, LIMITED PARTNERSHIP
 PREPARED BY RICHMOND ENGINEERING, INC. 1643-C MERRIMAC TRAIL WILLIAMSBURG, VIRGINIA 23185

RECORD (PLAT BOOK 24, PAGE 47)

LOGAN SYSTEMS