

LOT CURVE DATA

NO.	DELTA	RADIUS	LENGTH	TANGENT	CHORD	CHORD BEARING
1A	05°44'35"	1166.67'	116.94'	58.52'	116.89'	S23°54'45"W
1B	85°40'08"	25.00'	37.38'	23.18'	33.99'	S63°52'32"W
1C	04°45'21"	1053.11'	19.90'	9.95'	19.90'	N78°35'14"W
2A	01°04'57"	1053.11'	19.90'	9.95'	19.90'	N78°35'14"W
2B	92°11'55"	25.00'	40.23'	25.98'	36.03'	N53°01'45"W
2C	21°13'39"	400.16'	148.26'	74.99'	147.41'	N23°41'03"E
3A	03°37'34"	1166.67'	67.05'	33.53'	67.04'	S28°25'50"W
3B	10°46'08"	400.16'	75.21'	37.72'	75.10'	N39°40'56"E
4A	05°10'03"	1166.67'	105.22'	52.65'	105.19'	S32°39'38"W
4B	02°00'00"	1572.32'	54.88'	27.45'	54.88'	N44°04'00"E
5A	05°10'03"	1166.67'	107.03'	53.55'	107.22'	S37°52'41"W
5B	03°33'00"	1572.32'	97.42'	48.73'	97.40'	N41°17'30"E
6A	05°10'03"	1166.67'	107.03'	53.55'	106.99'	S43°08'23"W
6B	10°30'28"	299.22'	54.88'	27.51'	54.80'	N44°46'14"E
7A	05°12'22"	1166.67'	106.01'	53.04'	105.97'	S48°22'16"W
7B	13°51'32"	299.22'	72.38'	36.37'	72.20'	N56°57'14"W
7C	41°24'35"	50.00'	36.14'	18.90'	35.36'	N84°35'17"E
7D	48°33'54"	50.00'	42.38'	22.56'	41.12'	N81°00'37"E
8A	01°01'00"	1095.55'	19.44'	9.72'	19.44'	S53°20'25"W
8B	01°51'27"	1166.67'	37.83'	18.91'	37.82'	S51°54'11"W
8C	53°06'35"	50.00'	46.35'	24.99'	44.71'	N30°10'23"E
9A	06°16'42"	1095.55'	120.05'	60.09'	119.99'	S56°59'16"W
9B	24°42'06"	50.00'	21.56'	10.95'	21.39'	N08°43'57"W
10	57°15'57"	50.00'	49.97'	27.30'	47.92'	N49°42'58"W
11A	56°06'36"	50.00'	48.95'	26.64'	47.02'	S56°31'14"W
11B	41°24'35"	50.00'	36.14'	18.90'	35.36'	S43°10'43"W
11C	07°58'52"	349.22'	48.65'	24.36'	48.61'	S59°53'34"W
12	05°16'44"	349.22'	32.17'	16.10'	32.16'	S53°15'46"W
13	04°06'52"	349.22'	25.08'	12.54'	25.07'	S48°13'57"W
14	06°59'31"	349.22'	42.62'	21.33'	41.59'	S43°00'46"W
15A	03°38'11"	1522.32'	96.62'	48.32'	96.60'	S41°20'05"W
15B	91°58'10"	25.00'	40.13'	25.87'	35.96'	S89°08'16"W
15C	08°07'39"	883.65'	125.35'	62.78'	125.24'	N40°48'50"W
16A	41°24'35"	50.00'	36.14'	18.90'	35.36'	N16°02'43"W
16B	19°13'26"	50.00'	16.78'	8.47'	16.78'	N04°57'09"W

LOT CURVE DATA

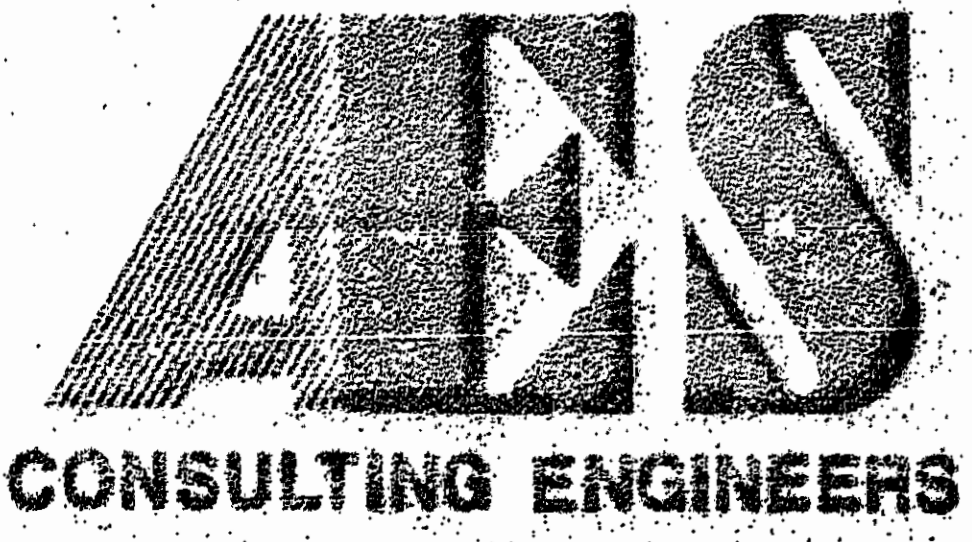
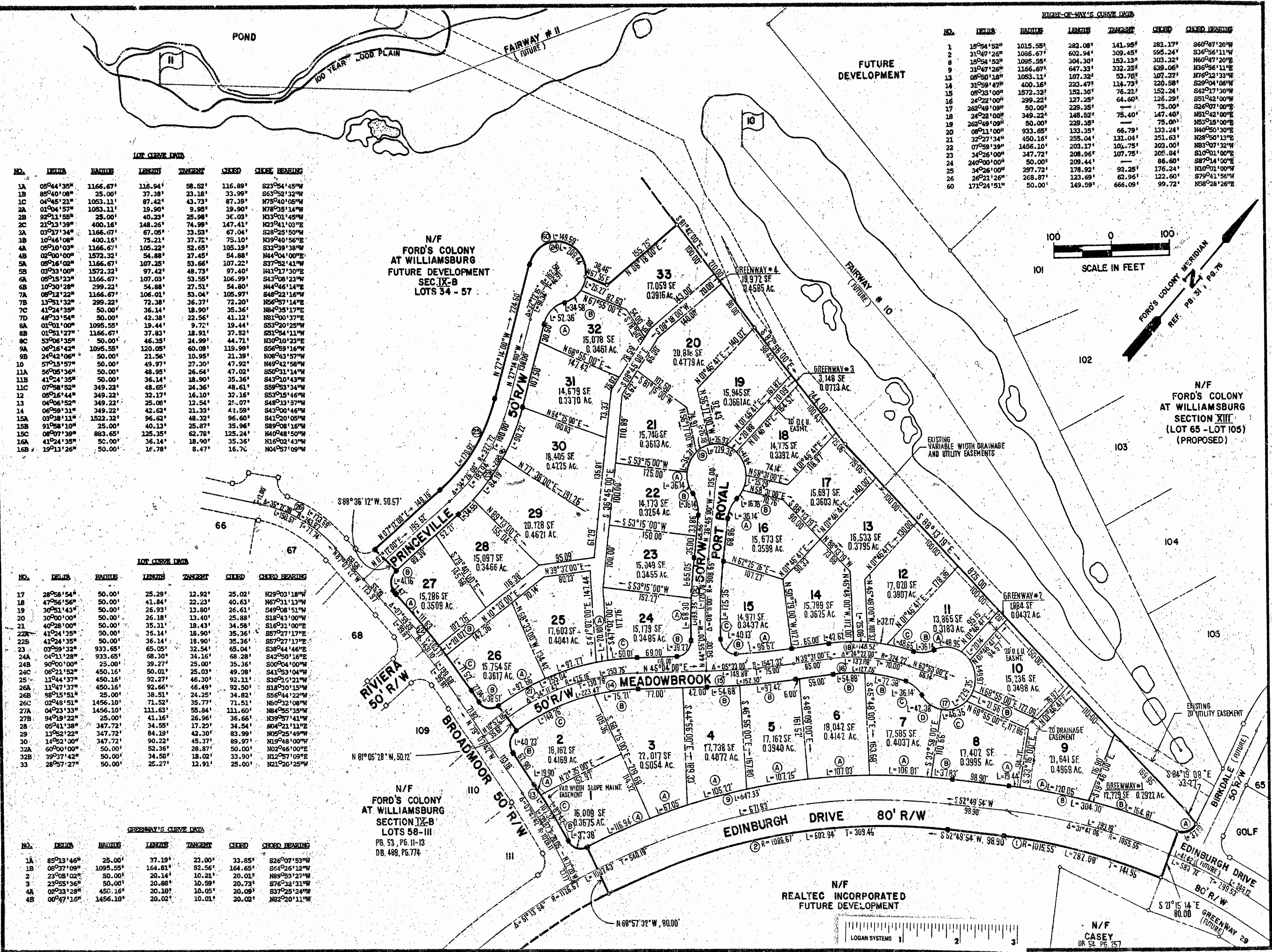
NO.	DELTA	RADIUS	LENGTH	TANGENT	CHORD	CHORD BEARING
17	28°58'54"	50.00'	25.29'	12.92'	25.02'	N29°03'18"W
18	47°56'56"	50.00'	41.84'	22.23'	40.63'	N67°31'13"W
19	30°51'43"	50.00'	26.93'	13.80'	26.61'	S49°08'51"W
20	30°00'00"	50.00'	26.18'	13.40'	25.88'	S18°43'00"W
21	40°28'00"	50.00'	35.11'	18.43'	34.58'	S16°31'00"E
22A	41°24'35"	50.00'	36.14'	18.90'	35.36'	S57°27'17"E
22B	41°24'35"	50.00'	36.14'	18.90'	35.36'	S57°27'17"E
23	03°59'32"	933.65'	65.05'	32.54'	65.04'	S38°44'46"E
24A	04°11'28"	933.65'	68.30'	34.16'	68.28'	S42°50'16"E
24B	90°00'00"	25.00'	39.27'	25.00'	35.36'	S00°04'00"W
24C	06°21'52"	450.16'	50.01'	25.03'	49.28'	S41°53'04"W
25	11°44'37"	450.16'	92.27'	46.30'	92.11'	S30°15'21"W
26A	11°44'37"	450.16'	92.66'	46.49'	92.50'	S18°01'15"W
26B	88°15'51"	25.00'	38.51'	24.25'	34.82'	S56°44'22"W
26C	02°48'51"	1456.10'	71.52'	35.77'	71.51'	N80°32'08"W
27A	04°23'33"	1456.10'	111.63'	55.84'	111.60'	N84°55'35"W
27B	94°19'22"	25.00'	41.16'	26.96'	36.66'	N39°57'41"W
28	05°41'38"	347.72'	34.55'	17.22'	34.54'	N04°21'11"E
29	13°52'22"	347.72'	84.19'	42.30'	83.99'	N05°25'49"W
30	14°52'30"	347.72'	90.22'	45.37'	89.97'	N19°48'00"W
31	60°00'00"	50.00'	52.36'	28.87'	50.00'	N02°46'00"E
32A	39°27'42"	50.00'	34.58'	18.02'	33.90'	N12°57'09"E
33	28°57'27"	50.00'	25.27'	12.91'	25.00'	N21°20'25"W

GREENWAY'S CURVE DATA

NO.	DELTA	RADIUS	LENGTH	TANGENT	CHORD	CHORD BEARING
1A	85°13'46"	25.00'	37.19'	23.00'	33.85'	S26°07'53"W
1B	06°37'09"	1095.55'	164.81'	82.56'	164.65'	S64°26'12"W
2	23°05'02"	50.00'	20.14'	10.21'	20.01'	N89°53'27"W
3	23°55'36"	50.00'	20.88'	10.59'	20.73'	S76°32'31"W
4A	02°33'28"	450.16'	20.10'	10.05'	20.09'	S37°25'24"W
4B	00°47'16"	1456.10'	20.02'	10.01'	20.02'	N82°20'11"W

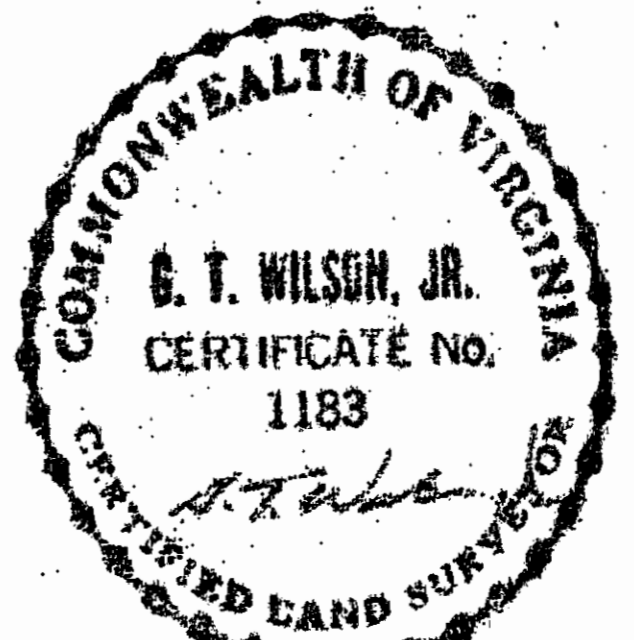
RIGHT-OF-WAY'S CURVE DATA

NO.	DELTA	RADIUS	LENGTH	TANGENT	CHORD	CHORD BEARING
1	15°54'52"	1015.55'	282.08'	141.98'	281.17'	S60°47'20"W
2	31°47'26"	1086.67'	602.94'	309.45'	595.24'	S36°56'11"W
3	15°54'52"	1095.55'	304.30'	153.13'	303.32'	N60°47'20"E
4	31°47'26"	1166.67'	647.33'	332.33'	639.06'	N36°56'11"E
5	05°50'18"	1053.11'	107.32'	53.76'	107.27'	N76°12'33"W
6	31°59'47"	400.16'	223.47'	114.73'	220.58'	S29°04'08"W
7	05°33'00"	1572.32'	152.30'	76.23'	152.24'	S42°17'30"W
8	24°22'00"	299.22'	127.25'	64.60'	126.29'	S51°42'00"W
9	262°49'10"	50.00'	229.35'	—	75.00'	S26°07'00"W
10	24°22'00"	349.22'	148.52'	75.40'	147.40'	N51°42'00"E
11	262°49'10"	50.00'	229.35'	—	75.00'	N53°15'00"E
12	08°11'00"	933.65'	133.35'	66.79'	133.24'	N40°50'30"E
13	32°27'34"	450.16'	255.04'	131.04'	251.63'	N28°50'13"E
14	07°59'39"	1456.10'	203.17'	104.75'	203.00'	N83°07'32"E
15	34°26'00"	347.72'	208.96'	107.75'	205.84'	S10°01'00"E
16	240°00'00"	50.00'	209.44'	—	86.60'	S87°14'00"E
17	34°26'00"	297.72'	178.92'	92.25'	176.24'	N10°01'00"W
18	26°21'26"	268.87'	123.69'	62.96'	122.60'	S79°41'56"W
19	171°24'51"	50.00'	149.59'	666.09'	99.72'	N58°28'26"E



5248 Olde Towne Road, Suite 1  
Williamsburg, Virginia 23188  
(804) 253-0040  
Fax (804) 220-8994

**PLAT OF**  
**FORD'S COLONY**  
**@ WILLIAMSBURG**  
**SECTION IX-B, LOT 1 - LOT 33**  
BERKELEY DISTRICT      JAMES CITY COUNTY      VIRGINIA



NO.	DATE	REVISION / COMMENT / NOTE	BY

Designed LCA/AES	Drawn BB
Scale 1"=100'	Date JULY 1991
Project No. 5652	
Drawing No. 2 of 2	