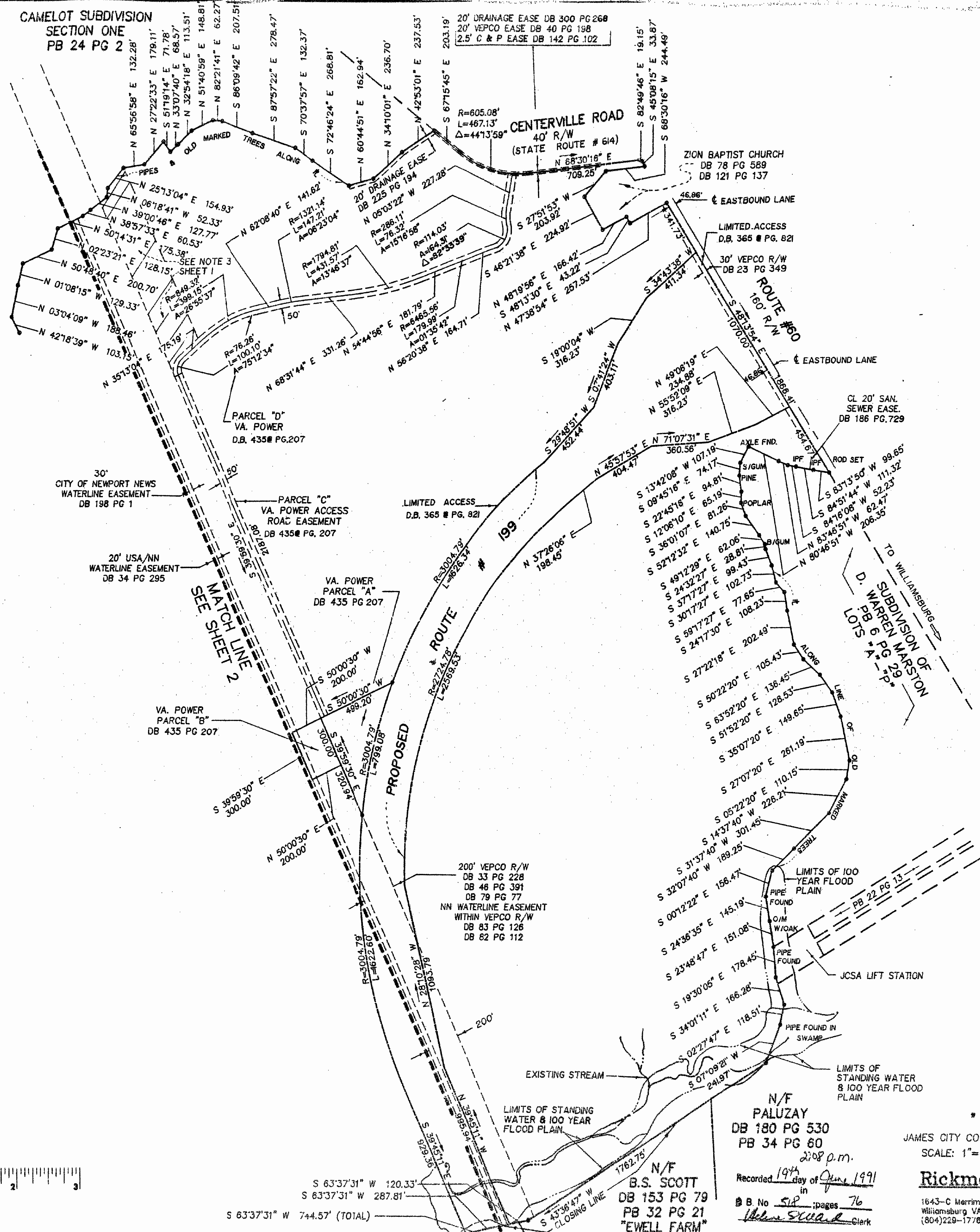


CAMELOT SUBDIVISION SECTION ONE PB 24 PG 2

CAMELOT SUBDIVISION SECTION TWO PB 25 PG 29

MERIDIAN PER VDOT PROJECT # 0199-047-103



S 63°37'31" W 120.33'
S 63°37'31" W 287.81'
S 63°37'31" W 744.57' (TOTAL)

N/F B.S. SCOTT DB 153 PG 79 PB 32 PG 21 "EWELL FARM"

N/F PALUZAY DB 180 PG 530 PB 34 PG 60
2:08 p.m.
Recorded 19th day of June, 1991
in
B No 518 pages 76
H. S. Ward Clerk

BOUNDARY SURVEY OF
'WARHILL TRACT'
JAMES CITY COUNTY BERKELEY DISTRICT VIRGINIA
SCALE: 1"=400' 5/13/91
Rickmond Engineering, Inc.
1643-C Merrimac Trail Williamsburg, VA 23185 (804)229-1776 or 898-4149
Civil Engineering Environmental Engineering Land Surveying SHEET 3