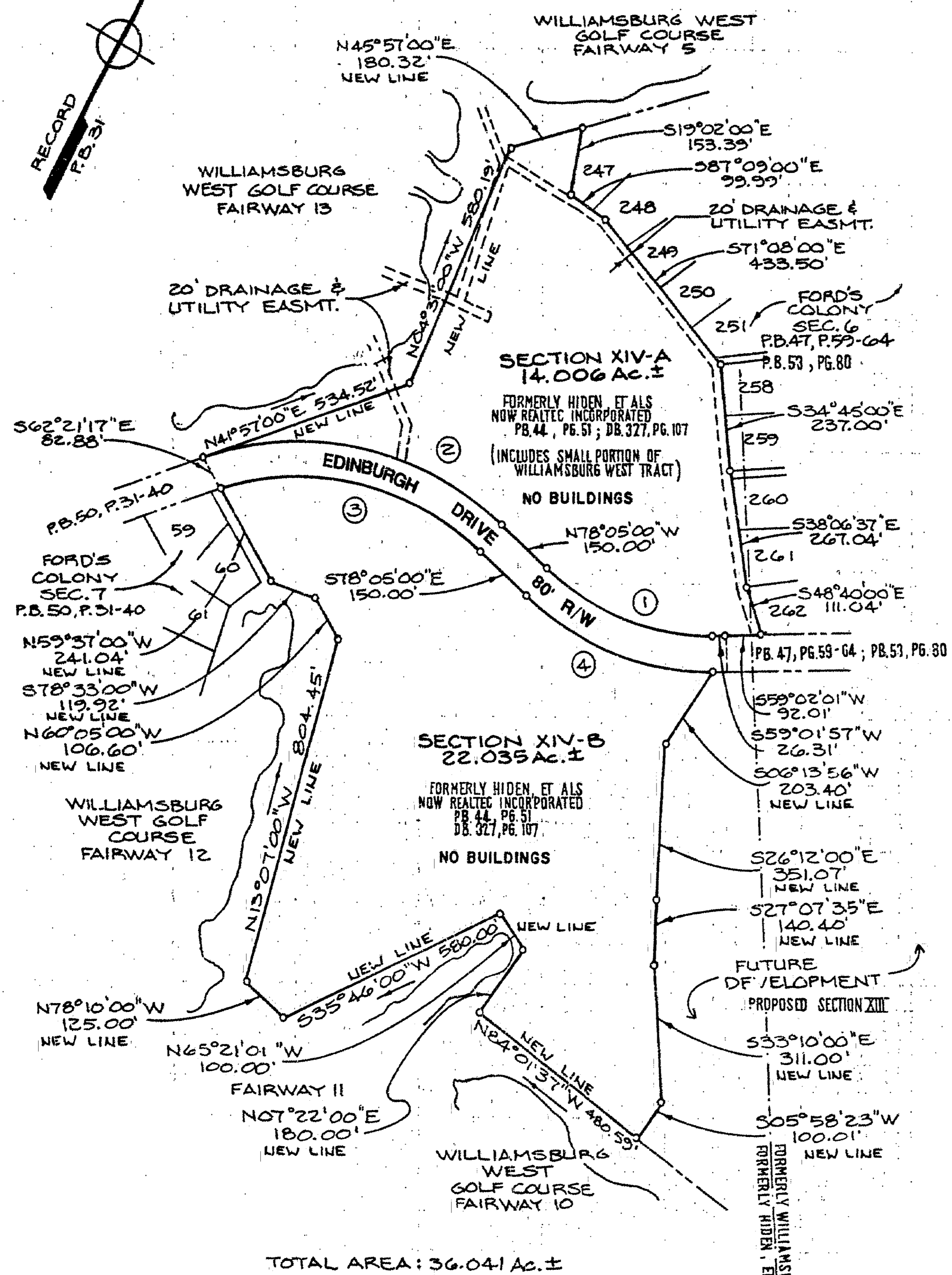
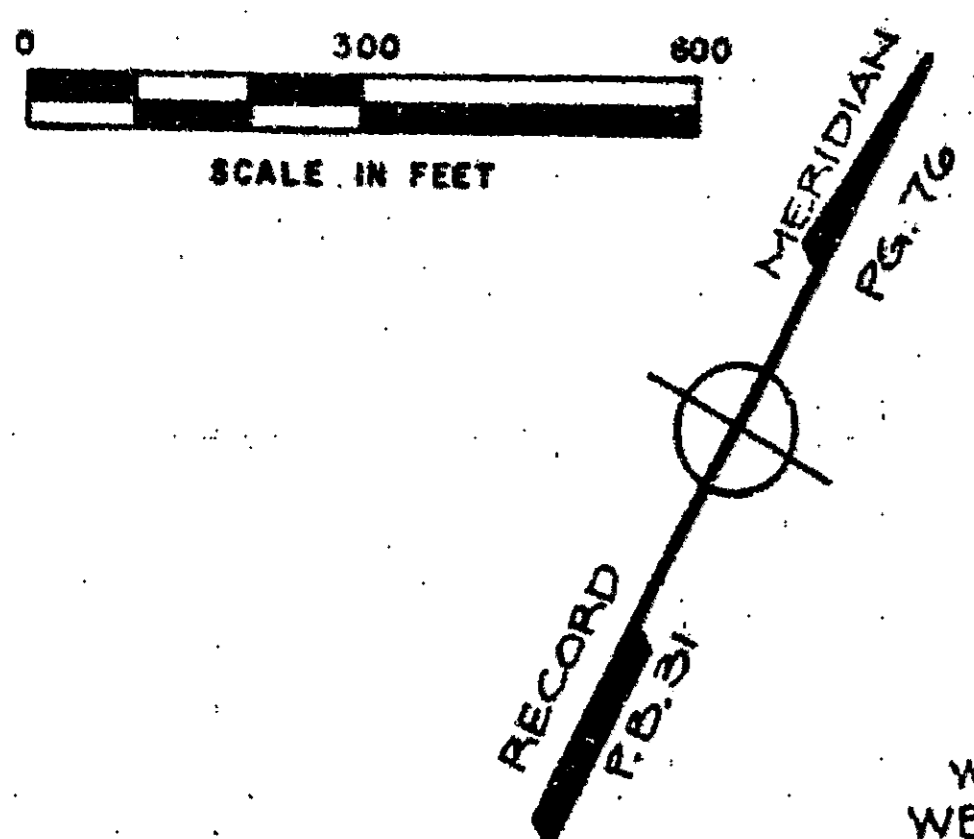


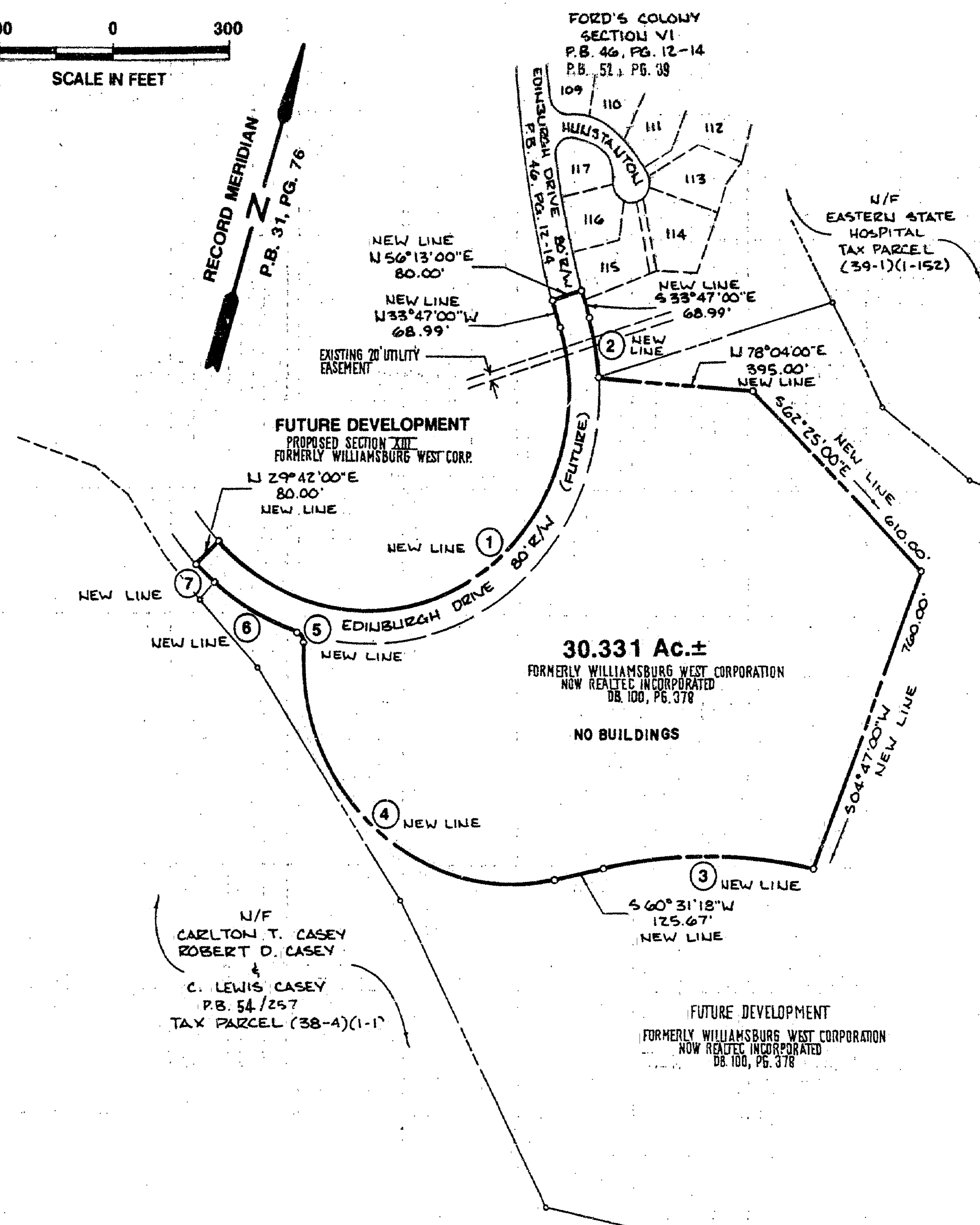
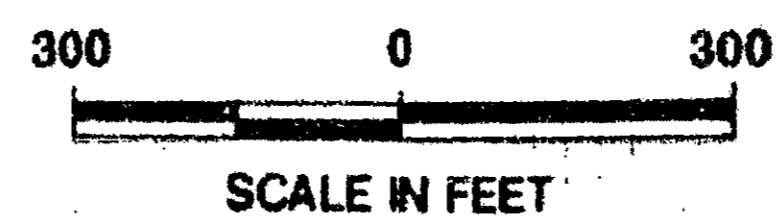
CURVE DATA

| NO. | Δ | RADIUS | LENGTH | TAN | CHORD | C. BEARING |
|-----|-----------|---------|---------|---------|---------|-------------|
| 1 | 42°52'59" | 592.06' | 443.13' | 232.52' | 432.86' | S80°28'31"W |
| 2 | 59°58'00" | 746.66' | 781.47' | 430.79' | 746.28' | S71°56'00"W |
| 3 | 58°12'23" | 666.66' | 677.25' | 371.11' | 648.50' | N72°48'49"E |
| 4 | 42°52'59" | 672.06' | 503.01' | 263.94' | 491.35' | N80°28'31"E |



**PERIMETER SURVEY OF
FORD'S COLONY @ WILLIAMSBURG
SECTIONS XIV-A (A-14a) & XIV-B (A-14b)**

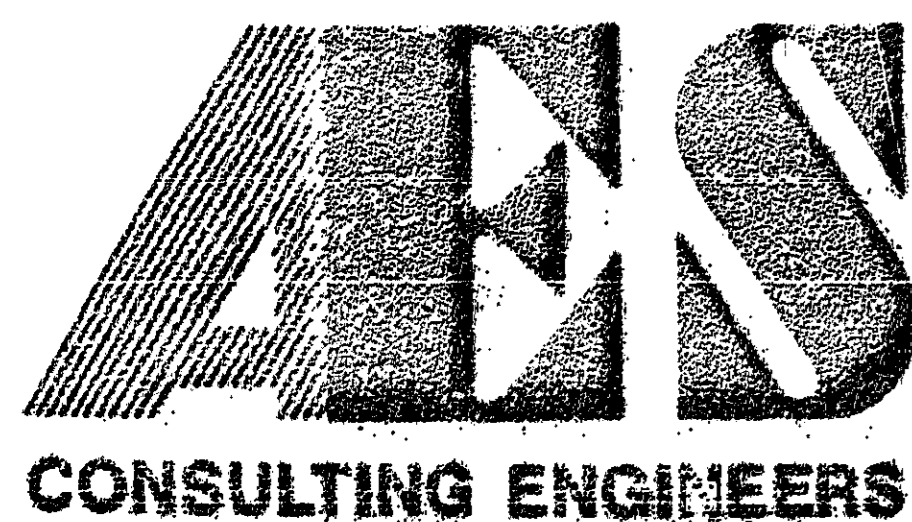
TOTAL AREA: 36.041 Ac.±



**PERIMETER SURVEY OF
FORD'S COLONY @ WILLIAMSBURG
SECTION XVI (A-16)**

CURVE TABLE

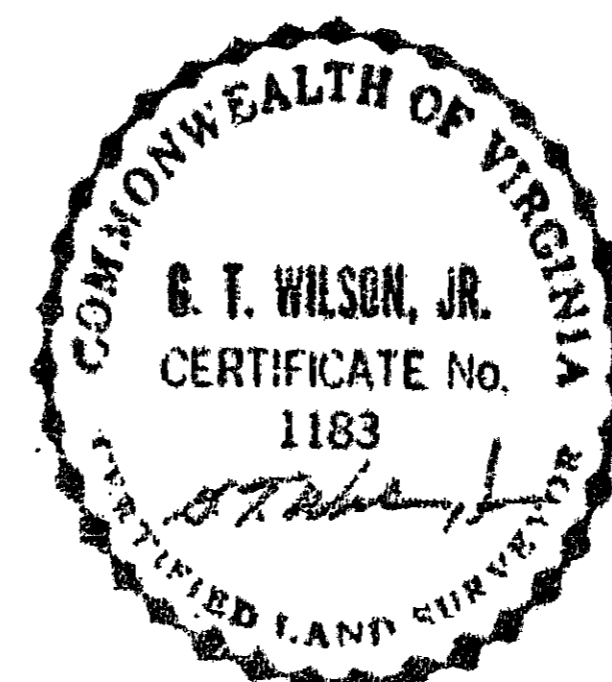
| NO. | DELTA | RADIUS | LENGTH | TANGENT | CHORD | CHORD BEARING |
|-----|------------|----------|----------|----------|----------|---------------|
| 1 | 155°28'57" | 523.69' | 1402.85' | 2222.53' | 1019.46' | N42°57'31"E |
| 2 | 1°32'15" | 603.69' | 142.65' | 71.66' | 142.32' | S27°00'47"W |
| 3 | 24°45'54" | 1258.29' | 543.87' | 275.25' | 439.65' | S72°54'15"W |
| 4 | 106°39'37" | 534.28' | 994.60' | 717.58' | 857.08' | N66°08'53"W |
| 5 | 76°52'55" | 25.00' | 33.55' | 19.84' | 31.09' | N51°51'32"W |
| 6 | 23°12'32" | 603.69' | 244.54' | 123.97' | 242.87' | N78°05'44"W |
| 7 | 6°11'27" | 603.69' | 65.23' | 32.65' | 65.20' | N63°23'44"W |



5248 Olde Towne Road, Suite 1
Williamsburg, Virginia 23188
(804) 253-0040
Fax (804) 220-8994

**PLAT SHOWING
PERIMETER SURVEYS OF SECTIONS XIV-A (A-14a)
SECTION XIV-B (A-14b) & SECTION XVI (A-16)
FORD'S COLONY
@ WILLIAMSBURG**

BERKELEY DISTRICT JAMES CITY COUNTY VIRGINIA



| NO. | DATE | REVISION / COMMENT / NOTE | BY |
|-----|------|---------------------------|----|
| | | | |
| | | | |
| | | | |
| | | | |

| | |
|------------------------------|-------------------|
| Designed AES | Drawn AES |
| Scale NOTED | Date APR, 1991 |
| Project No. 5652 | |
| Drawing No. 6 OF 7 | |