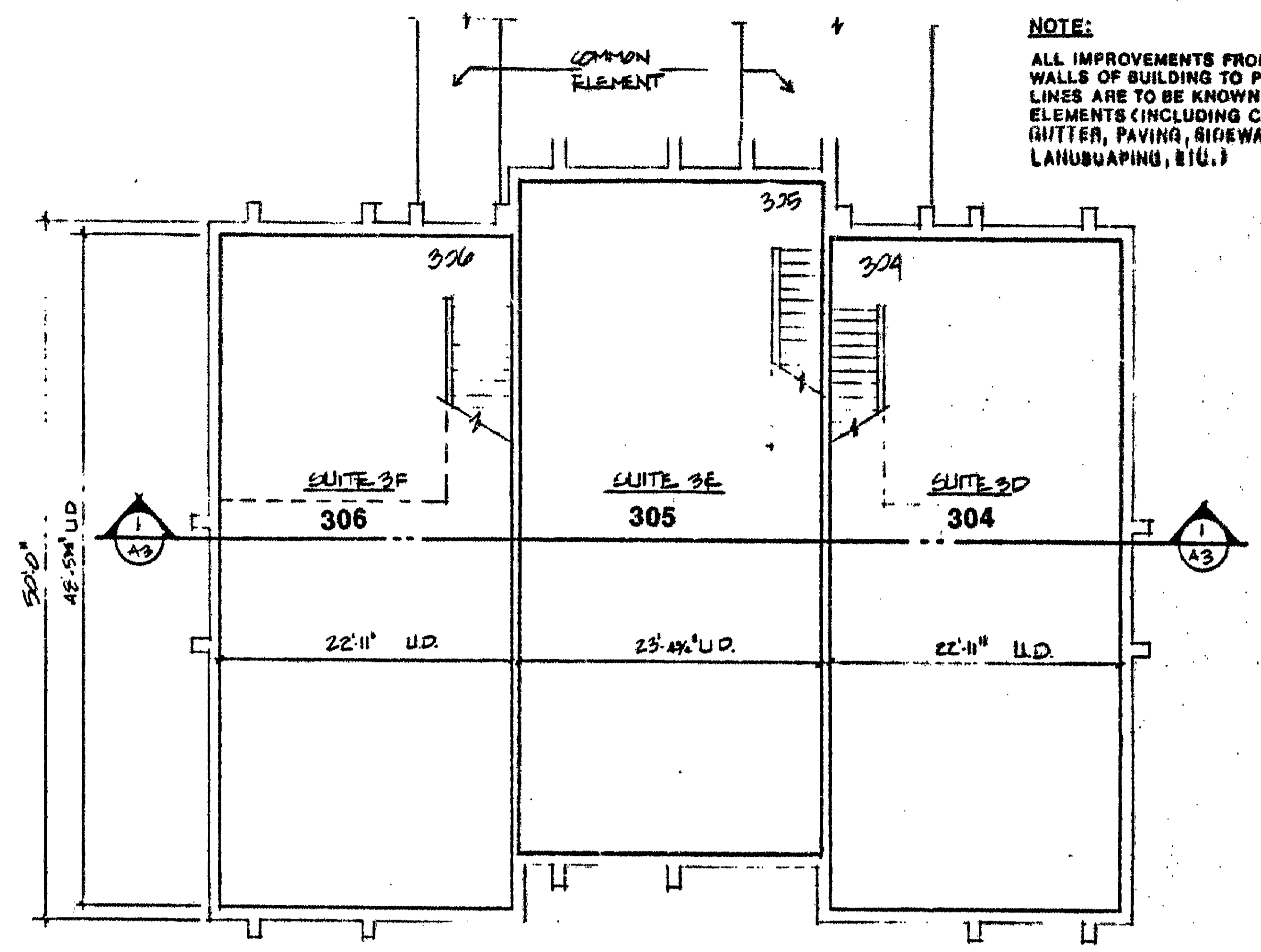
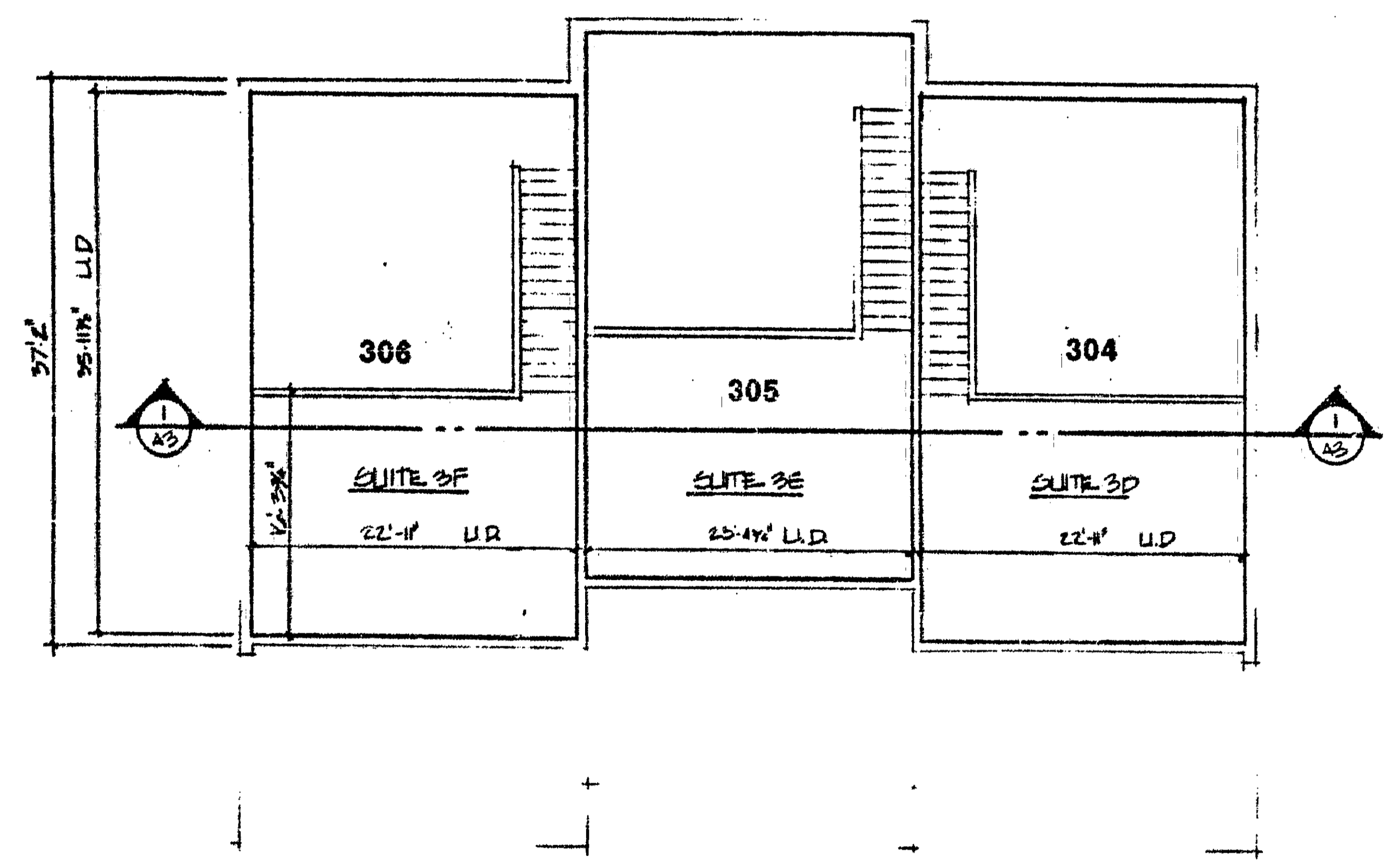


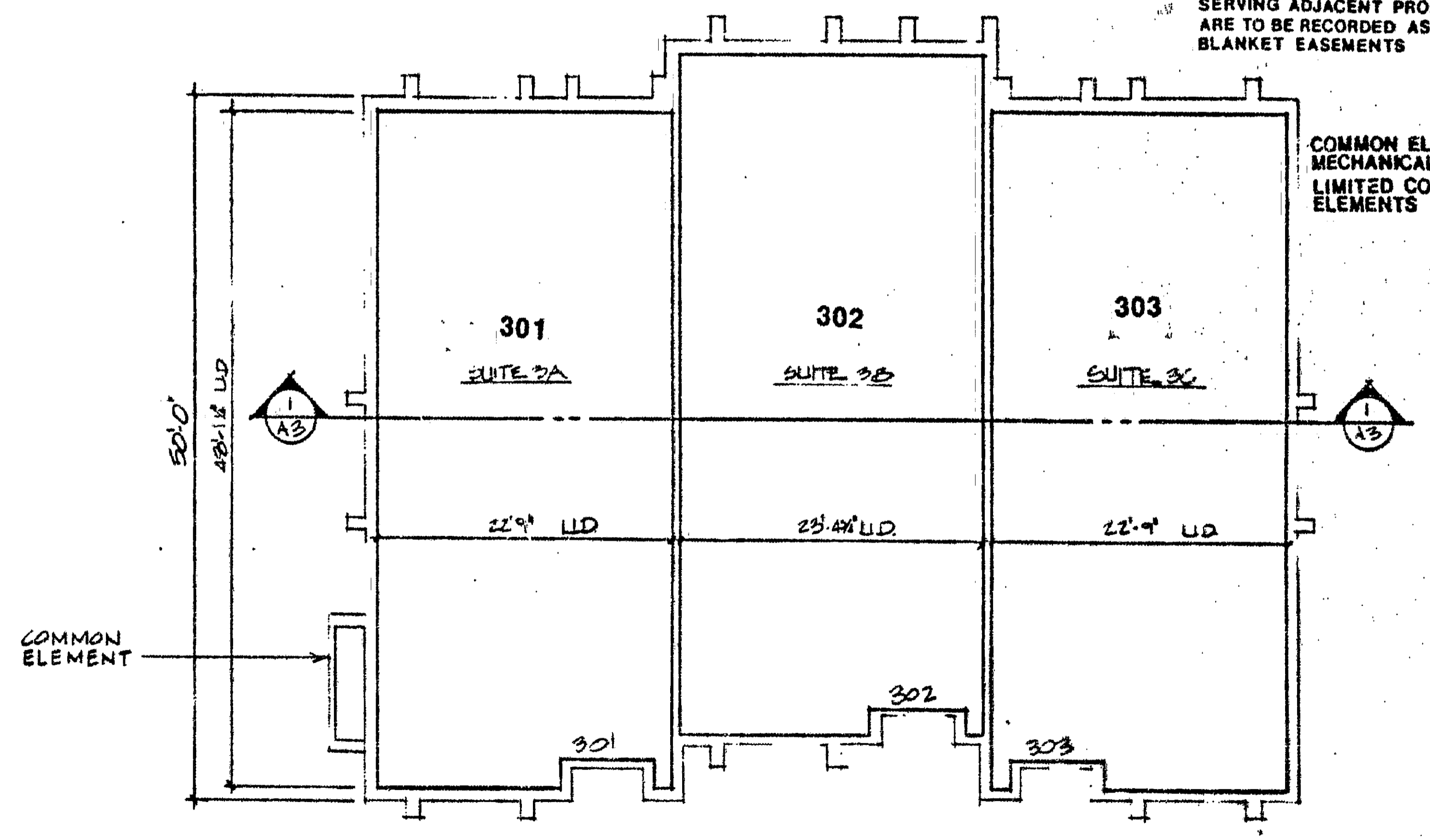
1 BUILDING SECTION
1/8" = 1'-0"



3 SECOND FLOOR PLAN
1/8" = 1'-0"



2 MEZZANINE FLOOR PLAN
1/8" = 1'-0"



4 FIRST FLOOR PLAN
1/8" = 1'-0"

NOTE:
ALL IMPROVEMENTS FROM EXTERIOR WALLS OF BUILDING TO PROPERTY LINES ARE TO BE KNOWN AS COMMON ELEMENTS (INCLUDING CURB & GUTTER, PAVING, SIDEWALKS, LANUQUAPING, ETC.)

NOTE:
ALL PAVED TRAVELWAYS & PARKING AREAS ARE TO BE RECORDED AS CROSS EASEMENTS FOR INGRESS AND EGRESS ON ADJACENT PROPERTIES

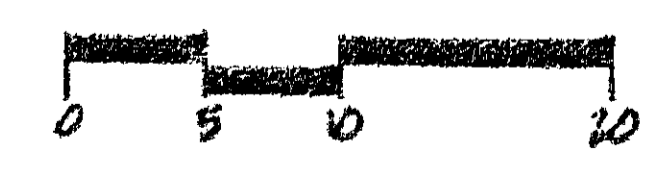
NOTE:
UNDERGROUND UTILITIES SERVING ADJACENT PROPERTIES ARE TO BE RECORDED AS BLANKET EASEMENTS

COMMON ELEMENTS MECHANICAL UNITS ARE LIMITED COMMON ELEMENTS

NOTE:
WALLS SHOWN OUTSIDE OF UNIT DIMENSIONS ARE COMMON ELEMENTS

NOTE: ALL UNIT DIMENSIONS SHOWN ARE TO FINISH SURFACE

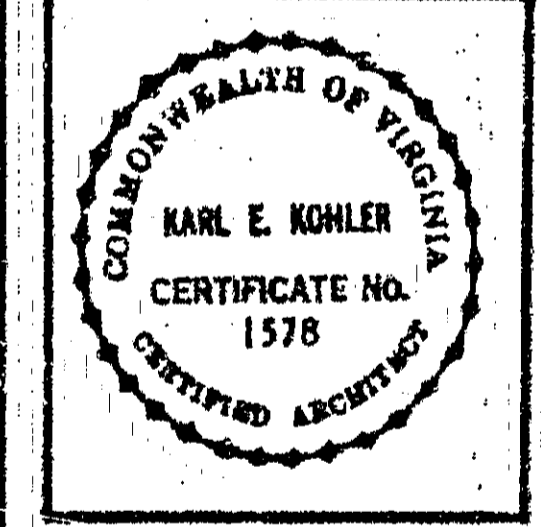
The undersigned hereby certifies that these plans are accurate and are in compliance with the provisions of Section 55-79.58 (b) of the 1950 Code of Virginia, as amended.



Karl E. Kohler Associates, Registered Architects
By: *[Signature]*
Date: 7/15/01

REVISIONS
DATE 2-22-01
COMM. NO. 8904

NORGE CENTER
JAMES CITY COUNTY, VIRGINIA
BUILDING #3



K
KARL E. KOHLER ASSOCIATES ARCHITECTS
301 MAPLE AVENUE, WEST
VIENNA, VIRGINIA 22180
PHONE: (703) 261-2370

A3