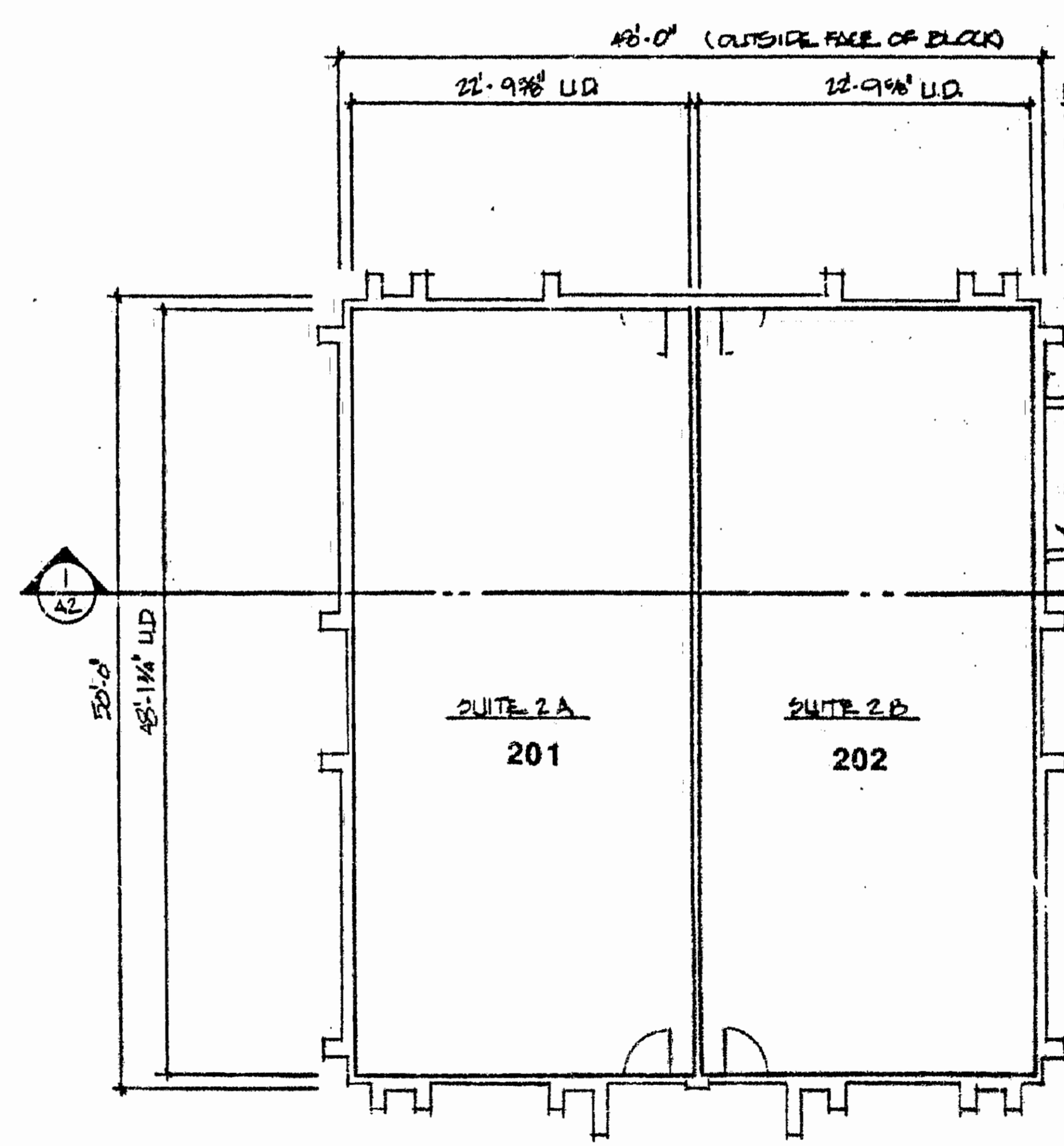


NOTE:
ALL PAVED TRAVELWAYS & PARKING AREAS ARE TO BE RECORDED AS CROSS EASEMENTS FOR INGRESS AND EGRESS ON ADJACENT PROPERTIES

BUILDING SECTION
1/8" = 1'-0"

NOTE:
ALL IMPROVEMENTS FROM EXTERIOR WALLS OF BUILDING TO PROPERTY LINES ARE TO BE KNOWN AS COMMON ELEMENTS (INCLUDING CURB & GUTTER, PAVING, SIDEWALKS, LANDSCAPING, ETC.)



NOTE:
WALLS SHOWN OUTSIDE OF UNIT DIMENSIONS ARE COMMON ELEMENTS

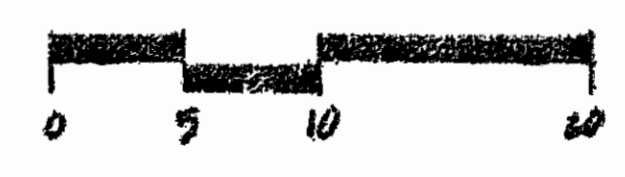
NOTE:
ALL UNIT DIMENSIONS SHOWN ARE TO FINISH SURFACE

NOTE:
UNDERGROUND UTILITIES SERVING ADJACENT PROPERTIES ARE TO BE RECORDED AS BLANKET EASEMENTS

COMMON ELEMENT

COMMON ELEMENTS MECHANICAL UNITS ARE LIMITED COMMON ELEMENTS

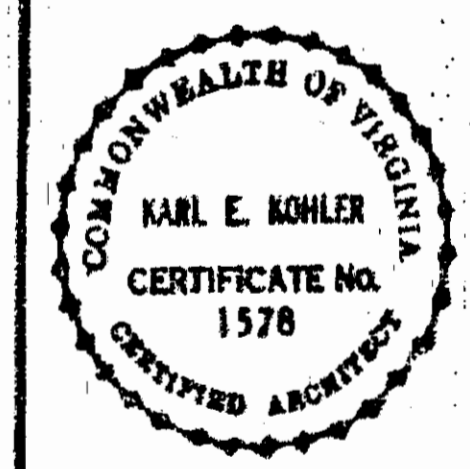
FLOOR PLAN
1/8" = 1'-0"



The undersigned hereby certifies that these plans are accurate and are in compliance with the provisions of Section 55-79.58, (b) of the 1950 Code of Virginia, as amended.

Karl E. Kohler Associates,
Registered Architects
By: *[Signature]*
Date: 3/2/91

CENTER
NORGE
 JAMES CITY COUNTY, VIRGINIA
 BUILDING #2



KARL E. KOHLER ASSOCIATES ARCHITECTS
 301 MAPLE AVENUE, WEST VIENNA, VIRGINIA 22180
 PHONE: (703) 281-7878

A2

REVISIONS
 DATE 2-22-91
 COMM. NO. 0-924
 THIS DRAWING IS THE PROPERTY OF KARL E. KOHLER ASSOCIATES, ARCHITECTS, AND IS NOT TO BE REPRODUCED OR TRANSMITTED IN ANY FORM OR BY ANY MEANS, ELECTRONIC OR MECHANICAL, WITHOUT WRITTEN PERMISSION.