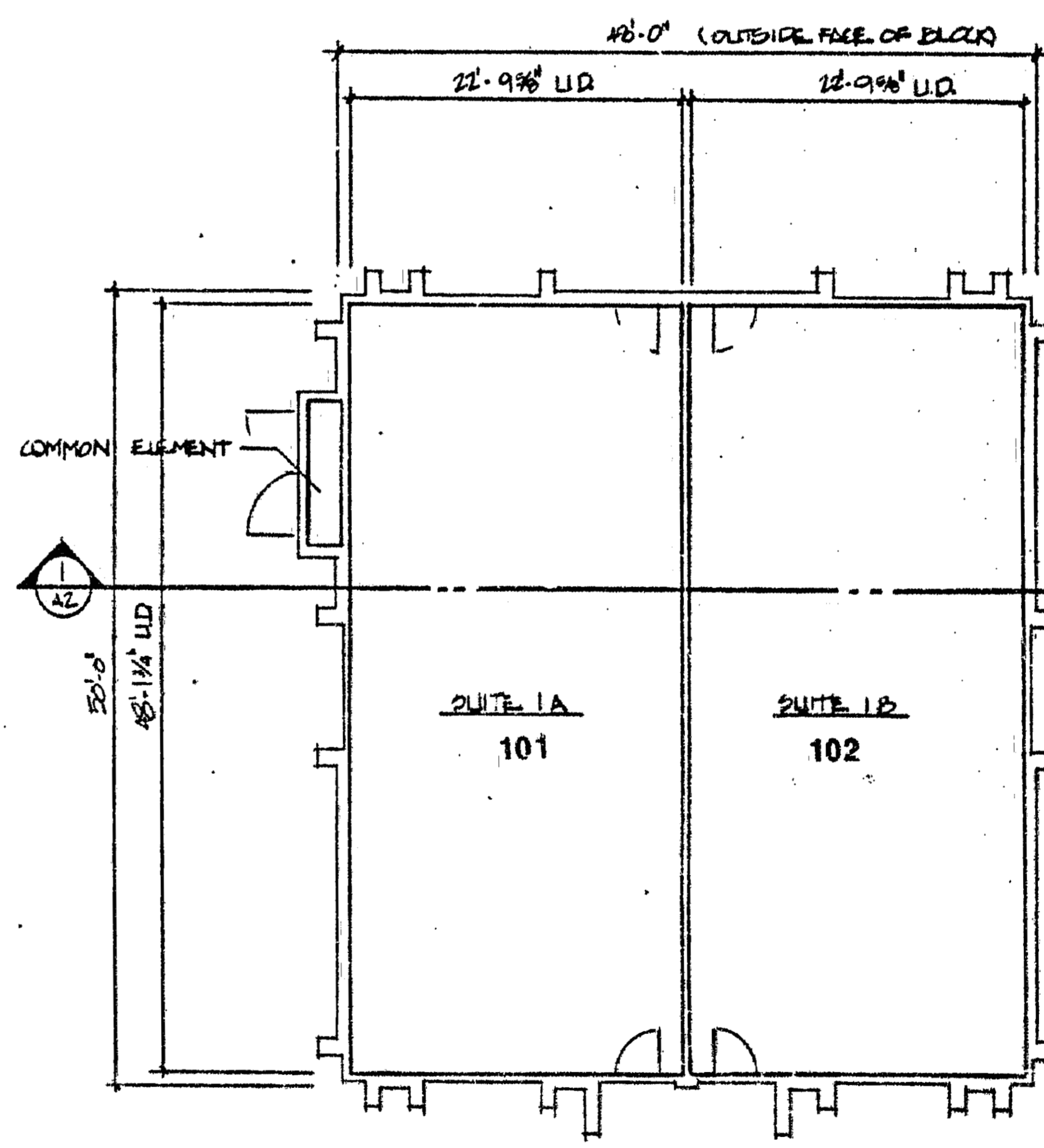


NOTE:
ALL PAVED TRAVELWAYS & PARKING AREAS ARE TO BE RECORDED AS CROSS EASEMENTS FOR INGRESS AND EGRESS ON ADJACENT PROPERTIES.

BUILDING SECTION
1
AI 1/8"=1'-0"

NOTE:
ALL IMPROVEMENTS FROM EXTERIOR WALLS OF BUILDING TO PROPERTY LINES ARE TO BE KNOWN AS COMMON ELEMENTS (INCLUDING CURB & GUTTER, PAVING, SIDEWALKS, LANDSCAPING, ETC.)



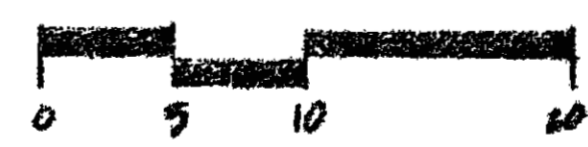
NOTE:
WALLS SHOWN OUTSIDE OF UNIT DIMENSIONS ARE COMMON ELEMENTS

NOTE:
ALL UNIT DIMENSIONS SHOWN ARE TO FINISH SURFACE

NOTE:
UNDERGROUND UTILITIES SERVING ADJACENT PROPERTIES ARE TO BE RECORDED AS BLANKET EASEMENTS

COMMON ELEMENTS MECHANICAL UNITS ARE LIMITED COMMON ELEMENTS

FLOOR PLAN
2
AI 1/8"=1'-0"



The undersigned hereby certifies that these plans are accurate and are in compliance with the provisions of Section 55-79.58 (b) of the 1950 Code of Virginia, as amended.

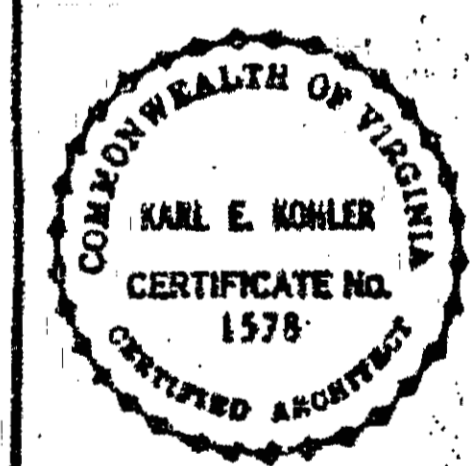
Karl E. Kohler Associates,
Registered Architects
By: *[Signature]*
Date: 8-18-91

DATE 6 APR 1990 REVISIONS

COMM. NO. 0-904

THIS DRAWING IS THE PROPERTY OF KARL E. KOHLER ASSOCIATES, ARCHITECTS, AND IS NOT TO BE REPRODUCED OR TRANSMITTED IN ANY FORM OR BY ANY MEANS, ELECTRONIC OR MECHANICAL, WITHOUT THE WRITTEN PERMISSION OF KARL E. KOHLER ASSOCIATES, ARCHITECTS.

NORGE CENTER
JAMES CITY COUNTY, VIRGINIA
BUILDING #1



KARL E. KOHLER ASSOCIATES ARCHITECTS
301 MAPLE AVENUE, WEST VIENNA, VIRGINIA 22180
PHONE: (703) 381-7570

A1