

TOANO ASSOCIATES
A VIRGINIA LIMITED PARTNERSHIP
(D.B. 289 - PG. 534)

34' INGRESS / EGRESS
EASEMENT TO ROUTE NO. 60
TOANO DRIVE

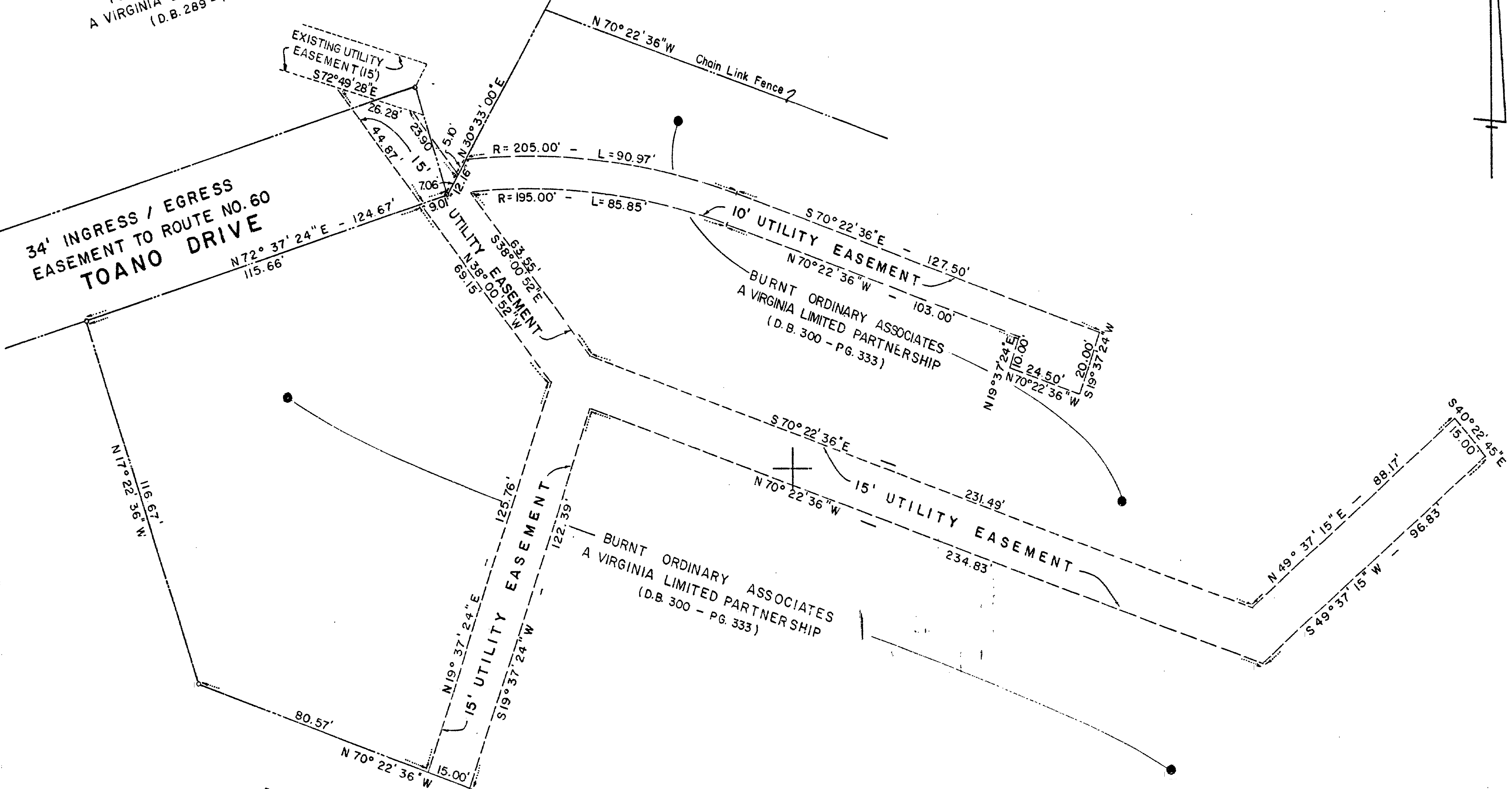
EXISTING UTILITY
EASEMENT (15')

Chain Link Fence

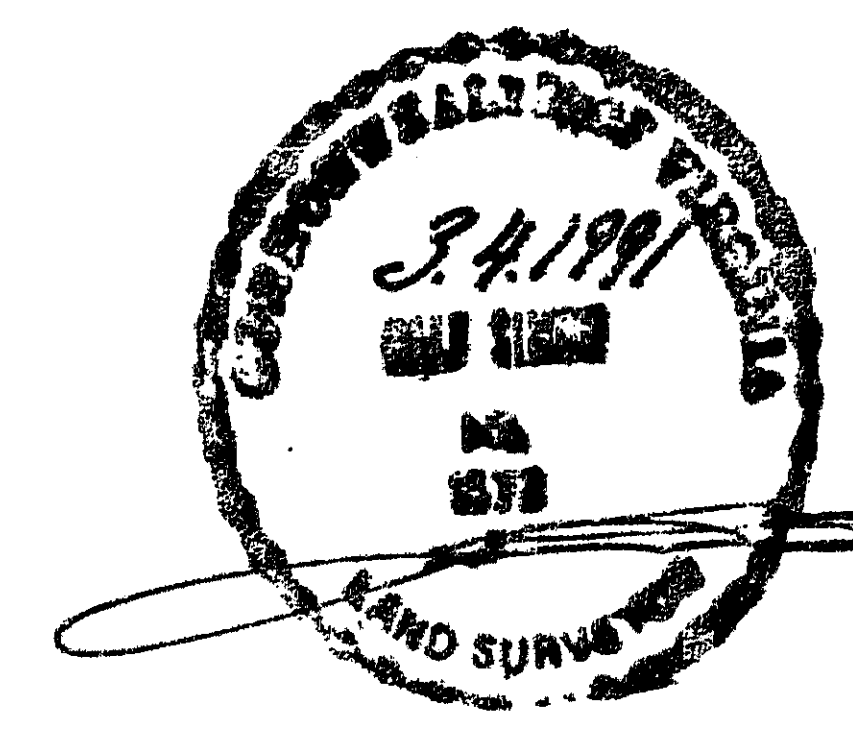
BURNT ORDINARY ASSOCIATES
A VIRGINIA LIMITED PARTNERSHIP
(D.B. 300 - PG. 333)

BURNT ORDINARY ASSOCIATES
A VIRGINIA LIMITED PARTNERSHIP
(D.B. 300 - PG. 333)

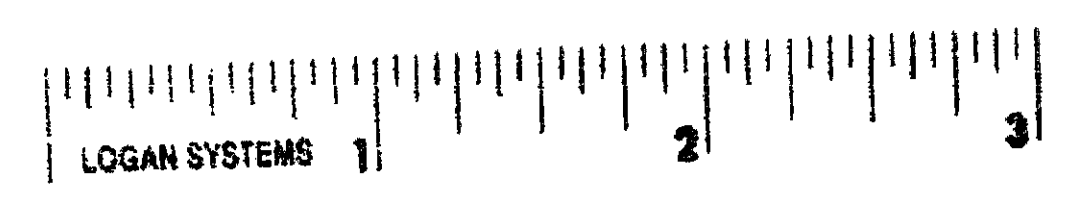
BURNT ORDINARY ASSOCIATES
A VIRGINIA LIMITED PARTNERSHIP
(D.B. 300 - PG. 333)



3:29 p.m.
Recorded 14 day of March 1991
B.F. No. 506 pages 62
Helen S. Ward Clerk
Myron R. Marts, Jr. Clerk



DRAWN BY: E.T.P.	DATE: 2/27/91	PLAT OF			
COMP BY: E.H.M.	DATE: 2/27/91	10' & 15' UTILITY EASEMENTS			
CHECKED BY: G.R.	DATE: 2/28/91	LOCATED AT			
		BURNT ORDINARY VILLAGE-PHASE III			
		TOANO	VIRGINIA		
Hassell & Folkes, P.C. Engineers Surveyors Planners Chesapeake, VA 23320 (804)547-9531	SIZE C	CONTRACT NO 88-009	DISK/BOX	FILENAME	REV.
SCALE: 1" = 25'		DATE: 2/27/91	SHEET 1 of 1		



A 1001