

NOTE: REFERENCE IS HEREBY EXPRESSLY MADE TO THE GENERAL NOTES, AS THEY APPEAR ON SHEET #1 OF THIS PLAT, AND THE DECLARATION OF PROTECTIVE COVENANTS FOR THE GOVERNOR'S LAND AT TWO RIVERS FOR ADDITIONAL INFORMATION, RULES AND REGULATIONS REGARDING THIS SUBDIVISION.

NOTE REGARDING BUILDING SETBACKS UNLESS OTHERWISE NOTED, BUILDING SETBACKS FOR THE LOTS SHOWN ARE AS FOLLOWS:
 FRONT: 60'
 SIDE: 15'
 REAR: 40'



GOVERNOR'S LAND AT TWO RIVERS

LOT CURVE TABLE

NO.	DELTA	RADIUS	LENGTH	TANGENT	CHORD	CHORD BEARING
7	28°55'52"	300.00'	151.48'	77.39'	149.88'	N64°00'56"W
8	25°02'32"	300.00'	131.12'	66.62'	130.08'	S88°59'52"W
9	14°55'37"	300.00'	78.16'	39.30'	77.94'	S69°00'48"W
10	23°48'57"	300.00'	124.70'	63.26'	123.80'	S49°28'32"W
11	07°48'22"	300.00'	40.00'	20.03'	39.97'	S31°54'52"W
12	12°01'41"	300.00'	65.51'	32.89'	65.38'	S22°50'21"W
21	49°38'08"	73.00'	63.24'	33.76'	61.28'	S77°06'11"W
22	35°31'02"	73.00'	45.25'	23.38'	44.53'	N09°58'57"W
23A	44°43'32"	73.00'	56.92'	30.00'	55.49'	N50°04'44"W
23B	90°00'00"	23.00'	36.13'	23.00'	32.53'	N27°28'00"W
24	41°21'23"	250.00'	180.45'	94.36'	176.56'	N38°15'41"E
25	49°46'17"	250.00'	214.26'	114.21'	207.76'	N83°29'31"E

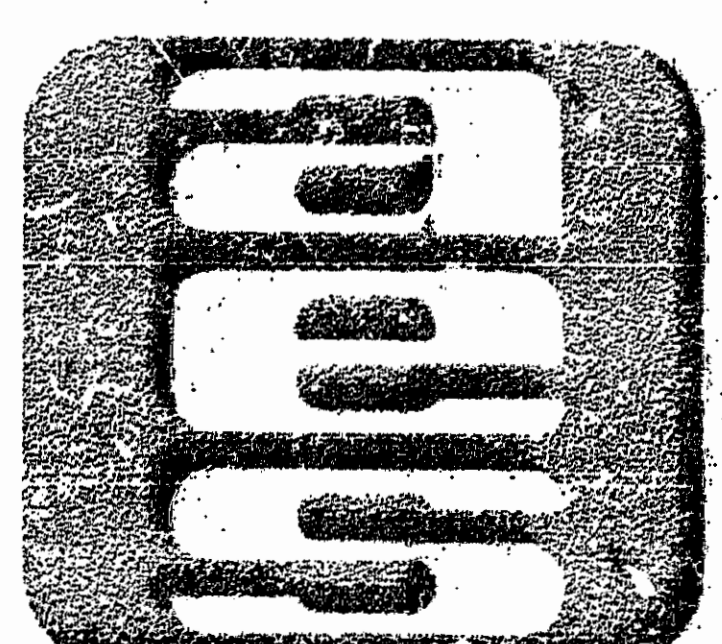
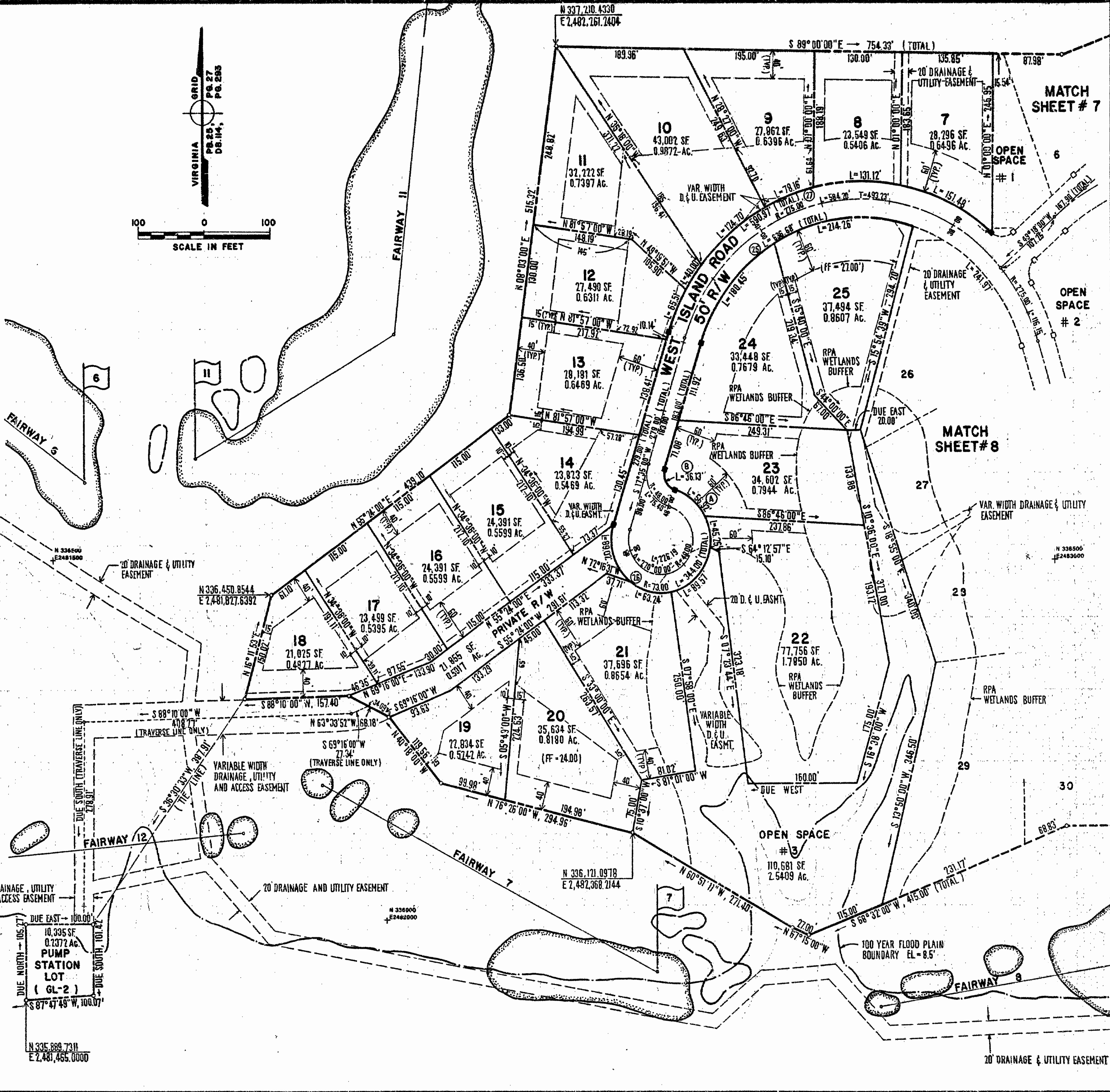
GOVERNOR'S LAND AT TWO RIVERS

NOTES OF-OF-OF CURVE TABLE

NO.	DELTA	RADIUS	LENGTH	TANGENT	CHORD	CHORD BEARING
25	145°55'00"	250.00'	636.68'	815.59'	478.05'	N89°27'30"W
26	270°00'00"	73.00'	344.00'	103.24'	303.24'	S62°35'00"W
17	112°52'00"	300.00'	590.97'	452.11'	499.95'	N74°01'00"E
PRE	69°52'07"	73.00'	89.02'	50.99'	83.61'	S17°22'04"E

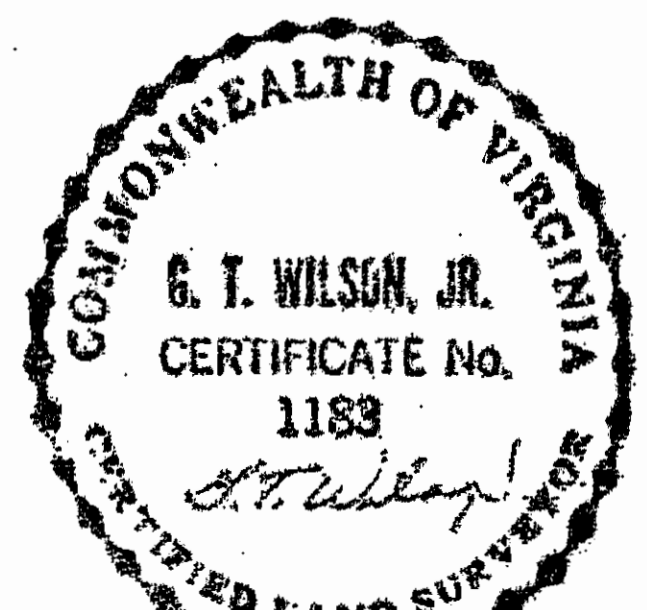
OPEN SPACE CURVE TABLE

NO.	DELTA	RADIUS	LENGTH	TANGENT	CHORD	CHORD BEARING
3	70°18'11"	73.00'	89.57'	51.40'	84.06'	N42°55'39"E



AES, a professional corporation
 5248 Old Towne Road, Suite 1
 Williamsburg, Virginia 23185
 (804) 253-0040
 Engineering, Planning, Surveying

PLAT OF SUBDIVISION
 TRAVIS POND
 THE
GOVERNOR'S LAND
At Two Rivers
 POWHATAN DISTRICT JAMES CITY COUNTY VIRGINIA



NO.	DATE	REVISION / COMMENT / NOTE	BY

Designed AES	Drawn BB
Scale 1" = 100'	Date JAN. 1991
Project No. 7173	
Drawing No. 9 of 9	