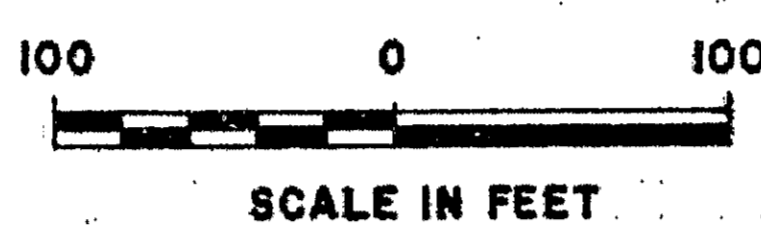
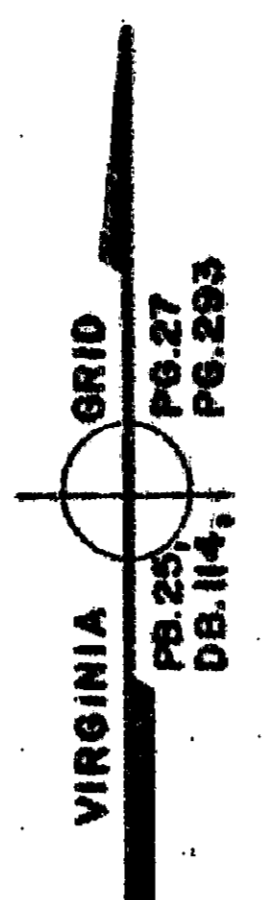
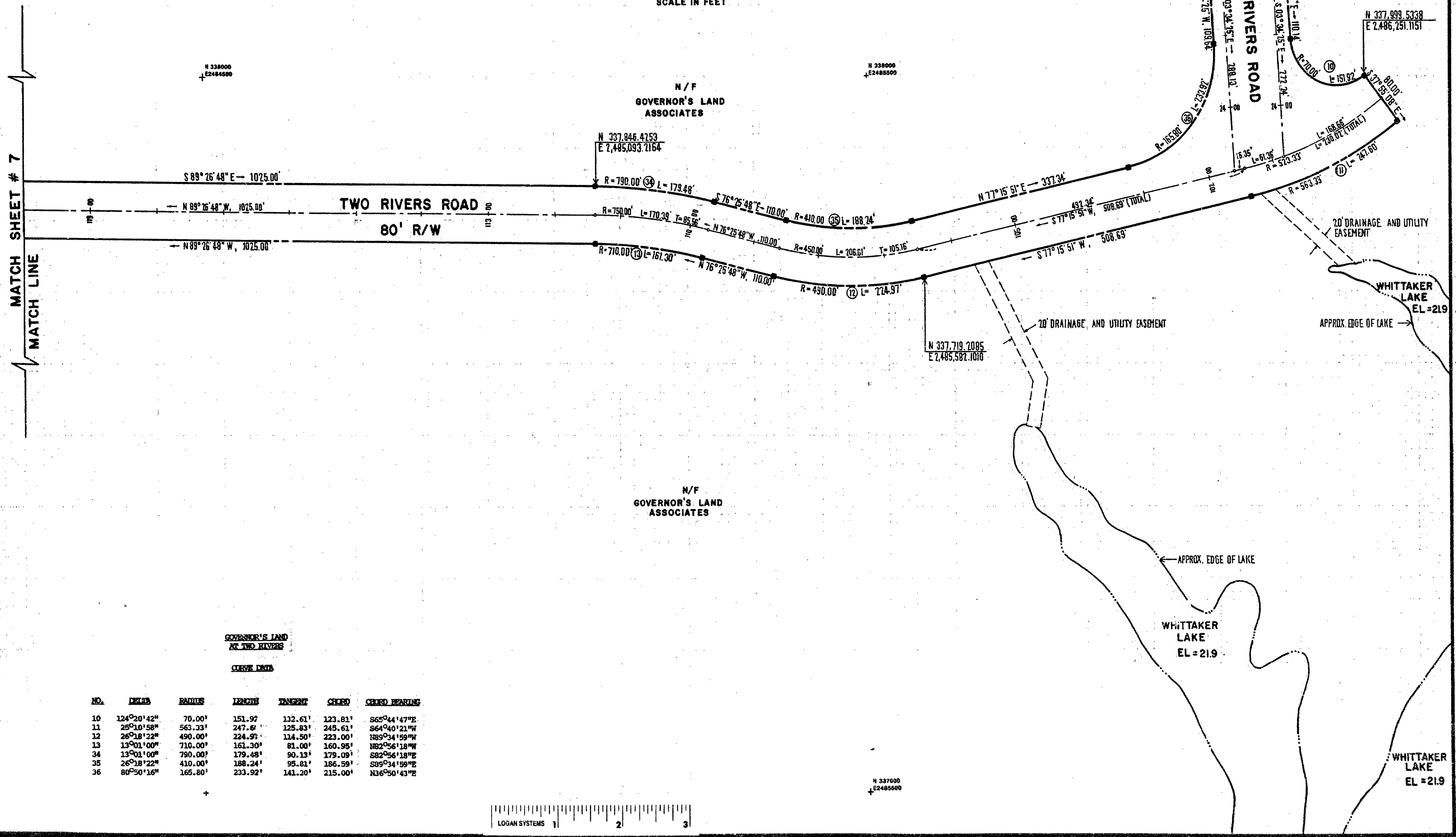


NOTE: REFERENCE IS HEREBY EXPRESSLY MADE TO THE GENERAL NOTES, AS THEY APPEAR ON SHEET #1 OF THIS PLAT, AND THE DECLARATION OF PROTECTIVE COVENANTS FOR THE GOVERNOR'S LAND AT TWO RIVERS FOR ADDITIONAL INFORMATION, RULES AND REGULATIONS REGARDING THIS SUBDIVISION.

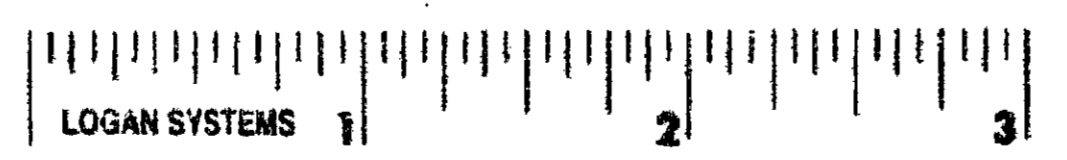


MATCH SHEET # 4



GOVERNOR'S LAND AT TWO RIVERS  
CURVE DATA

NO.	DELTA	RADIUS	LENGTH	TANGENT	CHORD	CHORD BEARING
10	124°20'42"	70.00'	151.92'	132.61'	123.81'	S65°44'14"E
11	25°10'58"	563.33'	247.6'	125.83'	245.61'	S64°40'21"W
12	26°18'22"	490.00'	224.97'	114.50'	223.00'	S85°34'59"W
13	13°01'00"	710.00'	161.30'	81.00'	160.95'	S82°56'18"W
34	13°01'00"	790.00'	179.48'	90.13'	179.09'	S82°56'18"W
35	26°18'22"	410.00'	188.24'	95.81'	186.59'	S85°34'59"W
36	80°50'16"	165.80'	233.92'	141.20'	215.00'	N36°50'43"E



**AES**, a professional corporation  
 5248 Olde Towne Road, Suite 1  
 Williamsburg, Virginia 23185  
 (804) 253-0040  
 Engineering, Planning, Surveying

PLAT OF  
 TWO RIVERS ROAD  
 THE  
**GOVERNOR'S LAND**  
*At Two Rivers*  
 POWHATAN DISTRICT JAMES CITY COUNTY VIRGINIA



No.	DATE	REVISION / COMMENT / NOTE	BY

Designed <b>AES</b>	Drawn <b>BB</b>
Scale 1" = 100'	Date JAN. 1991
Project No. <b>7173</b>	
Drawing No. <b>6 of 9</b>	