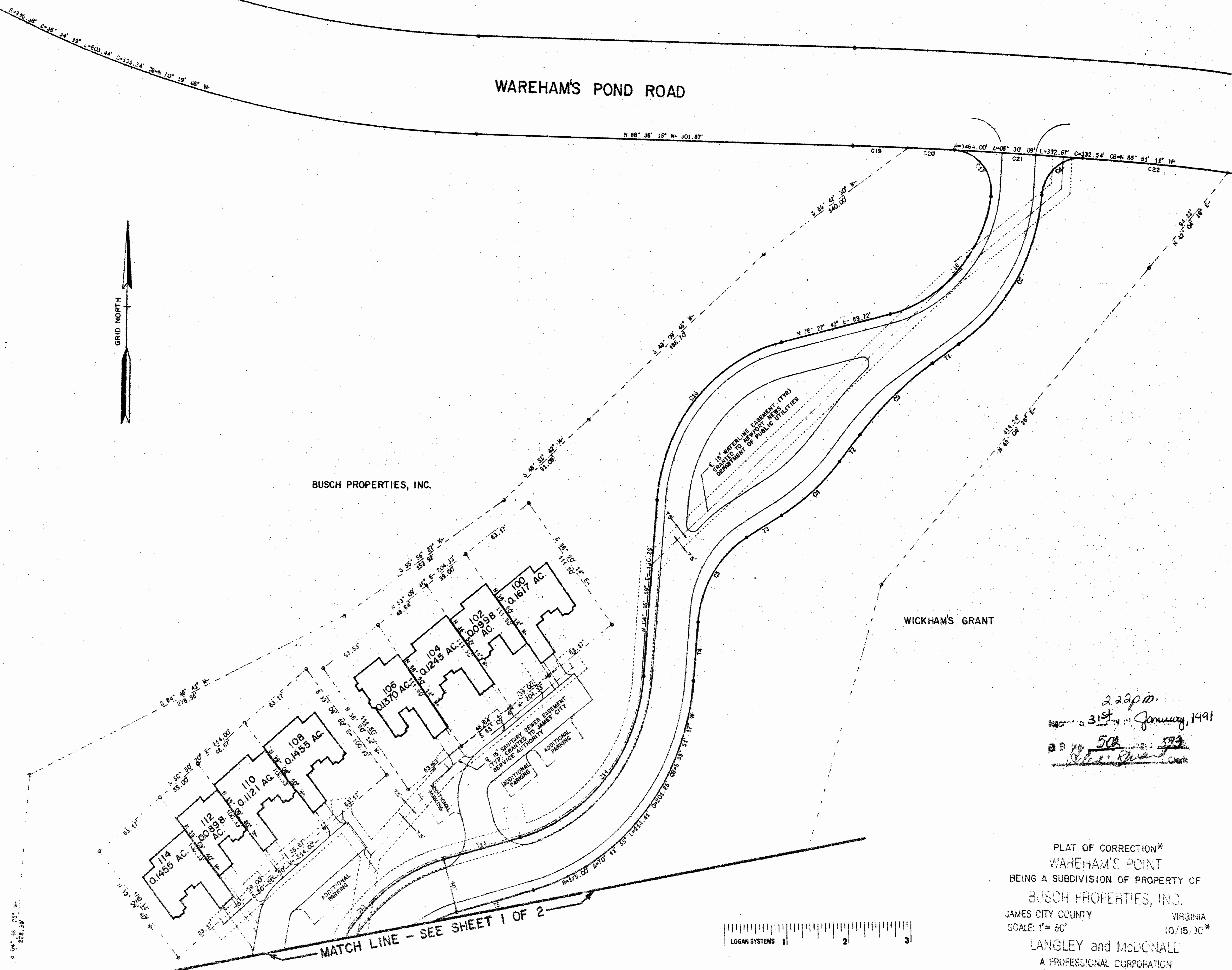


WAREHAM'S POND ROAD



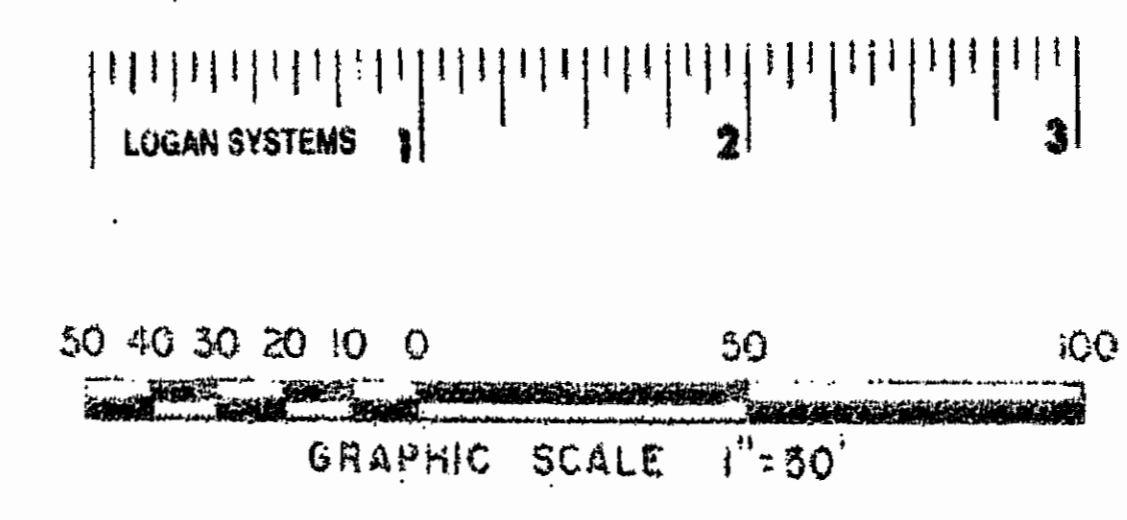
BUSCH PROPERTIES, INC.

WICKHAM'S GRANT



2:22pm
Recorded 31st of January, 1991
D.P. No. 508
Robert Edward

PLAT OF CORRECTION*
WAREHAM'S POINT
BEING A SUBDIVISION OF PROPERTY OF
BUSCH PROPERTIES, INC.
JAMES CITY COUNTY VIRGINIA
SCALE: 1"= 50' 10/15/90*
LANGLEY and McDONALD
A PROFESSIONAL CORPORATION
ENGINEERS-PLANNERS-SURVEYORS
VIRGINIA BEACH & WILLIAMSBURG, VIRGINIA



MATCH LINE - SEE SHEET 1 OF 2

*-REVISIONS MADE 10/15/90