

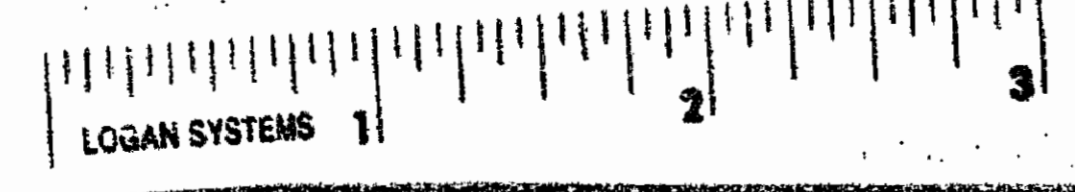
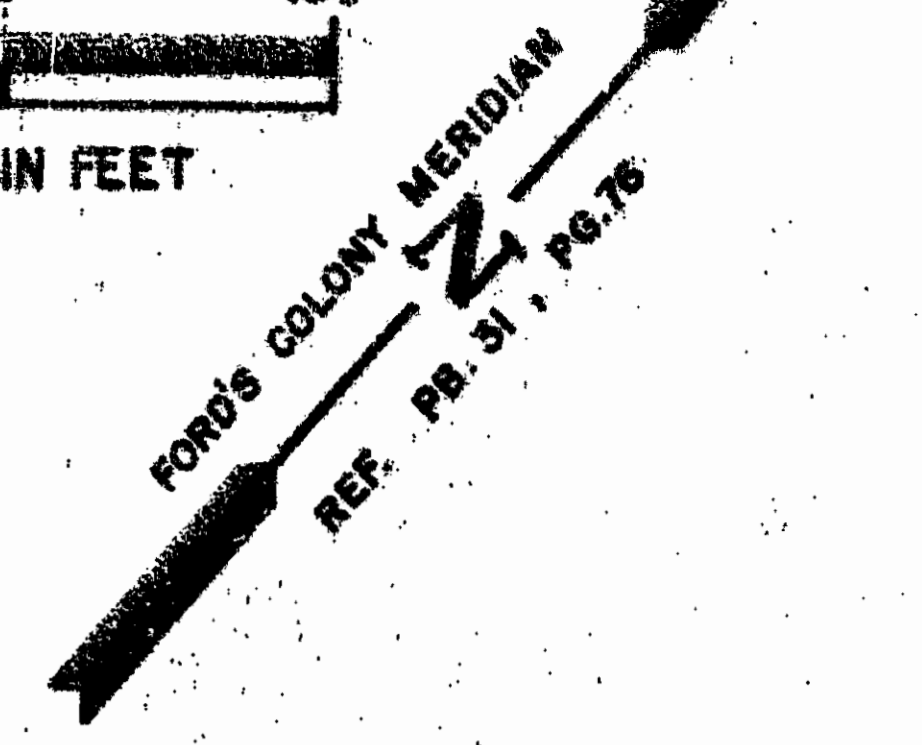
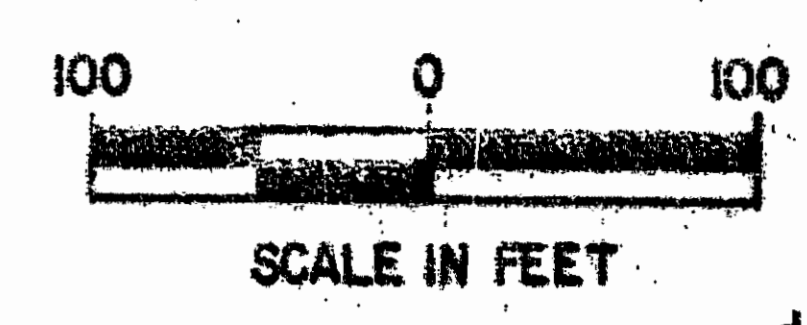
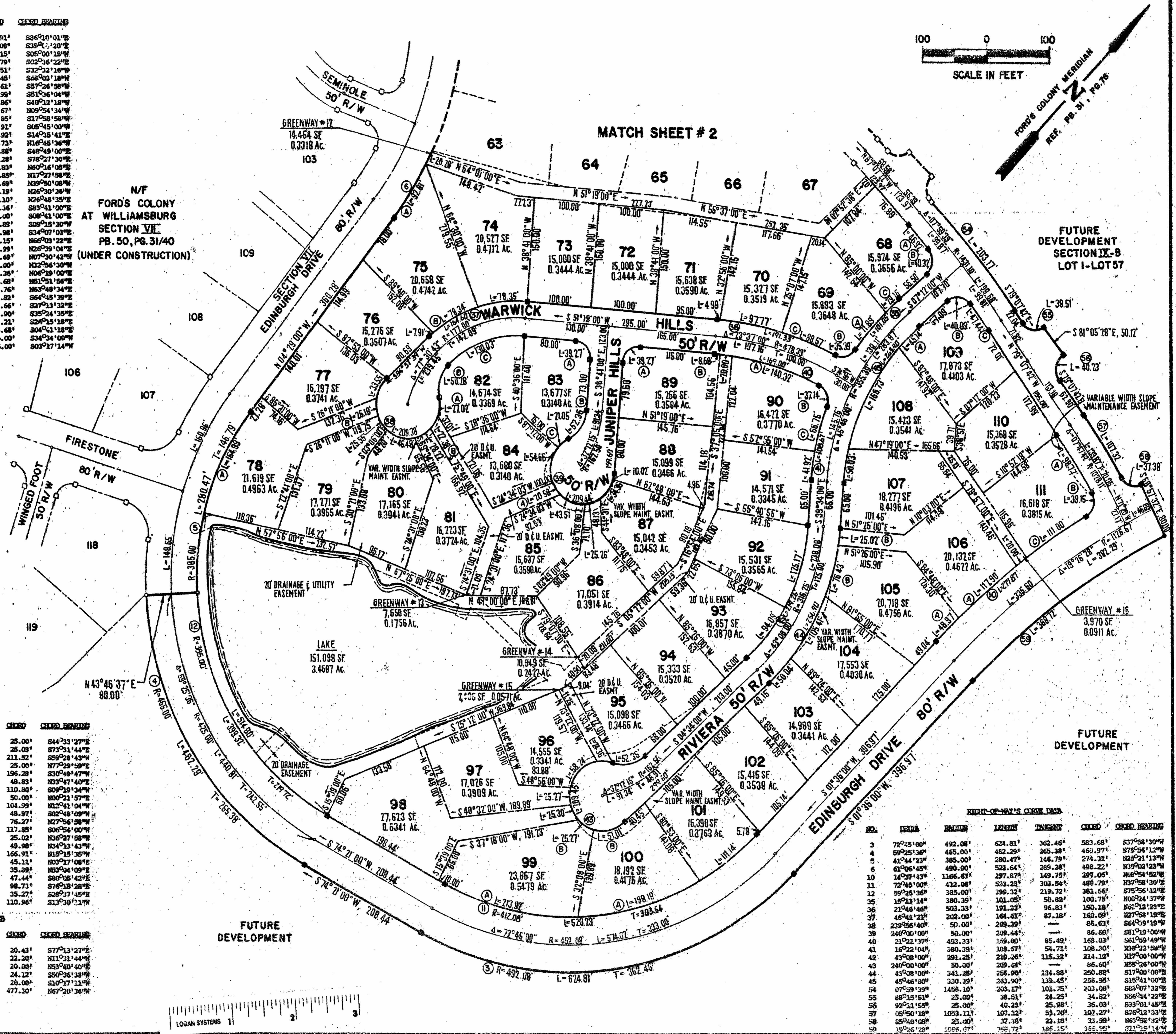
LOT CURVE DATA

Table with columns: NO., BEARING, RADIUS, LENGTH, TANGENT, CHORD, CHORD BEARING. Contains data for lots 68A through 96.

Table with columns: NO., BEARING, RADIUS, LENGTH, TANGENT, CHORD, CHORD BEARING. Contains data for lots 97 through 111C.

Table with columns: NO., BEARING, RADIUS, LENGTH, TANGENT, CHORD, CHORD BEARING. Contains data for GREENWAYS AND LAKE LOT CURVE DATA.

N/F FORDS COLONY AT WILLIAMSBURG SECTION VII, PB. 50, PG. 31/40 (UNDER CONSTRUCTION)



AES, a professional corporation. 5248 Olde Towne Road, Suite 1, Williamsburg, Virginia 23185. (804) 253-0040. Engineering, Planning, Surveying.

PLAT OF FORDS COLONY @ WILLIAMSBURG SECTION IX-B, LOT 68 - LOT 111. BERKLEY DISTRICT JAMES CITY COUNTY VIRGINIA.



Table with columns: No., DATE, REVISION / COMMENT / NOTE, BY.

Table with columns: Designed (LCA/AES), Drawn (BB), Scale (1"=100'), Date (AUG. 1990), Project No. (5652), Drawing No. (3 of 3).