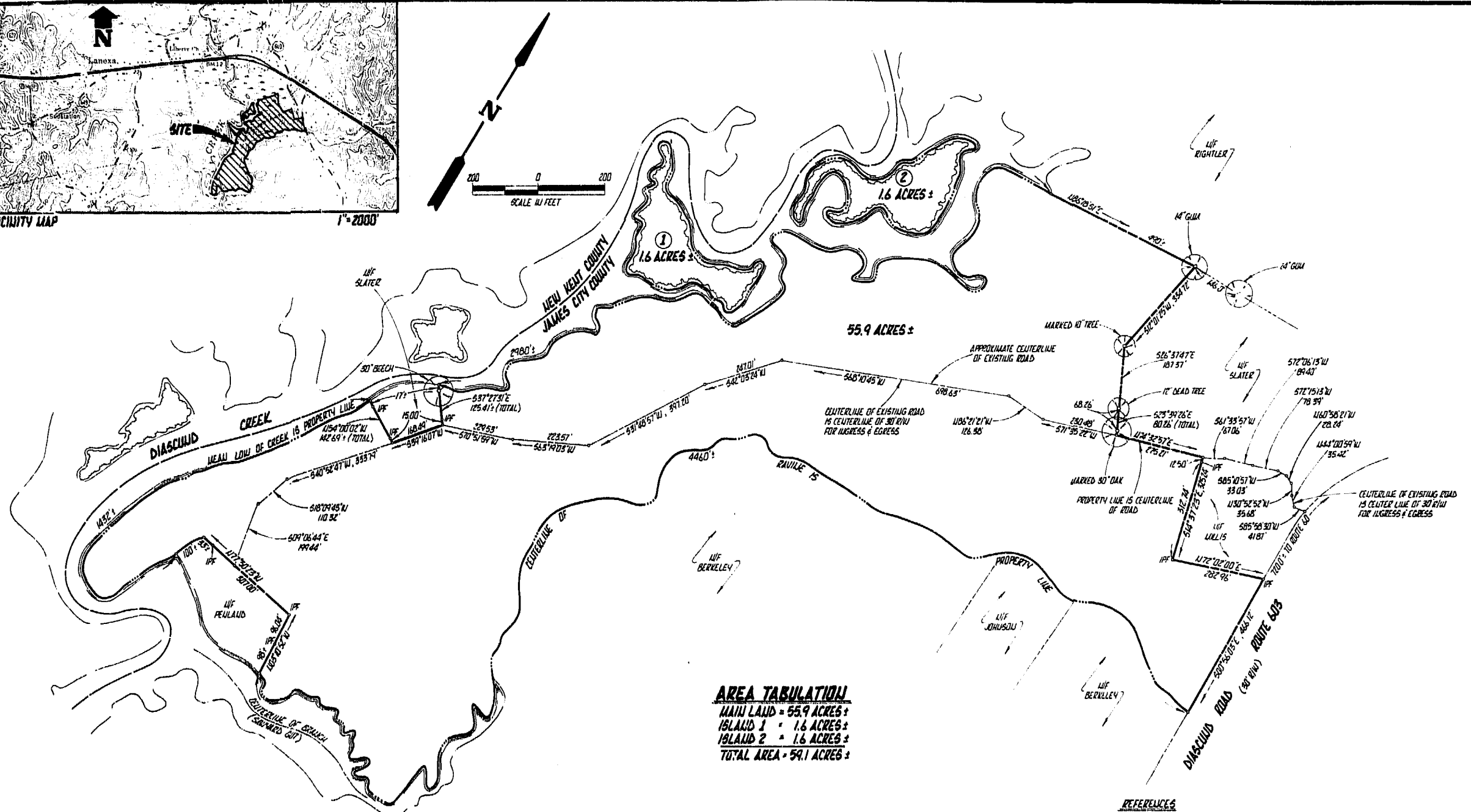
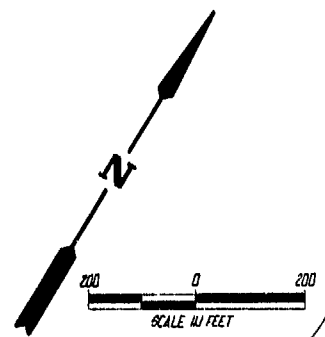


VICINITY MAP 1"=2000



AREA TABULATION
 MAIN LAND = 55.9 ACRES ±
 ISLAND 1 = 1.6 ACRES ±
 ISLAND 2 = 1.6 ACRES ±
 TOTAL AREA = 59.1 ACRES ±

REFERENCES
 DEED BOOK 140, PAGE 130
 TAX PARCEL 2-4-1-29

NOTE: This drawing is from a computerized plan and should not be used as a legal instrument.



1 OF 1	4653	<p>THE DEYOUNG-JOHNSON GROUP, INC. ENGINEERS · ARCHITECTS · SURVEYORS P.O. BOX 197 WILLIAMSBURG, VIRGINIA 23187 (804) 253-0673</p>		<p>12:34 p.m. Recorded 7th day of Sept. 1990 D.B. No. 488, pages 37 Helen Stewart Clerk</p>	<p>"DIASCULD ON THE RIVER" CONTAINING 59.1 ACRES ± FOR CONVEYANCE TO ALEX L. PEULAND</p>
DATE AUGUST 23, 1990		DESIGNED P.F.	DRAWN G.S.W.	SCALE 1"=200'	JAMES CITY COUNTY
					VIRGINIA