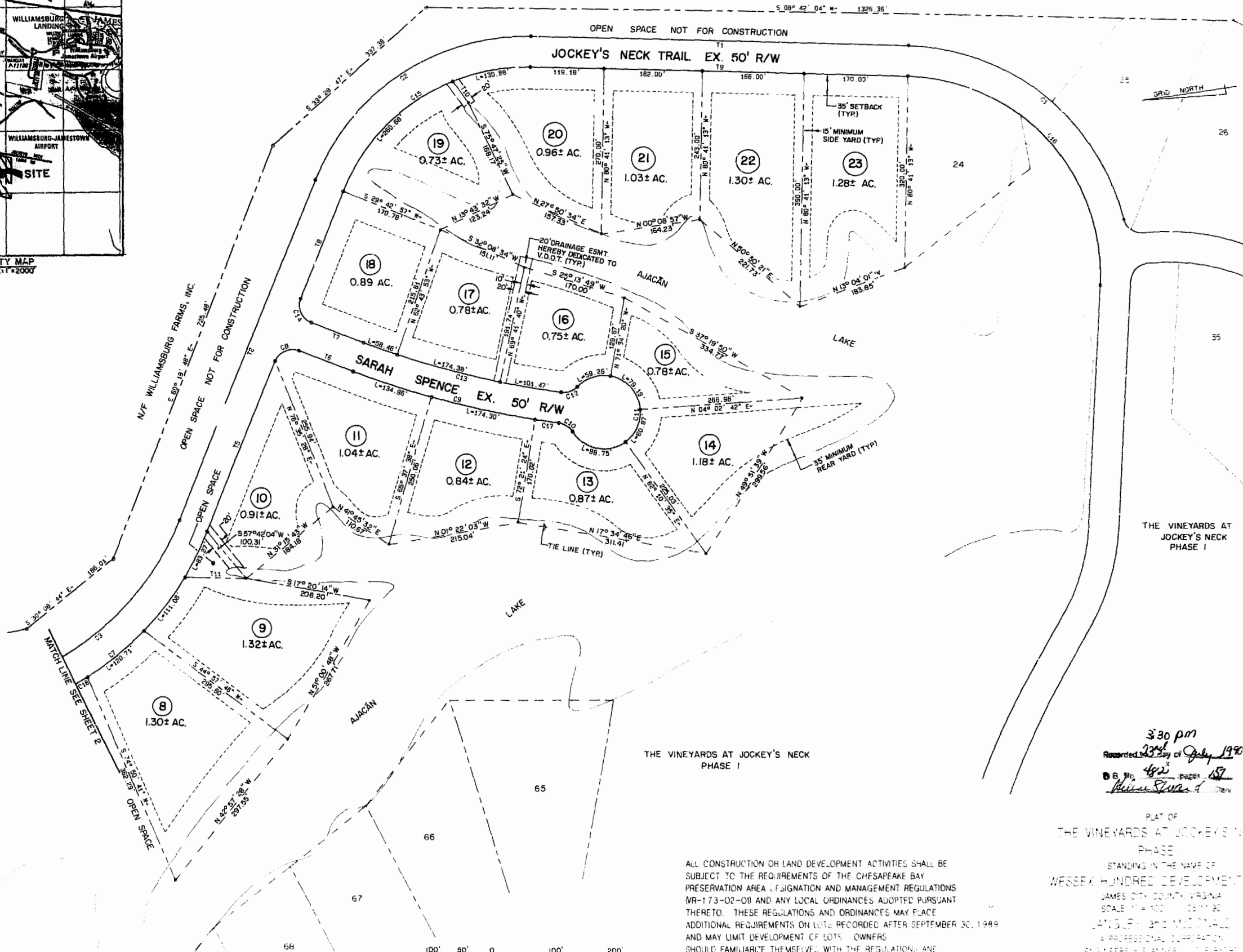


VICINITY MAP
SCALE 1" = 2000'

N/F WILLIAMSBURG FARMS, INC.

S 08° 42' 04" W 1325.36'



THE VINEYARDS AT
JOCKEY'S NECK
PHASE I

THE VINEYARDS AT JOCKEY'S NECK
PHASE I

3:30 pm
Recorded 23rd day of July 1990
D.S. No. 482 pages 157
William Swain, Jr. Clerk

PLAT OF
THE VINEYARDS AT JOCKEY'S NECK
PHASE I

STANDING IN THE NAME OF
WESSEX HUNDRED DEVELOPMENT, INC.
JAMES CITY COUNTY, VIRGINIA
SCALE 1" = 100' (CENTIMETERS)
LANGLEY and McDONNELL
A PROFESSIONAL CORPORATION
ENGINEERS - PLANNERS - ARCHITECTS
1000 GERRARD AVENUE, SUITE 100
JAMES CITY, VIRGINIA 23162

ALL CONSTRUCTION OR LAND DEVELOPMENT ACTIVITIES SHALL BE SUBJECT TO THE REQUIREMENTS OF THE CHESAPEAKE BAY PRESERVATION AREA DESIGNATION AND MANAGEMENT REGULATIONS (MR-173-02-01) AND ANY LOCAL ORDINANCES ADOPTED PURSUANT THERETO. THESE REGULATIONS AND ORDINANCES MAY PLACE ADDITIONAL REQUIREMENTS ON LOTS RECORDED AFTER SEPTEMBER 30, 1989 AND MAY LIMIT DEVELOPMENT OF LOTS. OWNERS SHOULD FAMILIARIZE THEMSELVES WITH THE REGULATIONS AND ORDINANCES AND ARE ENCOURAGED TO CONTACT THE JAMES CITY COUNTY DIRECTOR OF CODE COMPLIANCE FOR MORE INFORMATION.

