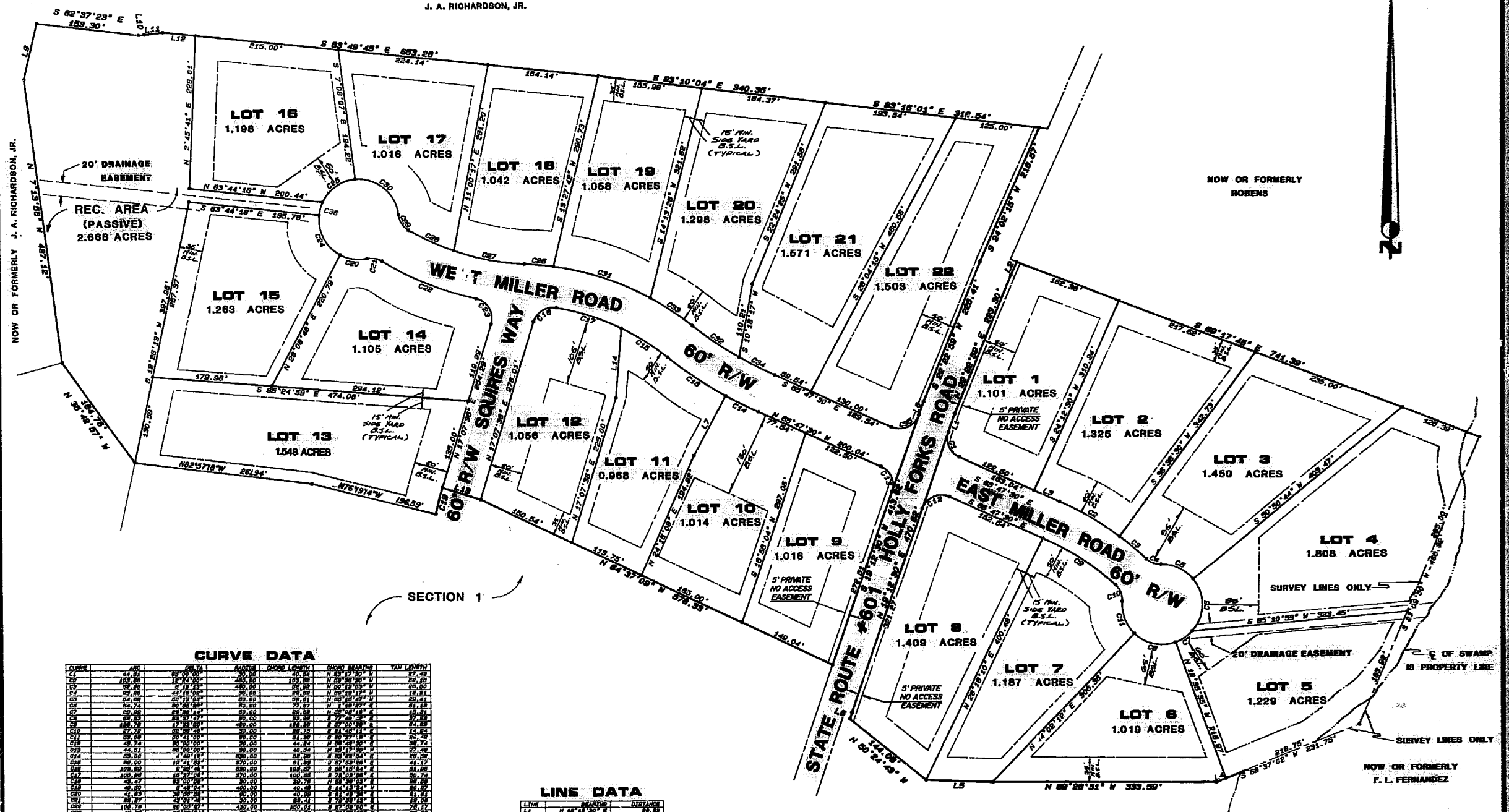


NOW OR FORMERLY  
J. A. RICHARDSON, JR.

NOW OR FORMERLY  
ROBENS

NOW OR FORMERLY  
F. L. FERNANDEZ



SECTION 1

**CURVE DATA**

CURVE	ARC	CHORD	ANGLE	CHORD BEARING	TAN LENGTH
C1	44.81	80.00	90.00	N 89°19'30" E	87.49
C2	109.80	180.00	180.00	N 89°19'30" E	87.49
C3	25.80	50.00	90.00	N 89°19'30" E	87.49
C4	25.80	50.00	90.00	N 89°19'30" E	87.49
C5	44.81	80.00	90.00	N 89°19'30" E	87.49
C6	109.80	180.00	180.00	N 89°19'30" E	87.49
C7	25.80	50.00	90.00	N 89°19'30" E	87.49
C8	25.80	50.00	90.00	N 89°19'30" E	87.49
C9	44.81	80.00	90.00	N 89°19'30" E	87.49
C10	109.80	180.00	180.00	N 89°19'30" E	87.49
C11	25.80	50.00	90.00	N 89°19'30" E	87.49
C12	25.80	50.00	90.00	N 89°19'30" E	87.49
C13	44.81	80.00	90.00	N 89°19'30" E	87.49
C14	109.80	180.00	180.00	N 89°19'30" E	87.49
C15	25.80	50.00	90.00	N 89°19'30" E	87.49
C16	25.80	50.00	90.00	N 89°19'30" E	87.49
C17	44.81	80.00	90.00	N 89°19'30" E	87.49
C18	109.80	180.00	180.00	N 89°19'30" E	87.49
C19	25.80	50.00	90.00	N 89°19'30" E	87.49
C20	25.80	50.00	90.00	N 89°19'30" E	87.49
C21	44.81	80.00	90.00	N 89°19'30" E	87.49
C22	109.80	180.00	180.00	N 89°19'30" E	87.49
C23	25.80	50.00	90.00	N 89°19'30" E	87.49
C24	25.80	50.00	90.00	N 89°19'30" E	87.49
C25	44.81	80.00	90.00	N 89°19'30" E	87.49
C26	109.80	180.00	180.00	N 89°19'30" E	87.49
C27	25.80	50.00	90.00	N 89°19'30" E	87.49
C28	25.80	50.00	90.00	N 89°19'30" E	87.49
C29	44.81	80.00	90.00	N 89°19'30" E	87.49
C30	109.80	180.00	180.00	N 89°19'30" E	87.49

**LINE DATA**

LINE	BEARING	DISTANCE
L1	N 89°19'30" E	87.49
L2	N 89°19'30" E	87.49
L3	N 89°19'30" E	87.49
L4	N 89°19'30" E	87.49
L5	N 89°19'30" E	87.49
L6	N 89°19'30" E	87.49
L7	N 89°19'30" E	87.49
L8	N 89°19'30" E	87.49
L9	N 89°19'30" E	87.49
L10	N 89°19'30" E	87.49
L11	N 89°19'30" E	87.49
L12	N 89°19'30" E	87.49
L13	N 89°19'30" E	87.49
L14	N 89°19'30" E	87.49



**SPEARMAN & ASSOCIATES, P.C.**  
SURVEYING AND PLANNING  
489 McLAWS CIRCLE — WILLIAMSBURG, VIRGINIA  
(804) 253-8720

**CHESAPEAKE BAY ACT NOTICE**

ALL CONSTRUCTION OR LAND DEVELOPMENT ACTIVITIES SHALL BE SUBJECT TO THE REQUIREMENTS OF THE CHESAPEAKE BAY PRESERVATION AREA DESIGNATION AND MANAGEMENT REGULATIONS (VR-173-02-01) AND ANY LOCAL ORDINANCES ADOPTED PURSUANT THERETO. THESE REGULATIONS AND ORDINANCES MAY PLACE ADDITIONAL REQUIREMENTS ON LOTS RECORDED AFTER SEPTEMBER 30, 1989, AND MAY LIMIT DEVELOPMENT OF LOTS. OWNERS SHOULD FAMILIARIZE THEMSELVES WITH THE REGULATIONS AND ORDINANCES AND ARE ENCOURAGED TO CONTACT THE JAMES CITY COUNTY DIRECTOR OF CODE COMPLIANCE FOR MORE INFORMATION.

1228 6 p.m.  
Recorded 22nd day of June 1990  
B. B. No. 118, pages 602  
By *Richard S. Ward* Clerk  
By *Claudia H. Binkley* *Wp Clerk*

**SUBDIVISION PLAT  
FOR A SUBDIVISION BEING  
"KING'S VILLAGE"  
SECTION 2**

LOCATED  
JAMES CITY COUNTY, VIRGINIA  
SCALE: 1" = 100' DATE: NOVEMBER 16, 1987  
OWNER/DEVELOPER  
**WILKINSON DEVELOPMENT COMPANY**