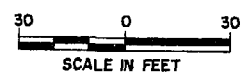


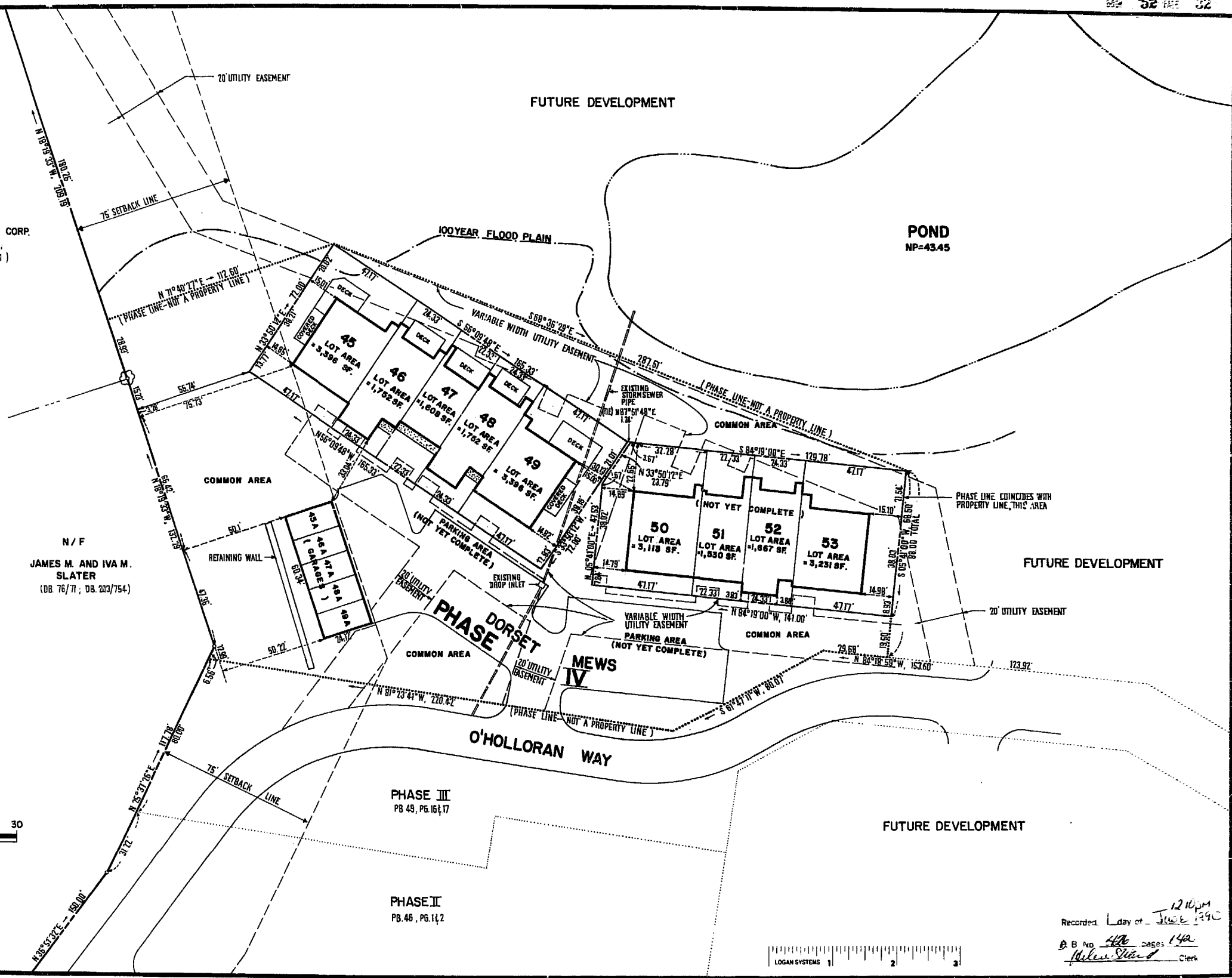
N/F  
KING AND QUEEN CORP.  
(DB. 135/491 ; PB. 181 / 378 ;  
DB. 154 / 400 ; PB. 29 / 31 )

N / F  
JAMES M. AND IVA M.  
SLATER  
(DB. 76 / 71 ; DB. 203 / 754)



FUTURE DEVELOPMENT

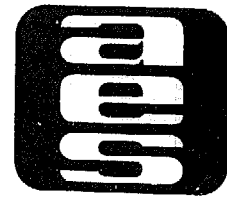
POND  
NP=43.45



FUTURE DEVELOPMENT

FUTURE DEVELOPMENT

Recorded 12:10 PM  
1 day of June 1990  
B B No. 446 pages 142  
Walter Slator Clerk



**AES**, a professional corporation  
5248 Olde Towne Road, Suite 1  
Williamsburg, Virginia 23185  
(804) 253-0040  
Engineering, Planning, Surveying

**PLAT OF SUBDIVISION  
THE MEWS  
AT WILLIAMSBURG**  
PHASE IV UNITS 45 - 53  
OWNER: CLEWIS WALTRIP  
JAMES CITY COUNTY  
BERKELEY DISTRICT VIRGINIA



No.	DATE	REVISION / COMMENT / NOTE	BY

Designed	Drawn
VMS	SS
Scale	Date
1" = 30'	MARCH, 1990
Project No.	
5656	
Drawing No.	
2 of 2	

