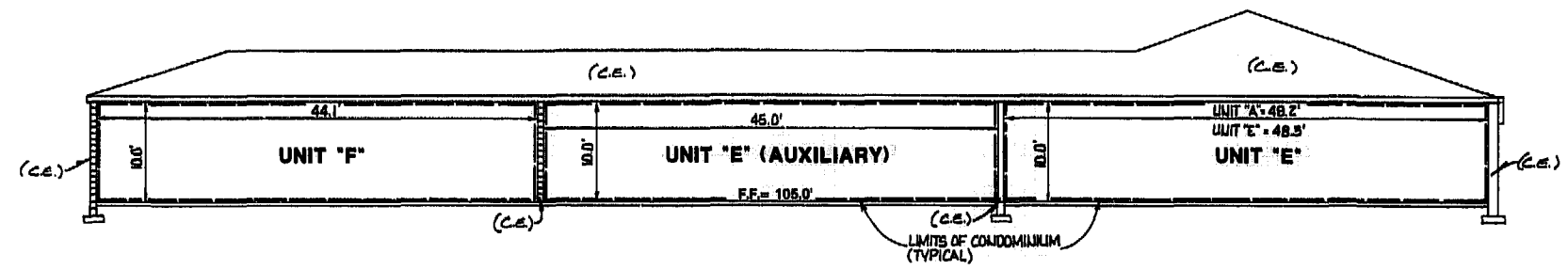


(L.C.E.) - LIMITED COMMON ELEMENT  
(C.E.) - COMMON ELEMENT

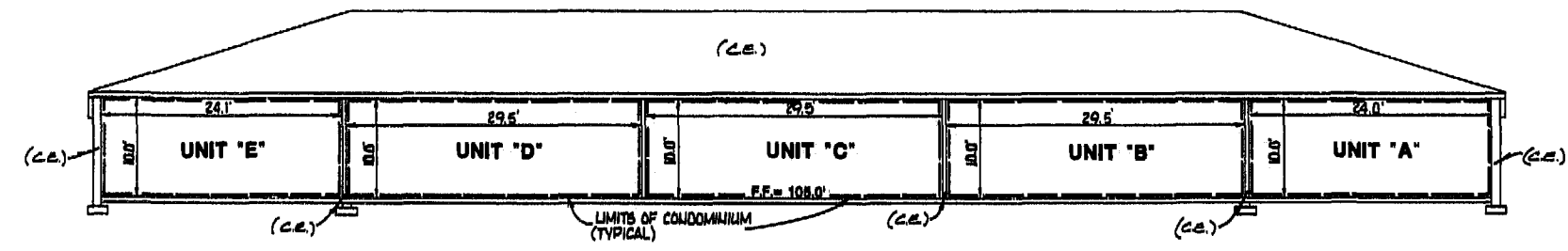
WE HEREBY CERTIFY THAT WE HAVE SURVEYED ALL OF THE UNITS OR PORTIONS THEREOF AND DO FURTHER CERTIFY THAT THESE PLANS ARE ACCURATE AND THEY COMPLY WITH SECTION 55-79.58 (B) OF THE CODE OF VIRGINIA AS AMENDED. ALL STRUCTURES ARE SUBSTANTIALLY COMPLETE.

AES, a professional corporation

BY: *Paul C. Small*  
PAUL C. SMALL, P.E., C.L.S.



**SECTION 3**  
**UNITS F, E (AUXILIARY) & E**  
SCALE: 1" = 10'

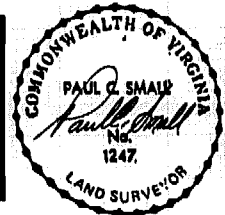


**SECTION 4**  
**UNITS E, D, C, B & A**  
SCALE: 1" = 10'



**AES, a professional corporation**  
 5248 Olde Towne Road, Suite 1  
 Williamsburg, Virginia 23185  
 (804) 253-0040  
 Engineering, Planning, Surveying

**EXHIBIT "B"**  
**PLAT OF**  
**BOB-CAT CONDOMINIUM MANAGEMENT CENTER**  
 UNITS A, B, C, D, E, E (AUXILIARY) & F  
 OWNER/DEVELOPER: ROBERT F. RIPLEY & CATHERINE J. RIPLEY  
 BERKELEY DISTRICT      JAMES CITY COUNTY      VIRGINIA



No.	DATE	REVISION / COMMENT / NOTE	BY

Designed RWE	Drawn CMA
Scale 1" = 10'	Date 4/26/90
Project No. <b>6722-C</b>	
Drawing No. <b>3 OF 3</b>	

PB 52 PB 28 *Original*

