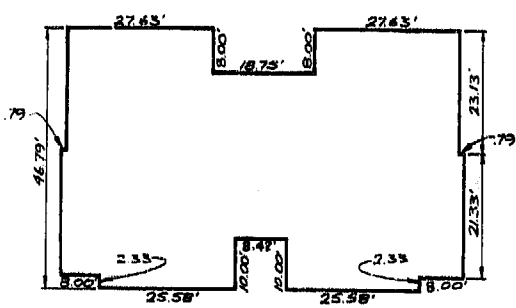


LOCATION MAP
SCALE: 1"=2000'



TYPICAL EXTERIOR DIMENSIONS AT FOUNDATION LEVEL
SCALE 1"=20'

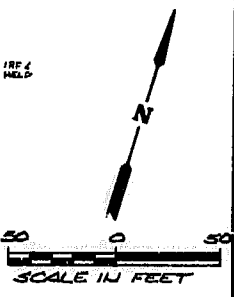
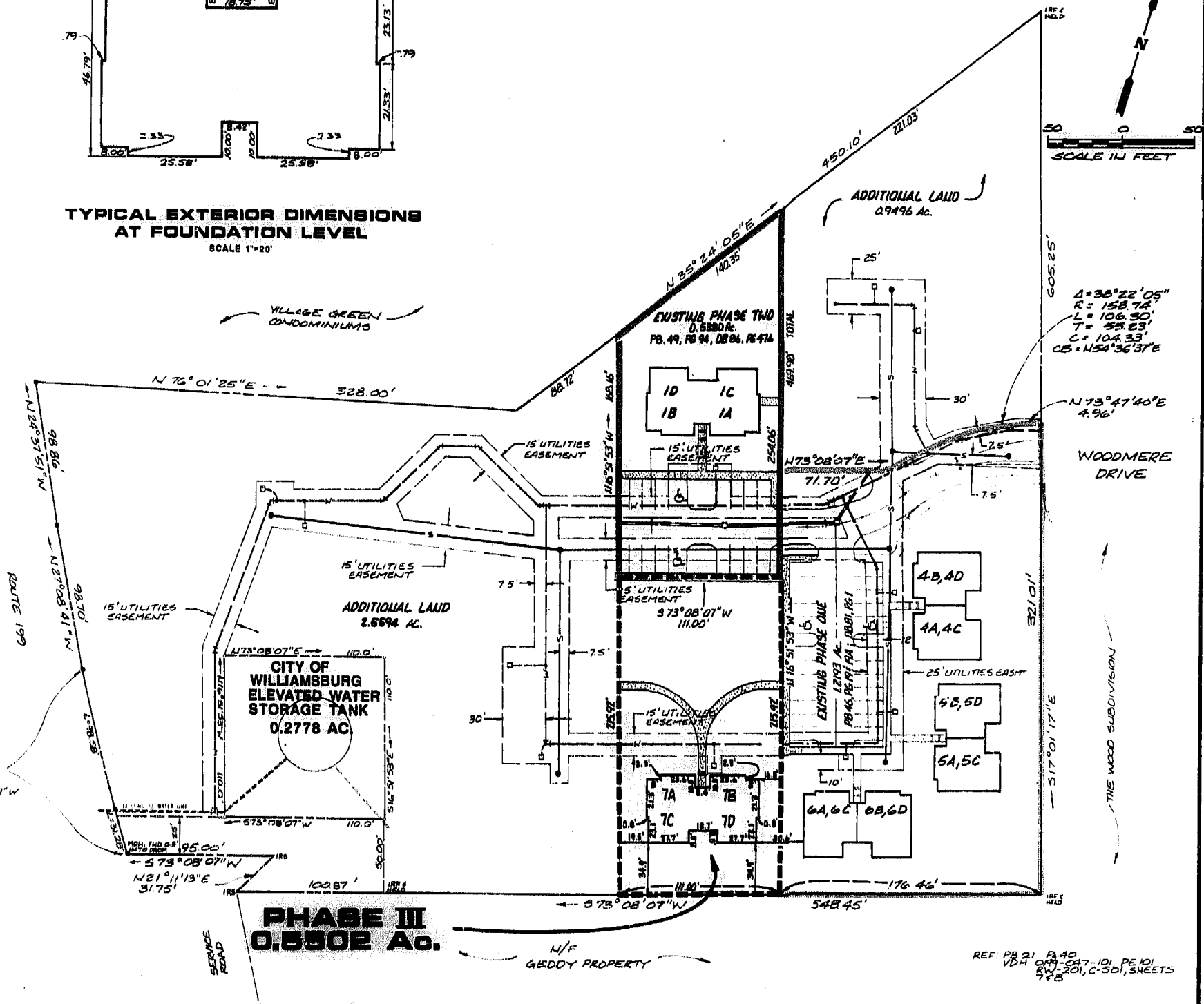
NOTE: ALL UTILITY EASEMENTS SHOWN HEREON ARE HEREBY DEDICATED TO THE CITY OF WILLIAMSBURG
(SEE "PLAN OF DRAINAGE (UTILITIES EASEMENTS)", DATED AUG. 1987) DB 81, PG 423

--- DENOTES PHASE BOUNDARY
- - - - DENOTES EXISTING PHASE BOUNDARY

WE DO HEREBY CERTIFY THAT WE HAVE SURVEYED THE SUBMITTED LAND AND DO FURTHER CERTIFY THAT THIS PLAN SHOWING LOCATION AND DIMENSIONS OF THE SUBMITTED LAND IS ACCURATE, AND THE PLAN COMPLIES WITH THE PROVISIONS OF SECTION 55-79.5B (a) OF THE CODE OF VIRGINIA AS AMENDED. ALL UNITS HAVE BEEN SUBSTANTIALLY COMPLETED.

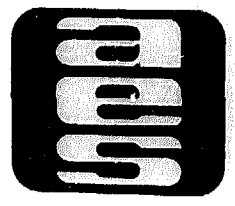
AES, A PROFESSIONAL CORPORATION

BY: *G.T. Wilson, Jr.*
G.T. WILSON, JR. C.L.S.



4=35°22'05"
R=158.74'
L=106.30'
T=55.23'
C=104.33'
CB=NS4°36'37"E

REF. PB 21 PG 40
VDH 099-587-101 PE 101
099-201, C-501, SHEETS
778



AES, a professional corporation
5248 Olde Towne Road, Suite 1
Williamsburg, Virginia 23185
(804) 253-0040
Engineering, Planning, Surveying

CONDOMINIUM PLAT
THE WOODLANDS A CONDOMINIUM
PHASE III
OWNER/DEVELOPER : S.W.N. ASSOCIATES
CITY OF WILLIAMSBURG VIRGINIA



No.	DATE	REVISION / COMMENT / NOTE	BY

Designed GAM	Drawn CMA
Scale 1"=50'	Date MAY, 1989
Project No. 6119	
Drawing No. EXHIBIT B	



PB 52 PG. 22