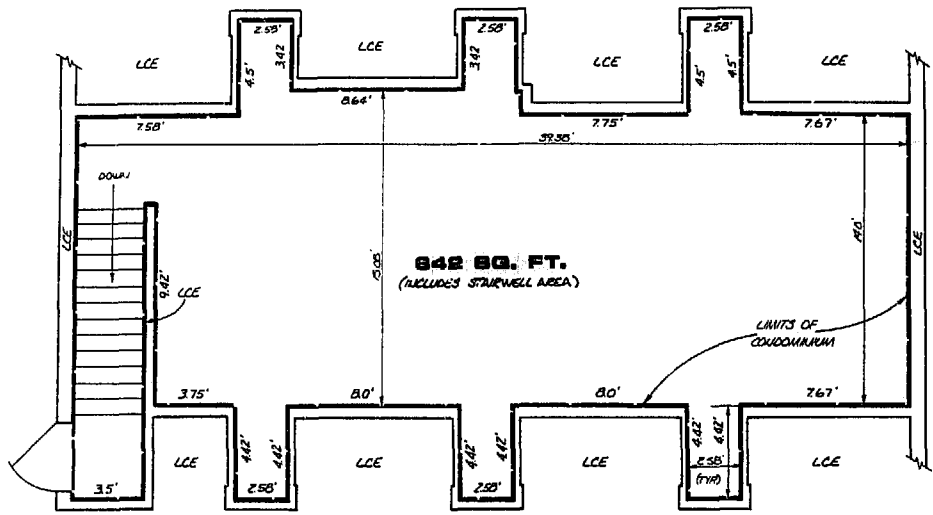
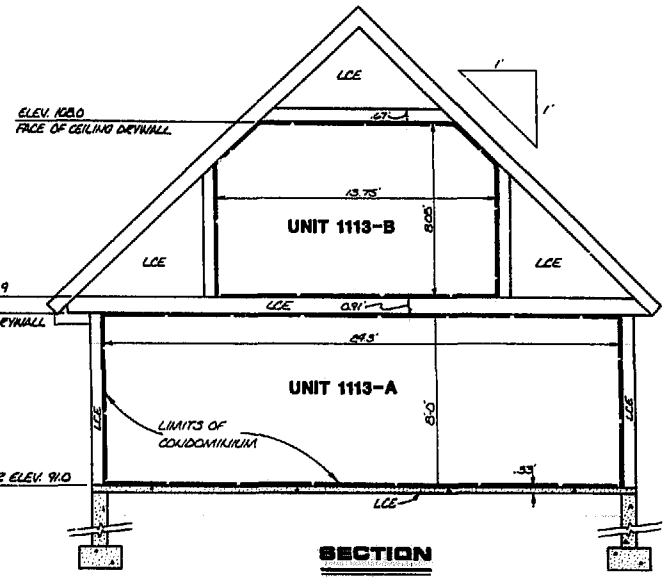


LCE - LIMITED COMMON ELEMENT



**SECOND FLOOR - UNIT 1113 - B**

SCALE: 1/4" = 1'-0"

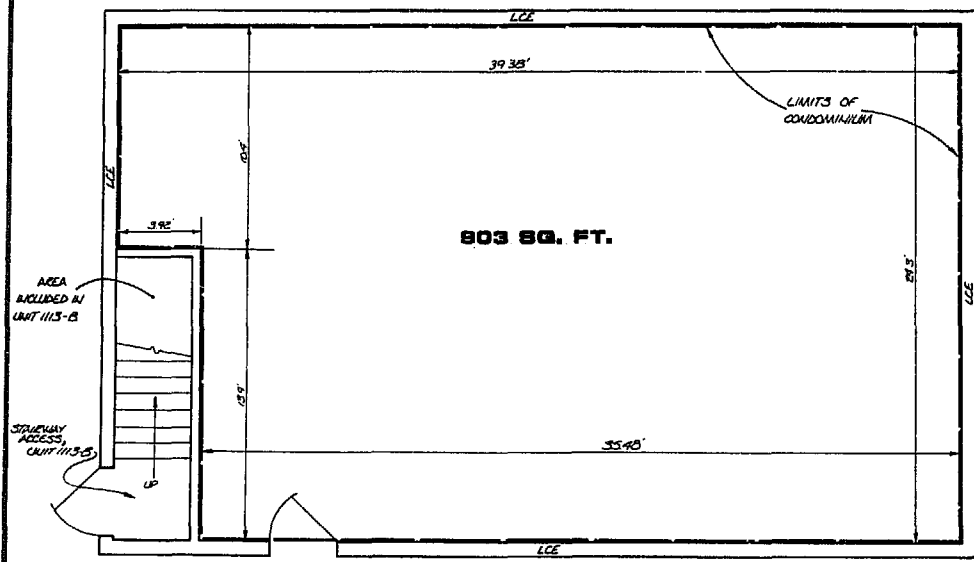


**SECTION**

SCALE: 1/4" = 1'-0"

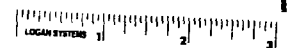
SUBFLOOR ELEV. 99.9  
ELEV. 99.0  
FACE OF CEILING DRYWALL

CONCRETE FLOOR ELEV. 91.0



**FIRST FLOOR - UNIT 1113 - A**

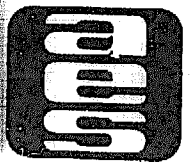
SCALE: 1/4" = 1'-0"



WE HEREBY CERTIFY THAT WE HAVE SURVEYED ALL OF THE UNITS OR PORTIONS THEREOF AND DO FURTHER CERTIFY THAT THE PLANS ARE ACCURATE AND THEY COMPLY WITH SECTION 55-79.58 (B) OF THE CODE OF VIRGINIA AS AMENDED. ALL STRUCTURES ARE SUBSTANTIALLY COMPLETE.

AES, a professional corporation

BY: *Paul C. Small*  
PAUL C. SMALL P.E., C.L.S.



**AES**, a professional corporation  
1761 Jamestown Road, Williamsburg, Va. 23185  
804-253-0040  
Engineering, Planning, Surveying

**CONDOMINIUM PLAT  
OLD COLONY  
PROFESSIONAL CENTER  
UNITS 1113 A & 1113 B  
OFFICE CONDOMINIUMS**  
OWNER: JON H. BOLLING, TRUSTEE UNDER TRUST AGREEMENT DATED 12/31/1974  
JAMES CITY COUNTY VIRGINIA



No.	DATE	REVISION / COMMENT / NOTE	BY

Designed	Drawn
Scale	Date
NOTED	12/28/88
Project No.	7058
Drawing No.	3 OF 5