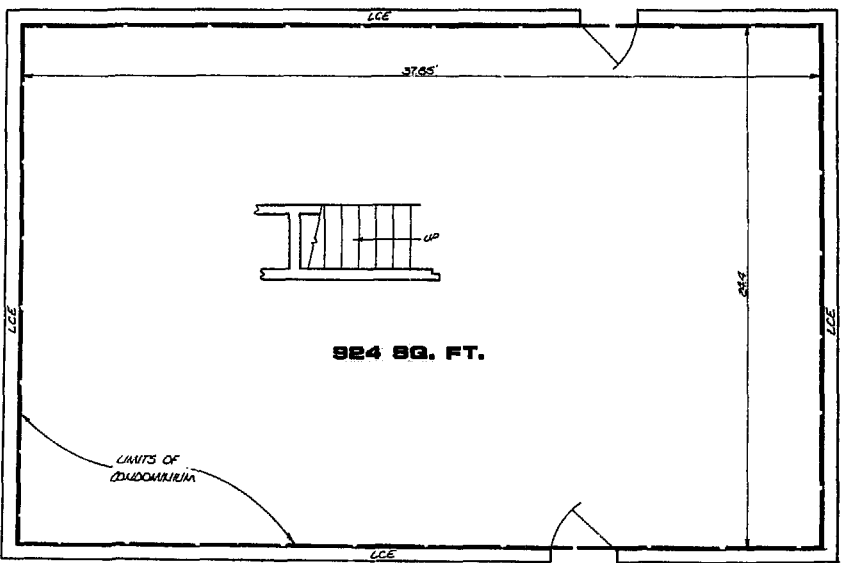
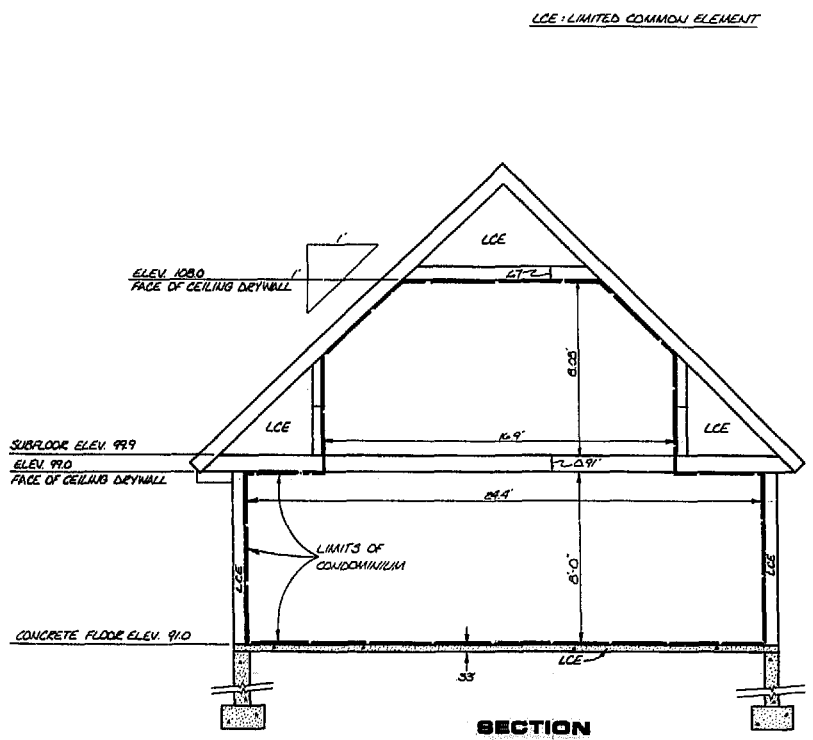


SECOND FLOOR - UNIT 1111
SCALE: 1/4" = 1'-0"



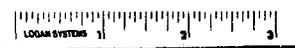
FIRST FLOOR - UNIT 1111
SCALE: 1/4" = 1'-0"



SECTION
SCALE: 1/4" = 1'-0"

WE HEREBY CERTIFY THAT WE HAVE SURVEYED ALL OF THE UNITS OR PORTIONS THEREOF AND DO FURTHER CERTIFY THAT THE PLANS ARE ACCURATE AND THEY COMPLY WITH SECTION 55-79.58 (B) OF THE CODE OF VIRGINIA AS AMENDED. ALL STRUCTURES ARE SUBSTANTIALLY COMPLETE.

AES, a professional corporation
BY: *Paul C. Small*
PAUL C. SMALL P.E., C.L.S.



AES, a professional corporation
1761 Jamestown Road, Williamsburg, Va. 23185
804-253-0040
Engineering, Planning, Surveying

**CONDOMINIUM PLAT
OLD COLONY
PROFESSIONAL CENTER
UNIT 1111
OFFICE CONDOMINIUMS**
OWNER: JON N. BOLLING, TRUSTEE UNDER TRUST AGREEMENT DATED 12/31/1974
JAMES CITY COUNTY VIRGINIA



No.	DATE	REVISION / COMMENT / NOTE	BY

Designed	Drawn
Scale	Date
Project No.	
7056	
Drawing No.	
2 OF 5	