

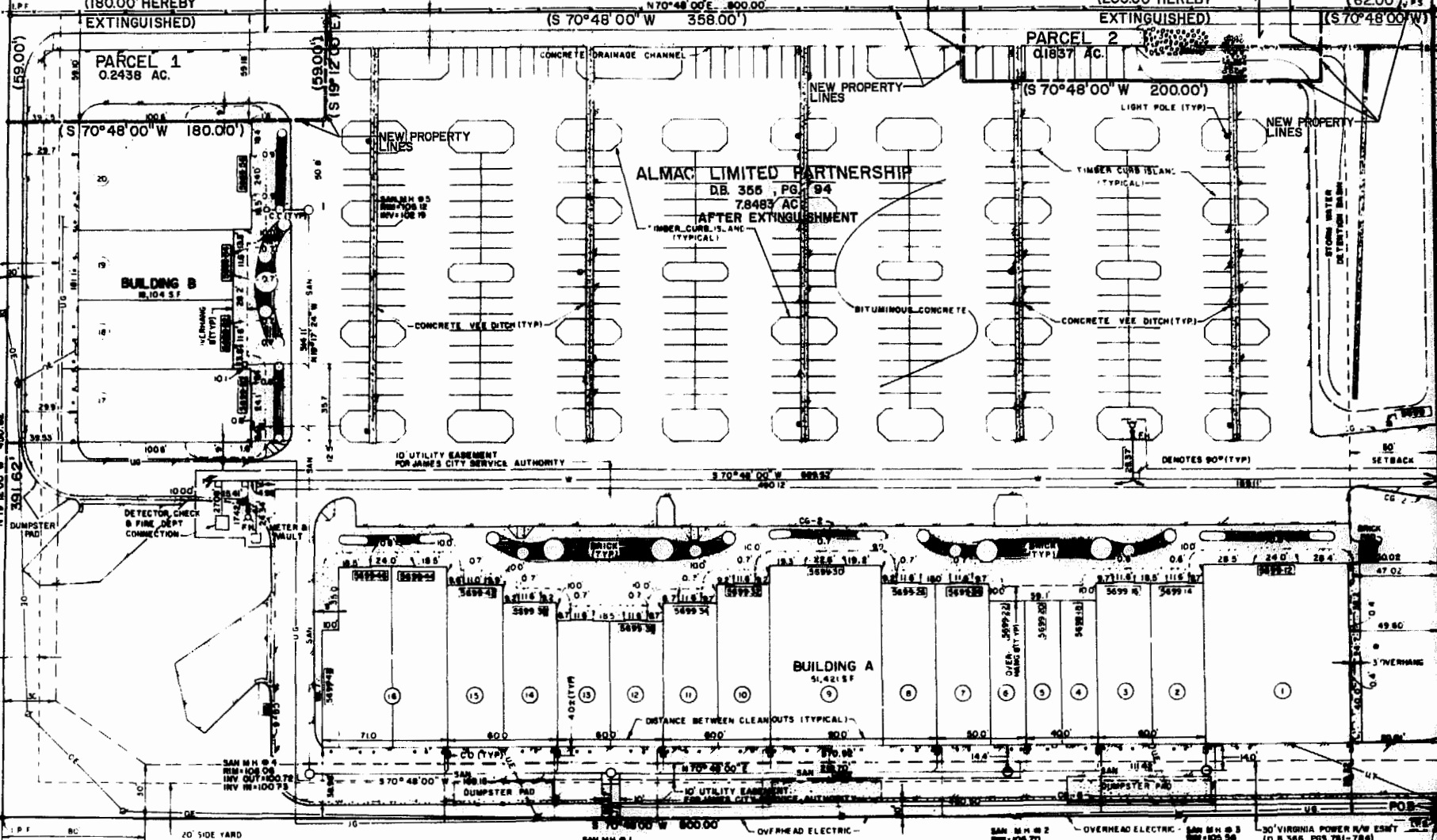
MATCH LINE

SEE SHEET 2 OF 3

NOTES

- A. A WAIVER OF THE 20' SIDE YARD REQUIREMENT FOR THE COMMON LINES BETWEEN PROPERTY OF ALMAC LIMITED PARTNERSHIP AND ALMAC V LIMITED PARTNERSHIP AND BETWEEN PROPERTY OF ALMAC V LIMITED PARTNERSHIP AND ALMAC II LIMITED PARTNERSHIP WAS GRANTED BY THE PLANNING COMMISSION. (SEEING ORDINANCE SECTION 20-334) (CASE NO. 89-94-49)
- B. A WAIVER OF THE OPEN SPACE REGULATIONS FOR PROPERTY OF ALMAC LIMITED PARTNERSHIP, ALMAC II LIMITED PARTNERSHIP AND ALMAC V LIMITED PARTNERSHIP WAS GRANTED BY THE PLANNING COMMISSION. (SEEING ORDINANCE SECTION 20-334) (CASE NO. 89-94-49)

PARCEL B
ALMAC V LIMITED PARTNERSHIP
 DB. 465, PG. 117
 3,7098 AC.
 ACREAGE AFTER EXTINGUISHMENT = 4.5152 AC.
 N 70° 48' 00" W 358.00'



N/2 WILLIAMSBURG MEMORIAL PARK, INC.

TO LIGHT FOOT

U S ROUTE 60 (80' R/W)
RICHMOND ROAD

1/2 WILLIAMSBURG

20 REAR YARD

20 SIDE YARD

N/F SVEIN J. LASSEN, TRUSTEE

SAN MH #1
 INV +100.07
 INV +100.11 E
 INV +100.06 S

SAN MH #2
 INV +100.70
 INV OUT +100.80
 INV IN +100.84

SAN MH #3
 INV +100.58
 INV +101.60

30 VIRGINIA POWER R/W ESMY
 (D.B. 365, PGS. 761-764)

10.57' A. TO OLD TO THE R.R.

PLAN OF
 PARCELS 1, 2, 3 AND 4
 A SUBDIVISION OF PROPERTY OF
 ALMAC LIMITED PARTNERSHIP,
 ALMAC II LIMITED PARTNERSHIP
 AND
 ALMAC V LIMITED PARTNERSHIP
 JAMES CITY COUNTY VIRGINIA
 SCALE: 1"=40'
 LANGLEY AND McDONALD
 A PROFESSIONAL CORPORATION
 ENGINEERS-PLANNERS-SURVEYORS
 VIRGINIA BEACH & WILLIAMSBURG, VIRGINIA

