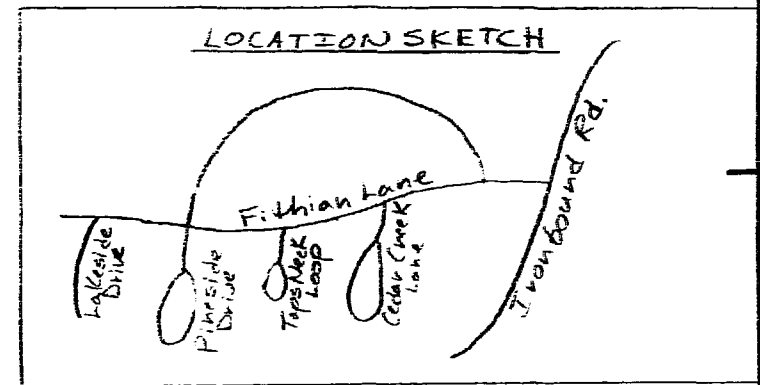
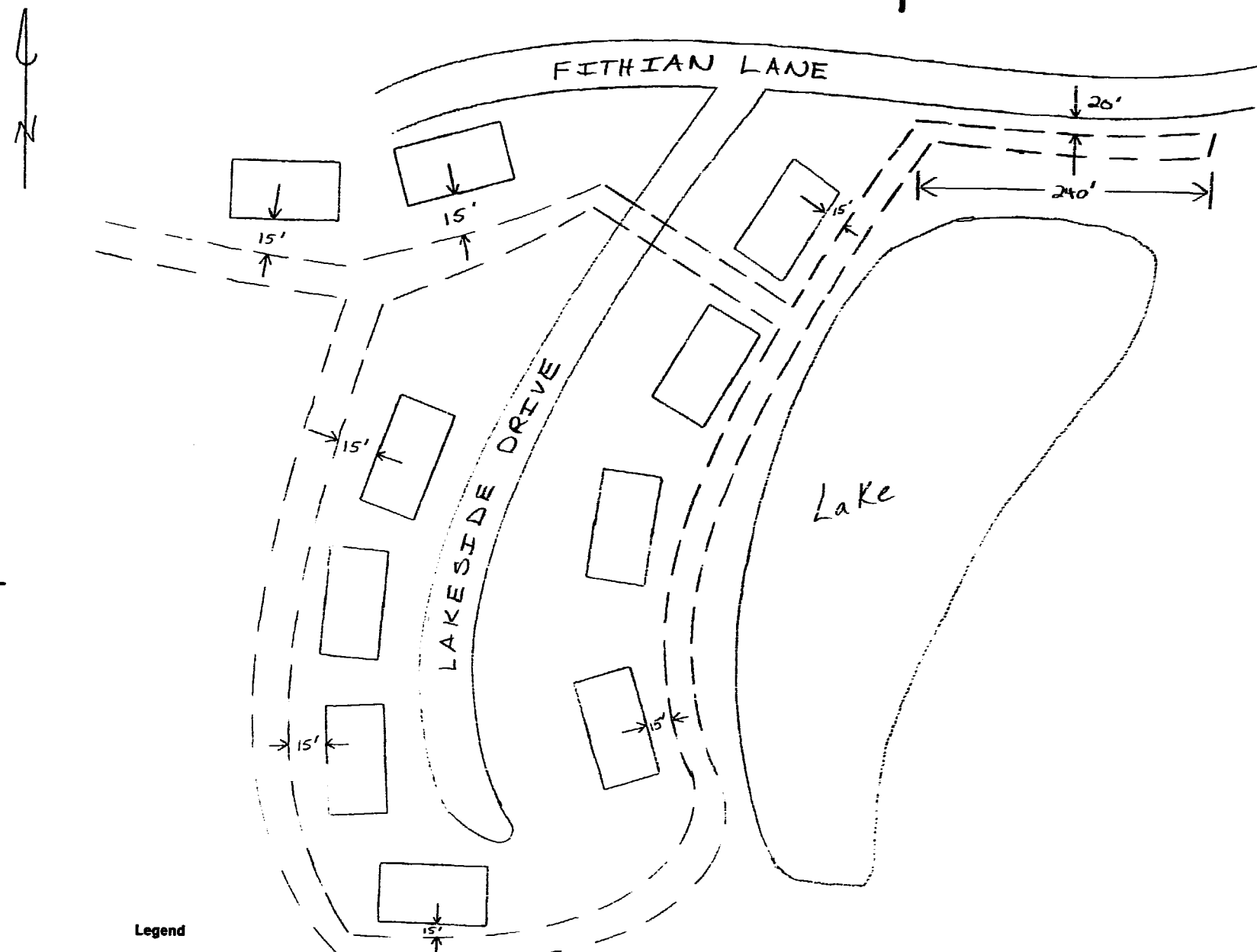


CDR 16



Legend
 - - - - - Location Of Boundary Line Of Designated Right-of-Way
 15 Feet in width

W.A.P.D.



**Plat To Accompany
 Right-Of-Way Agreement**

Virginia Electric and Power Company

District WILLIAMSBURG		
District-Township-Borough	County-City	State
BERKELEY	JAMES CITY VA	
Office Williamsburg	Plat Number 28-90-0010	
Estimate Number 28-909-73	Grid Number M 1736	
Date 1-29-90	By K.M. Erickson	

Recorded ^{2:29 p.m.} *8th* day of **Feb. 1990**
 in
 B. B. No. **465** pages **64**
Nancy S. Ward Clerk
by Dawn O. Mat Replend

