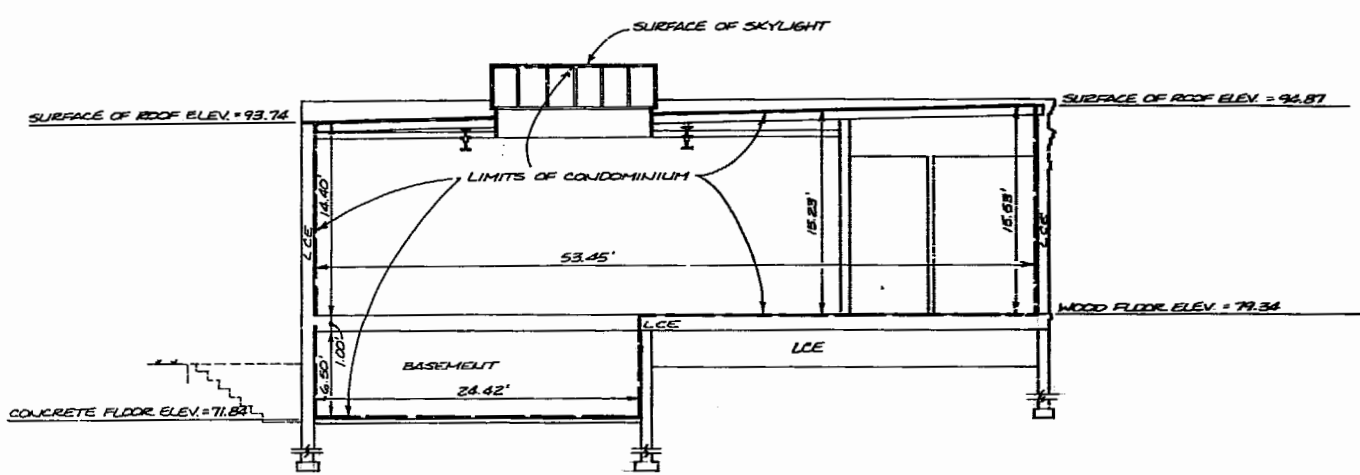


LCE = LIMITED COMMONWELEMENT

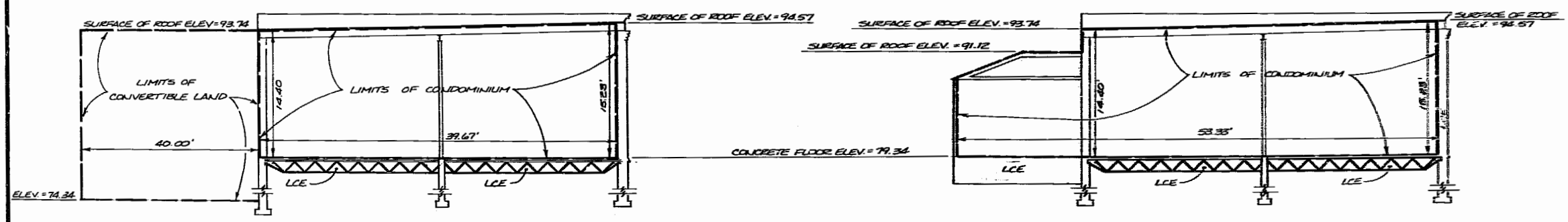
WE HEREBY CERTIFY THAT WE HAVE SURVEYED ALL OF THE UNITS OR PORTIONS THEREOF AND DO FURTHER CERTIFY THAT THESE PLANS ARE ACCURATE AND THEY COMPLY WITH SECTION 55-79.58 (B) OF THE CODE OF VIRGINIA AS AMENDED. ALL STRUCTURES ARE SUBSTANTIALLY COMPLETE.

AES, a professional corporation

BY: Paul C. Small  
PAUL C. SMALL, P.E., C.L.S.



**SECTION  
UNIT 2**  
SCALE: 1/8" = 1'-0"



**SECTION  
UNIT 3**  
SCALE: 1/8" = 1'-0"

**SECTION  
UNIT 1**  
SCALE: 1/8" = 1'-0"



**AES**, a professional corporation  
 5248 Olde Towne Road, Suite 1  
 Williamsburg, Virginia 23185  
 (804) 253-0040  
 Engineering, Planning, Surveying

**CONDOMINIUM PLAT  
 OF  
 WHITEHALL  
 UNITS 1, 2, & 3**  
 OWNER/DEVELOPER: MILLER PROPERTIES  
 JAMES CITY COUNTY VIRGINIA



No.	DATE	REVISION / COMMENT / NOTE	BY

Designed	Drawn
Scale	Date
PROJECTED	JULY 28, 1999
Project No.	
7043	
Drawing No.	
3 of 3	

