

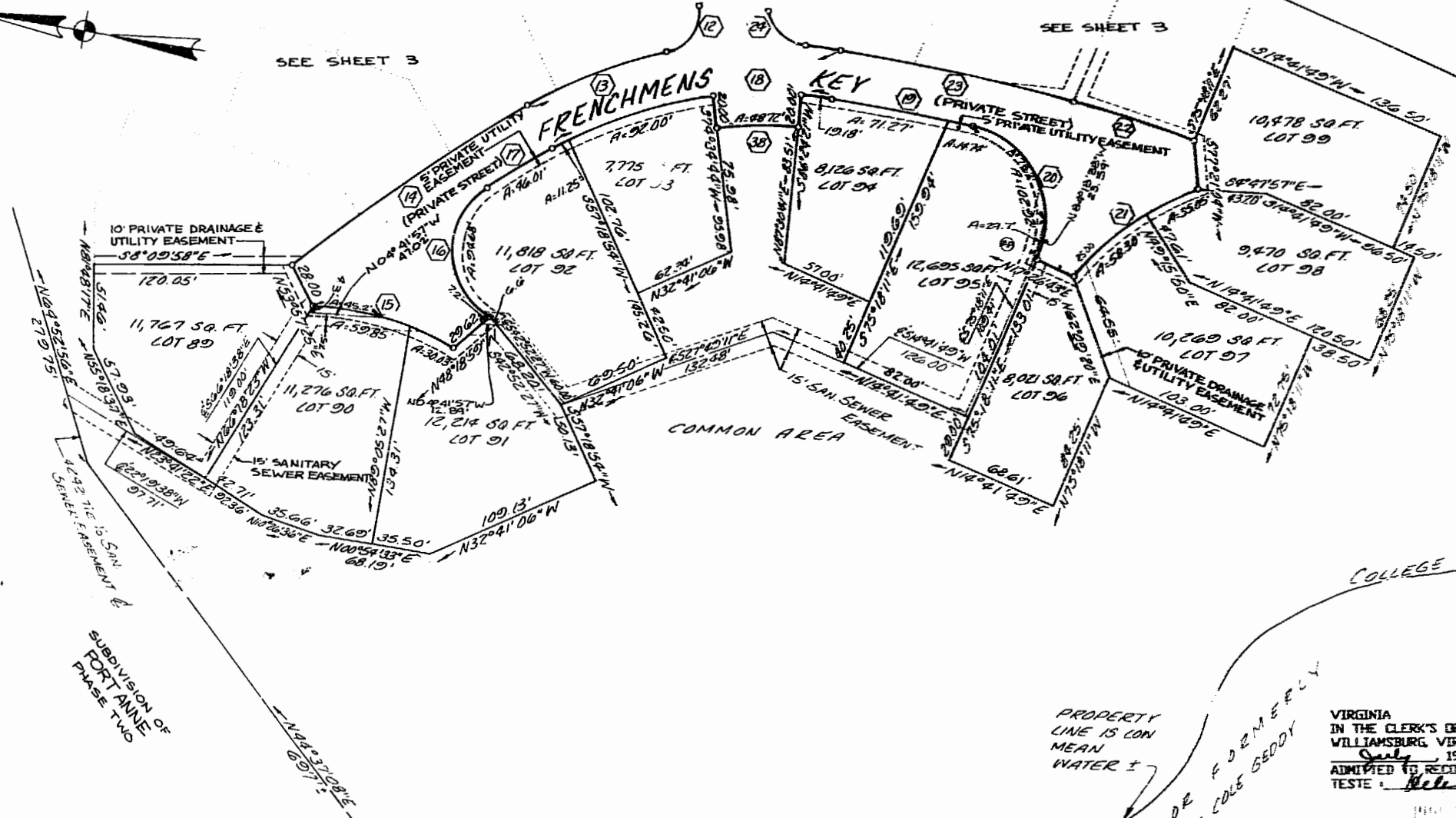
SEE SHEET 1

SEE SHEET 3

SEE SHEET 3



PARCEL 4
PARCEL 3



SUBDIVISION OF
FORT ANNE
PHASE TWO

CURVE DATA

NO.	BEARING	CHORD	DELTA	RADIUS	LENGTH	TAN
12	N64°48'45"W	35.02'	88°54'21"	25.00'	38.79'	24.53'
13	S18°54'54"E	192.00'	39°13'33"	286.00'	195.80'	101.91'
14	S42°50'39"E	172.50'	8°37'57"	1146.00'	172.66'	86.50'
15	S 7°54'56"W	88.76'	31°24'03"	164.00'	89.88'	46.10'
16	N79°29'46"E	78.50'	119°13'41"	45.50'	94.68'	77.60'
17	S39°42'32"E	46.00'	02°21'43"	1116.00'	46.01'	23.01'
18	S18°54'54"E	171.86'	39°13'33"	256.00'	175.26'	91.22'
19	S02°20'34"W	86.00'	03°17'23"	1498.00'	86.01'	43.02'
20	S55°42'59"W	89.50'	103°27'27"	57.00'	102.92'	72.25'
21	S44°04'12"E	92.42'	28°00'08"	191.00'	93.35'	47.63'
22	S09°52'59"W	71.50'	07°09'15"	573.00'	71.55'	35.82'
23	S03°30'07"W	149.50'	05°36'29"	1528.00'	149.56'	74.84'
24	N33°50'33"E	30.39'	74°52'23"	25.00'	32.67'	19.14'
38	S09°30'28"E	48.63'	11°49'37"	236.00'	48.72'	24.45'

VIRGINIA
IN THE CLERK'S OFFICE OF THE CIRCUIT COURT OF
WILLIAMSBURG, VIRGINIA ON THIS 29th DAY OF
July, 1989, THIS PLAT WAS RECEIVED AND
ADMITTED TO RECORD IN MAP BOOK 51 PAGE 18-14
TESTE: Robert Swad CLERK

LOGAN SYSTEMS 1 2 3

Talbot & Associates, Ltd.
Virginia Beach, Va. • Newport News, Va. • Suffolk, Va.

SUBDIVISION
OF
PORT ANNE
PHASE THREE
WILLIAMSBURG, VIRGINIA
SHEET 2 OF 3
JUNE 13, 1989 SCALE 1" = 50'

