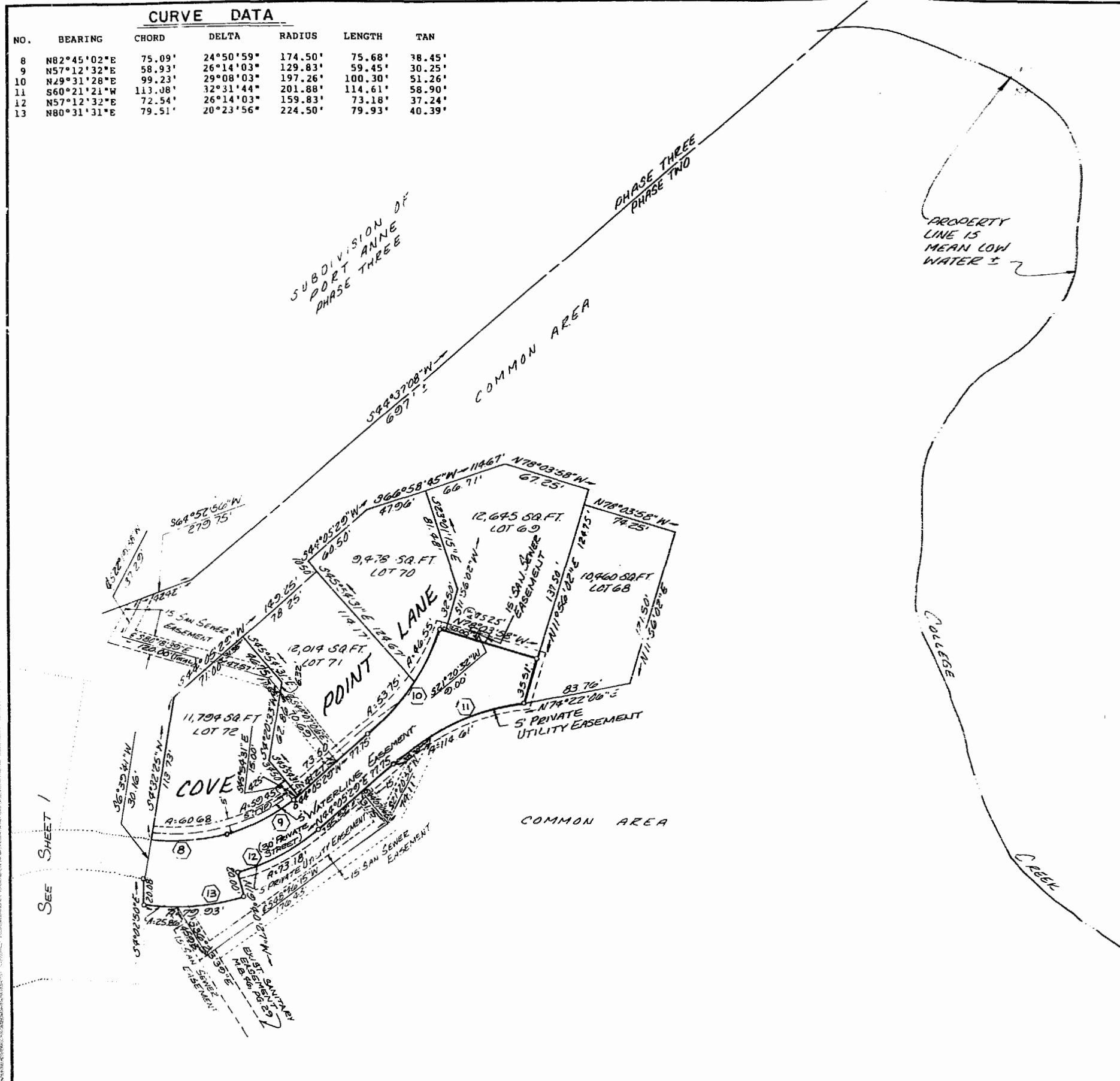


CURVE DATA

NO.	BEARING	CHORD	DELTA	RADIUS	LENGTH	TAN
8	N82°45'02"E	75.09'	24°50'59"	174.50'	75.68'	38.45'
9	N57°12'32"E	58.93'	26°14'03"	129.83'	59.45'	30.25'
10	N29°31'28"E	99.23'	29°08'03"	197.26'	100.30'	51.26'
11	S60°21'21"W	113.08'	32°31'44"	201.88'	114.61'	58.90'
12	N57°12'32"E	72.54'	26°14'03"	159.83'	73.18'	37.24'
13	N80°31'31"E	79.51'	20°23'56"	224.50'	79.93'	40.39'



VIRGINIA
 IN THE CLERK'S OFFICE OF THE CIRCUIT COURT OF
 WILLIAMSBURG, VIRGINIA ON THIS 21st DAY OF
Oct, 1989, THIS PLAT WAS RECEIVED AND
 ADMITTED TO RECORD IN MAP BOOK 51 PAGE 11-14
 TESTE: Walter D. Hines CLERK

LOGGING SYSTEMS 1 2 3

Tabot & Associates, Ltd.
 Virginia Beach, Va. • Newport News, Va. • Suffolk, Va.

SUBDIVISION
 OF
PORT ANNE
 PHASE II - B
 WILLIAMSBURG, VIRGINIA
 SHEET 2 OF 2
 JUNE 13, 1989 SCALE: 1" = 50'

SEE SHEET 1

