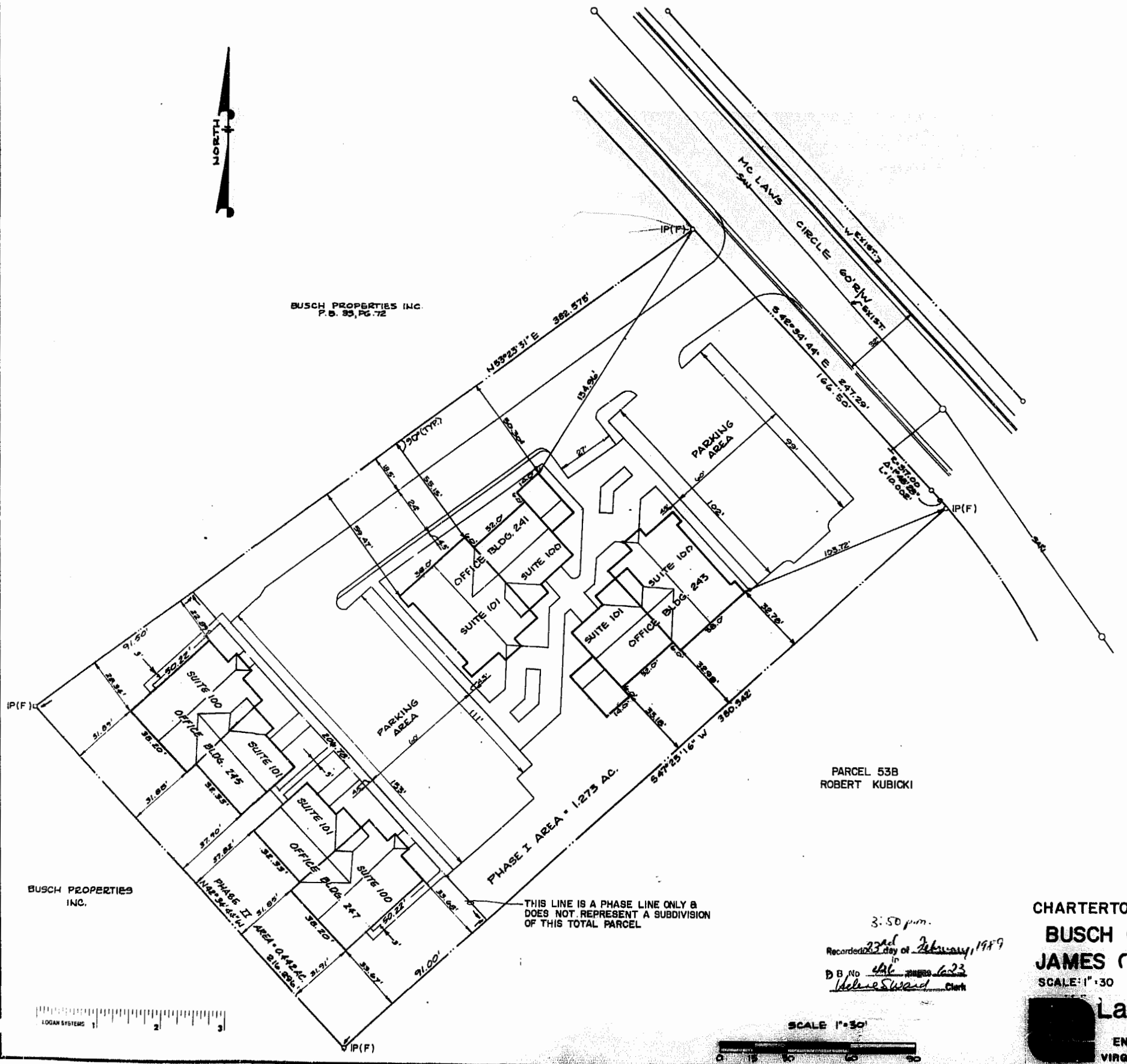


BUSCH PROPERTIES INC.
P.B. 85, PG. 72



SURVEYOR'S CERTIFICATE
THIS IS TO CERTIFY THAT THIS BOUNDARY SURVEY WAS PERFORMED UNDER MY DIRECTION AND THE TITLE LINES ARE CORRECT AS SHOWN.
Donald E. Ochs 2/23/89
DATE



PARCEL 53B
ROBERT KUBICKI

BUSCH PROPERTIES INC.

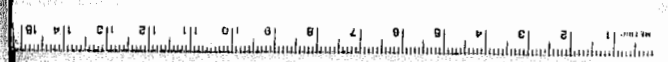
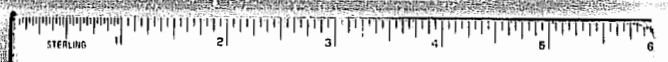
THIS LINE IS A PHASE LINE ONLY & DOES NOT REPRESENT A SUBDIVISION OF THIS TOTAL PARCEL

3:50 p.m.
Recorded 23 day of February, 1989
P.B. No. 446 pages 6-23
Delores Sward Clerk

**EXHIBIT A
PHASE II**

CHARTERTOWNE PROFESSIONAL CENTER
BUSCH CORPORATE CENTER
JAMES CITY COUNTY, VIRGINIA
SCALE: 1" = 30' DATE: 10-20-88

Langley and McDonald
A PROFESSIONAL CORPORATION
ENGINEERS - PLANNERS - SURVEYORS
VIRGINIA BEACH - WILLIAMSBURG, VIRGINIA



1/13 5084

DWG. NO. 3144 W