

NO.	Δ	RADIUS	LENGTH	TANGENT	CHORD	CHORD BEARING
136	17°37'39"	232.36'	71.49'	36.03'	71.21'	S70°11'54"W
137A	26°33'04"	232.36'	107.68'	54.82'	106.72'	S48°06'32"W
137B	70°18'39"	25.00'	30.68'	17.61'	28.79'	S69°59'20"W
138A	08°29'12"	25.00'	3.70'	1.85'	3.70'	N70°36'45"W
138B	20°27'12"	265.66'	94.83'	47.93'	94.33'	N76°35'46"W
139	14°09'55"	265.66'	65.68'	33.01'	65.51'	S86°05'41"W
142	31°03'44"	50.00'	27.11'	13.90'	26.78'	S63°28'12"W
143	30°00'00"	50.00'	26.18'	13.40'	25.88'	S32°57'00"W
144	49°22'19"	50.00'	43.09'	22.98'	41.76'	S05°44'09"E
145	34°31'40"	50.00'	30.13'	15.54'	29.68'	S72°15'50"E
146A	71°27'36"	50.00'	62.36'	35.97'	58.40'	N54°44'31"E
146B	23°10'25"	50.00'	20.22'	10.25'	20.09'	N30°35'56"E
147	36°49'35"	50.00'	32.14'	16.65'	31.59'	N60°57'56"E
148	07°04'05"	215.66'	26.60'	13.32'	26.59'	N82°32'47"E
149A	27°33'02"	215.66'	103.70'	52.87'	102.70'	S80°08'40"E
149B	78°47'50"	25.00'	34.38'	20.53'	31.74'	S26°58'14"E
149C	05°10'42"	232.36'	21.00'	10.51'	20.99'	S09°50'20"W
149D	16°03'08"	257.71'	72.20'	36.34'	71.97'	S15°21'33"W
150	39°11'53"	257.71'	176.31'	91.76'	172.89'	S42°54'03"W
152	23°39'58"	50.00'	20.65'	10.48'	20.51'	S50°40'00"W
153	52°32'09"	50.00'	45.85'	24.68'	44.26'	S12°33'56"W
154	98°40'14"	50.00'	86.11'	75.85'	75.85'	S63°02'15"E
155A	41°54'10"	50.00'	36.57'	19.14'	35.76'	N23°27'04"E
155B	60°00'00"	50.00'	52.36'	28.87'	50.00'	N32°29'59"E
156A	09°12'01"	707.14'	113.55'	56.90'	113.43'	S67°05'59"W
156B	03°22'39"	307.71'	18.14'	9.07'	18.14'	N60°48'47"E
157A	07°46'00"	707.14'	95.86'	48.00'	95.78'	S75°35'00"W
157B	13°48'43"	307.71'	74.18'	37.27'	74.00'	N52°12'58"E
158A	12°16'49"	707.14'	151.56'	76.07'	151.27'	S85°36'24"W
157B	04°39'36"	307.71'	25.03'	12.52'	25.02'	N42°58'48"E
159	11°12'06"	307.71'	60.16'	30.18'	60.06'	N35°02'57"E
160A	22°11'55"	307.71'	119.22'	60.37'	118.48'	N18°20'57"E
160B	03°08'32"	182.36'	10.00'	5.00'	10.00'	N08°49'15"E
161	68°37'12"	182.36'	218.40'	124.44'	205.58'	N44°42'08"E

GREENWAY CURVE DATA

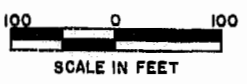
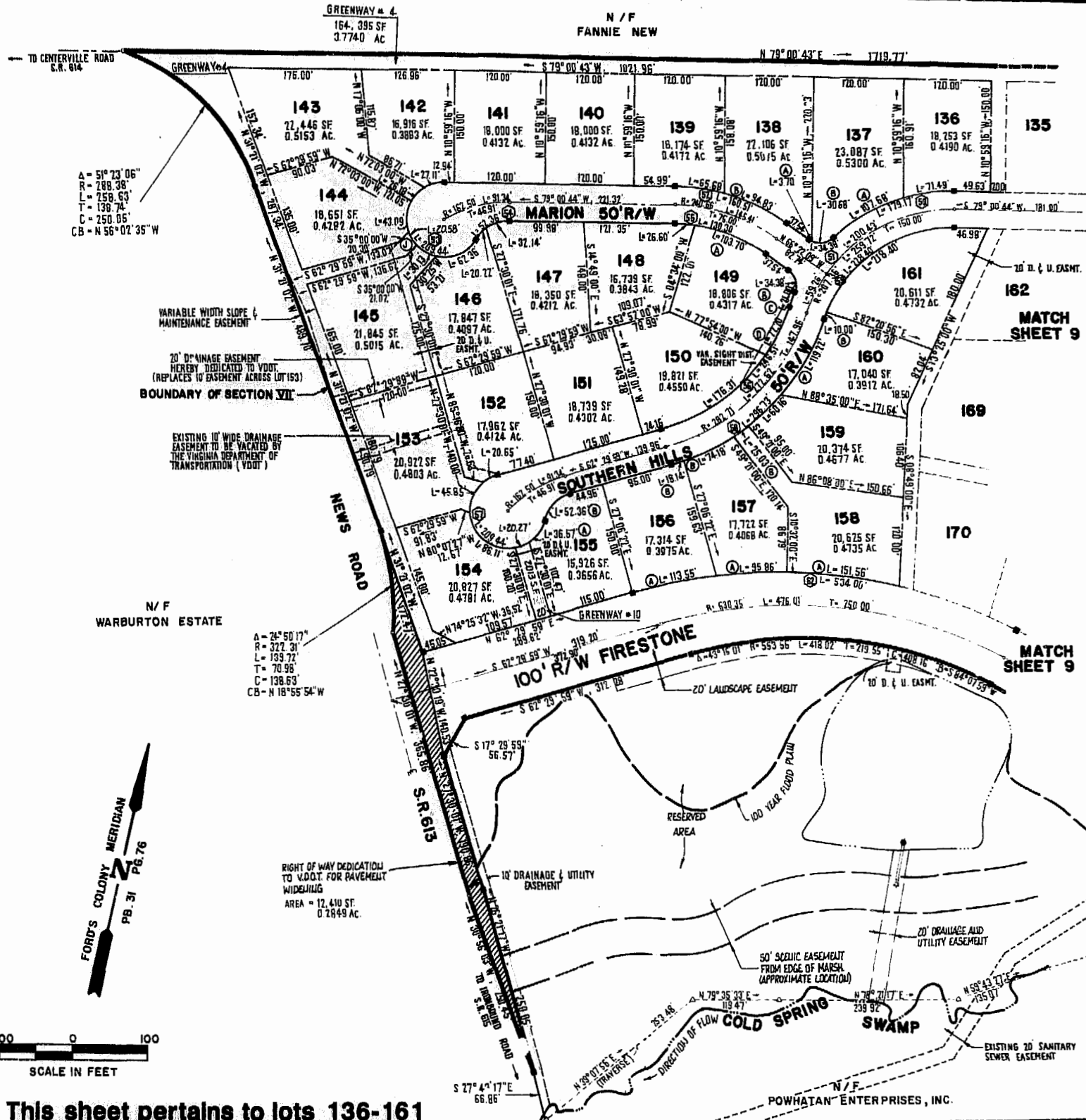
GREENWAY NO.	DELTA	RADIUS	LENGTH	TANGENT	CHORD	CHORD BEARING
47	23°34'41"	50.00'	20.58'	10.44'	20.43'	S43°12'39"E
10	23°13'28"	50.00'	20.27'	10.27'	20.13'	N56°00'53"E

RIGHT-OF-WAY CURVE DATA

NO.	DELTA	RADIUS	LENGTH	TANGENT	CHORD	CHORD BEARING
50	44°10'44"	232.36'	179.17'	94.30'	174.76'	N56°55'22"E
51	78°47'50"	25.00'	34.38'	20.53'	31.74'	N74°13'56"E
52	34°37'07"	265.66'	160.51'	82.79'	158.08'	S83°40'43"E
53	240°00'00"	50.00'	209.44'	—	86.60'	N40°59'16"W
54	60°00'00"	50.00'	52.36'	28.87'	50.00'	S49°00'44"W
55	34°37'07"	215.66'	130.30'	67.21'	128.33'	N83°40'43"W
56	55°15'00"	257.71'	248.51'	134.87'	238.99'	N34°52'29"E
57	240°00'00"	50.00'	209.44'	—	86.60'	N57°30'01"W
58	55°15'00"	307.71'	296.73'	161.04'	285.36'	S34°52'29"W
59	71°45'44"	182.36'	228.40'	131.92'	213.77'	S43°07'52"W
62	43°16'01"	707.14'	534.00'	280.45'	521.40'	N84°07'59"E

SIGHT DISTANCE EASEMENT

NOTE: NO VISUAL OBSTRUCTIONS (TO INCLUDE BUT NOT LIMITED TO LANDSCAPING, FENCES, OR OTHER STRUCTURES) SHALL BE ALLOWED WITHIN THE SIGHT DISTANCE EASEMENTS SHOWN ON THIS PLAT.



This sheet pertains to lots 136-161



AES, a professional corporation
 1761 Jamestown Road, Williamsburg, Va. 23185
 804-253-0040
 Engineering, Planning, Surveying

PLAT OF
FORD'S COLONY
 @ **WILLIAMSBURG**
 SECTION VII

BERKELEY DISTRICT JAMES CITY COUNTY VIRGINIA



No.	DATE	REVISION / COMMENT / NOTE	BY

Designed LCA/AES	Drawn BB
Scale 1"=100'	Date DEC. 1988
Project No. 5652	
Drawing No. 10 of 10	