

**LOT CURVE DATA**

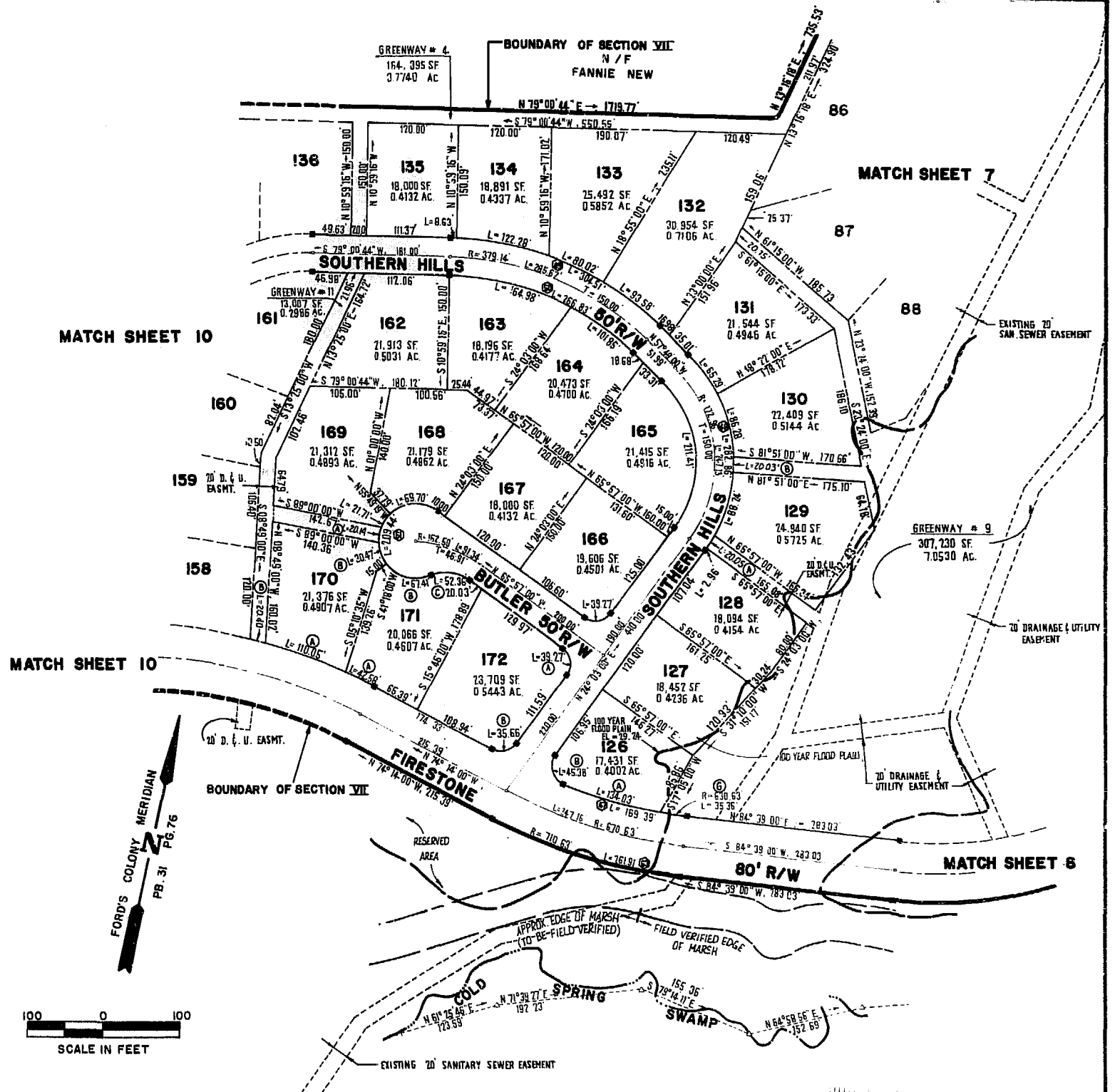
NO.	DELTA	RADIUS	LENGTH	TANGENT	CHORD	CHORD BEARING
126A	12°10'39"	630.63'	134.03'	67.27'	133.78'	N86°02'55"W
126B	104°00'36"	25.00'	45.38'	32.00'	39.40'	N27°57'18"W
128	00°51'29"	197.96'	2.96'	1.48'	2.96'	N23°37'15"E
129	25°32'18"	197.96'	88.24'	44.86'	87.51'	N04°37'09"E
130	24°58'17"	197.96'	86.28'	43.84'	85.60'	N26°26'03"W
131	18°53'48"	197.96'	65.29'	32.94'	64.99'	N48°22'06"W
132	13°16'00"	404.14'	93.58'	47.00'	93.37'	N64°27'00"W
133	11°20'41"	404.14'	80.02'	40.14'	79.89'	N76°45'20"W
134	17°20'08"	404.14'	122.78'	61.61'	121.81'	S88°54'15"W
135	01°13'25"	404.14'	6.63'	4.32'	8.63'	S79°37'26"W
163	26°41'32"	354.14'	164.98'	84.01'	163.49'	S87°38'31"E
164	16°28'44"	354.14'	101.85'	51.28'	101.50'	S66°03'22"E
165	81°52'00"	147.96'	211.41'	128.32'	193.88'	S16°53'00"E
166	90°00'00"	25.00'	39.27'	25.00'	35.36'	S69°03'00"W
168	79°52'19"	50.00'	69.70'	41.86'	64.19'	S74°06'50"W
169	24°52'55"	50.00'	21.71'	11.03'	21.54'	S82°44'13"W
170A	08°55'00"	707.14'	110.05'	55.14'	109.94'	N82°08'30"W
170B	34°55'00"	50.00'	30.47'	15.73'	30.00'	S31°14'30"E
171A	03°27'00"	707.14'	42.58'	21.30'	42.57'	N75°57'29"W
171B	77°15'00"	50.00'	67.41'	39.95'	62.42'	S87°19'30"E
171C	60°00'00"	50.00'	52.36'	28.87'	50.00'	N84°03'00"E
172A	90°00'00"	25.00'	39.27'	25.00'	35.36'	S20°57'00"E
172B	81°43'00"	25.00'	35.66'	21.62'	32.71'	S64°54'30"W

**GREENWAY CURVE DATA**

NO.	DELTA	RADIUS	LENGTH	TANGENT	CHORD	CHORD BEARING
9A	05°48'13"	197.96'	20.05'	10.03'	200.04'	N20°17'25"E
9B	05°47'55"	197.96'	20.03'	10.03'	20.03'	N11°02'57"W
9C	03°12'45"	630.63'	35.36'	17.68'	35.35'	S86°15'22"W
11A	23°04'46"	50.00'	20.14'	10.21'	20.00'	S02°14'37"E
11B	01°39'11"	707.14'	20.40'	10.20'	20.40'	N87°25'36"W

**RIGHT-OF-WAY CURVE DATA**

NO.	DELTA	RADIUS	LENGTH	TANGENT	CHORD	CHORD BEARING
47	15°23'24"	630.63'	169.39'	85.21'	168.88'	N87°39'18"W
48	81°52'00"	197.96'	282.86'	171.68'	259.40'	S16°53'00"E
49	43°10'16"	404.14'	304.51'	159.89'	297.36'	S79°24'08"E
60	43°10'16"	354.14'	266.83'	140.11'	260.57'	N79°24'08"W
61	240°00'00"	50.00'	209.44'	---	86.60'	N05°57'00"W
63	21°07'00"	710.63'	261.91'	132.46'	260.43'	N84°47'30"W



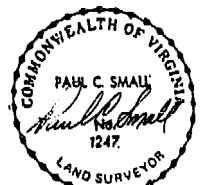
This sheet pertains to lots 126-135 and 162-172



**AES**, a professional corporation  
 1761 Jamestown Road, Williamsburg, Va. 23185  
 804-253-0040  
 Engineering, Planning, Surveying

PLAT OF  
**FORD'S COLONY**  
 @ **WILLIAMSBURG**  
 SECTION VI

BERKELEY DISTRICT      JAMES CITY COUNTY      VIRGINIA



NO.	DATE	REVISION / COMMENT / NOTE	BY

Designed LCA/AES	Drawn BB
Scale 1"=100'	Date DEC-15-98
Project No. 5652	
Drawing No. 9 of 10	

