

LOT CURVE DATA

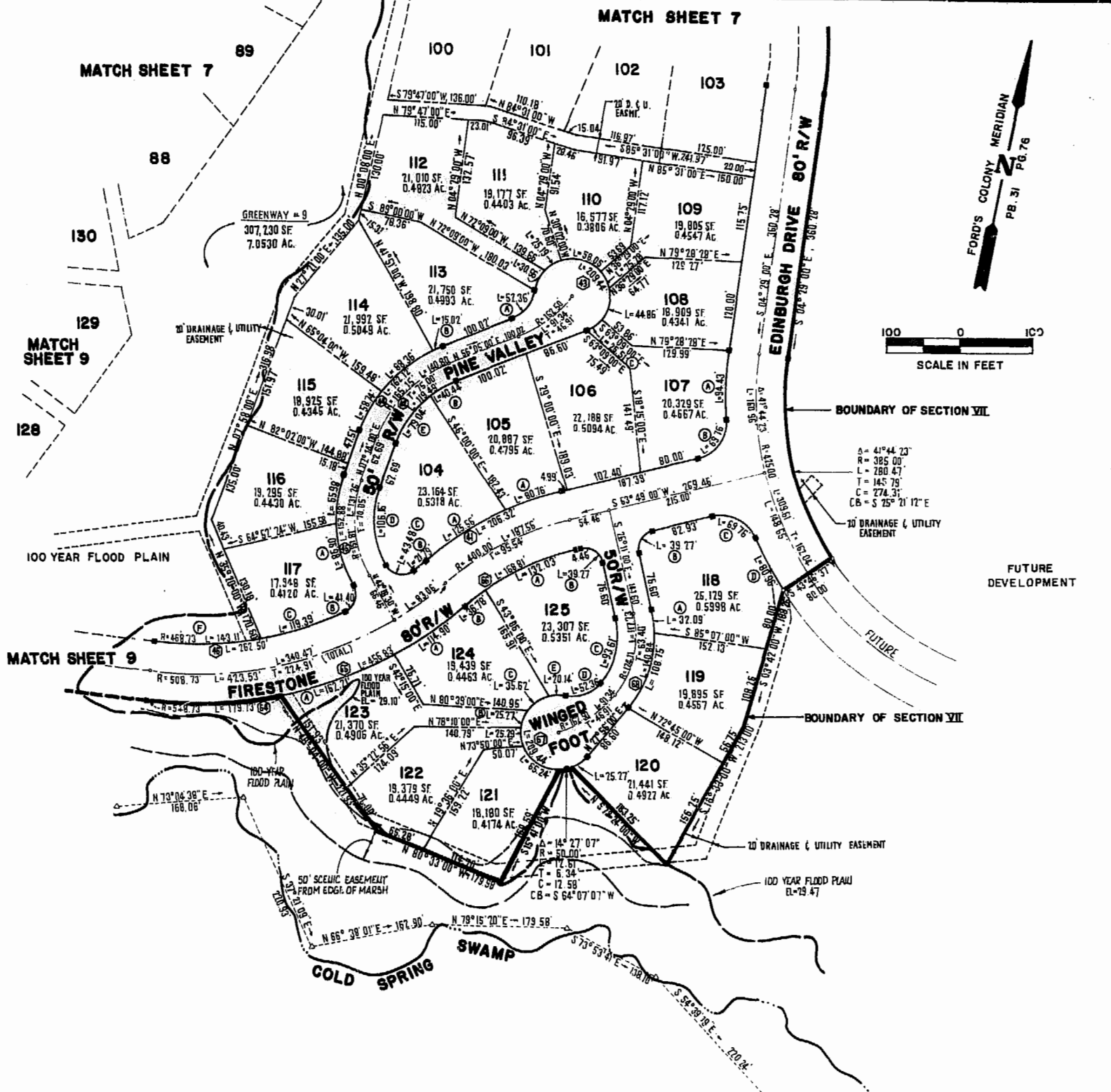
NO.	DELTA	RADIUS	LENGTH	TANGENT	CHORD	CHORD BEARING
104A	16°20'59"	440.00'	125.56'	63.21'	125.13'	S45°07'30"W
104B	02°39'50"	468.73'	21.79'	10.90'	21.79'	S38°16'55"W
104C	99°39'13"	25.00'	43.48'	29.61'	38.20'	S89°26'27"W
104D	47°57'57"	126.81'	106.16'	56.41'	103.08'	N16°44'59"W
104E	32°18'56"	140.15'	79.04'	40.60'	78.00'	N23°23'28"W
105A	10°31'01"	440.00'	80.76'	40.50'	80.65'	S58°33'30"W
105B	16°32'04"	140.15'	40.44'	20.36'	40.30'	N47°48'58"E
107A	11°38'08"	465.00'	94.43'	47.38'	94.27'	S10°18'04"E
107B	79°56'06"	50.00'	69.76'	41.91'	64.24'	S23°50'56"W
107C	29°24'00"	50.00'	25.51'	13.04'	25.24'	N41°28'00"E
108	51°24'00"	50.00'	44.86'	24.06'	43.37'	N01°09'00"E
109	28°58'00"	50.00'	25.28'	12.92'	25.01'	N39°02'00"W
110	66°31'00"	50.00'	58.05'	32.79'	54.84'	N86°44'30"W
111	28°52'06"	50.00'	25.19'	12.87'	24.93'	S45°31'57"W
112	35°00'54"	50.00'	30.56'	15.77'	30.08'	S13°35'27"W
113A	60°00'00"	50.00'	52.36'	28.87'	50.00'	S26°05'00"W
113B	04°31'29"	190.15'	15.02'	7.51'	15.01'	S53°49'16"W
114	26°37'31"	190.15'	88.36'	44.99'	87.57'	S38°14'46"W
115	17°42'00"	190.15'	58.74'	29.61'	58.51'	S16°05'00"W
116	21°22'52"	176.81'	65.98'	33.38'	65.60'	S03°27'26"E
117A	28°09'38"	176.81'	7.6.90'	44.35'	86.00'	S28°13'41"E
117B	94°52'19"	25.00'	41.40'	27.22'	36.83'	S05°07'40"W
117C	14°35'38"	468.73'	119.39'	60.02'	119.07'	S59°51'38"W
118A	12°19'51"	149.11'	32.09'	16.11'	32.03'	N20°01'04"W
118B	90°00'00"	25.00'	25.19'	12.87'	25.00'	N18°49'00"E
118C	79°56'08"	50.00'	69.76'	41.91'	64.24'	S76°12'56"E
118D	09°58'31"	465.00'	80.96'	40.58'	80.86'	S41°14'08"E
119	41°47'09"	149.11'	108.75'	56.92'	106.35'	N07°02'26"E
120	28°57'33"	50.00'	25.27'	12.91'	25.00'	N42°24'47"E
121	74°45'29"	50.00'	65.24'	38.20'	60.71'	S71°16'35"W
122	28°58'57"	50.00'	25.29'	12.92'	25.02'	S19°24'22"W
123A	16°56'12"	548.73'	162.21'	81.70'	161.62'	N57°24'55"W
123B	28°57'11"	50.00'	25.27'	12.91'	25.00'	S09°33'42"W
124A	11°59'49"	548.73'	114.90'	57.66'	114.69'	N42°56'55"E
124B	05°51'11"	360.00'	36.78'	18.40'	36.76'	N39°21'35"E
124C	40°49'13"	50.00'	35.62'	18.60'	34.87'	S44°26'53"W
125A	21°00'49"	360.00'	132.03'	66.77'	131.29'	N53°18'35"E
125B	90°00'00"	25.00'	39.27'	25.00'	35.36'	S71°11'00"E
125C	54°07'00"	50.00'	93.61'	50.63'	90.17'	S00°52'30"W
125D	60°00'00"	50.00'	52.36'	28.87'	50.00'	S57°56'00"W
125E	23°04'30"	50.00'	20.14'	10.21'	20.00'	S76°23'45"W

GREENWAYS CURVE DATA

NO.	DELTA	RADIUS	LENGTH	TANGENT	CHORD	CHORD BEARING
9F	17°29'33"	468.73'	143.11'	72.11'	142.55'	S75°54'13"W

RIGHT-OF-WAY CURVE DATA

NO.	DELTA	RADIUS	LENGTH	TANGENT	CHORD	CHORD BEARING
41	26°52'00"	440.00'	206.32'	105.09'	204.44'	N50°23'00"E
42	48°51'00"	140.15'	119.49'	63.65'	115.90'	S31°39'30"W
43	240°00'00"	50.00'	209.44'	86.60'	86.60'	S63°55'00"E
44	48°51'00"	190.15'	162.12'	86.35'	157.25'	N31°39'30"E
45	49°32'29"	176.81'	152.88'	81.59'	148.16'	N17°32'15"W
46	32°05'11"	468.73'	262.50'	134.79'	259.08'	N68°36'25"E
64	18°45'59"	548.73'	179.73'	90.68'	178.93'	S75°16'01"W
65	47°42'00"	548.73'	456.83'	242.59'	443.75'	S60°48'00"W
66	26°52'00"	360.00'	168.81'	85.99'	167.27'	S50°23'00"W
67	240°00'00"	50.00'	209.44'	86.60'	86.60'	N32°04'00"W
68	54°07'00"	149.11'	140.84'	76.17'	135.66'	S00°52'30"W



This sheet pertains to lots 104-125



**AES**, a professional corporation  
 1761 Jamestown Road, Williamsburg, Va. 23185  
 804-253-0040  
 Engineering, Planning, Surveying

PLAT OF  
**FORD'S COLONY**  
 @ **WILLIAMSBURG**  
 SECTION VII

BERKELEY DISTRICT      JAMES CITY COUNTY      VIRGINIA



NO.	DATE	REVISION / COMMENT / NOTE	BY

Designed LCA/AES	Drawn BB
Scale 1"=100'	Date DEC.1988
Project No. <b>5652</b>	
Drawing No. <b>8 of 10</b>	

