

LOT CURVE DATA

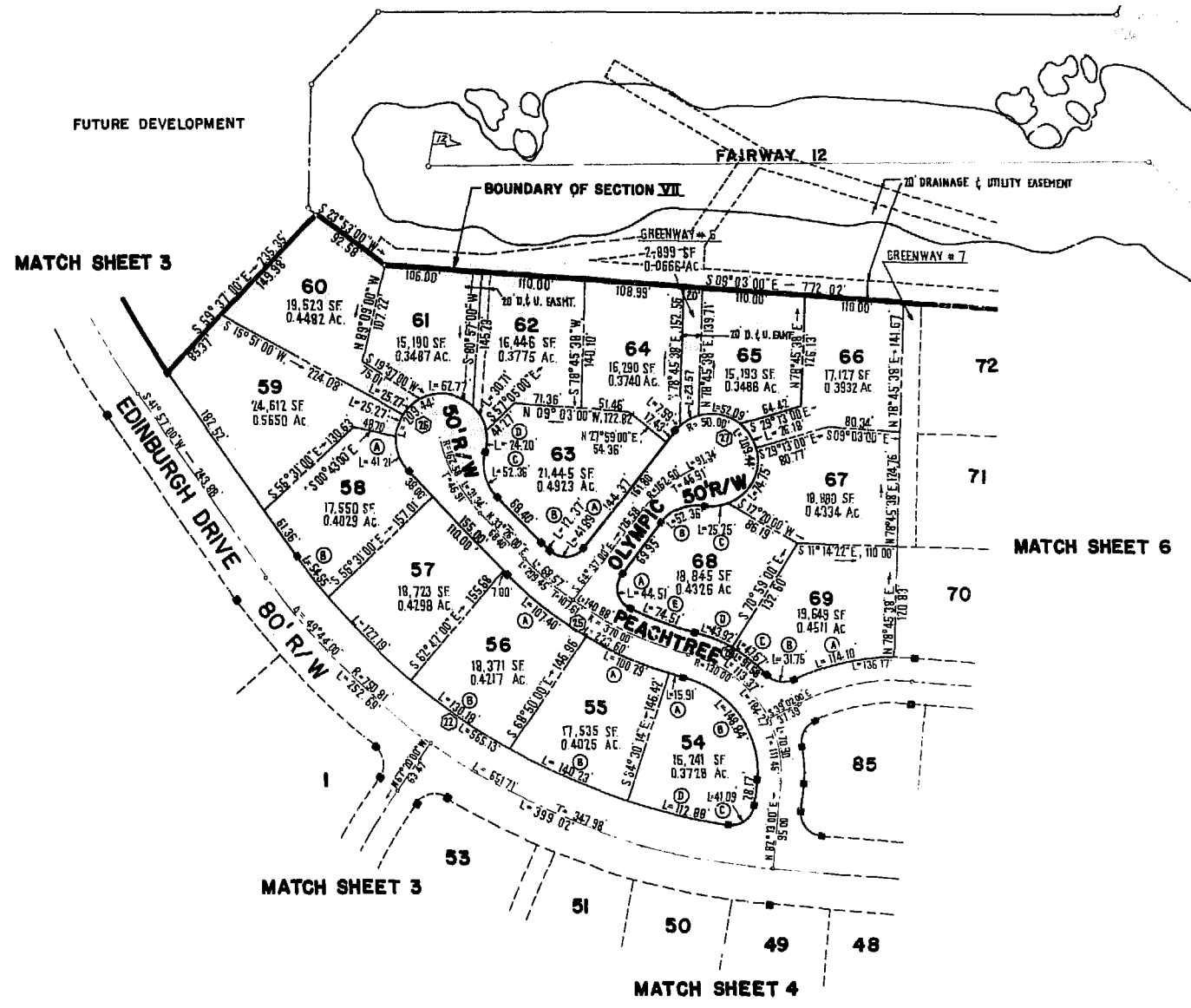
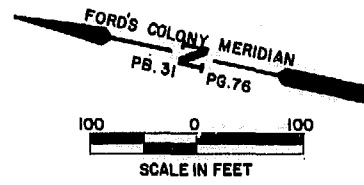
NO.	DELTA	RADIUS	LENGTH	TANGENT	CHORD	CHORD BEARING
54A	02°18'30"	395.00'	15.91'	7.96'	15.91'	S02°09'15"W
54B	81°13'00"	105.00'	148.84'	90.02'	136.69'	S41°36'30"W
54C	94°10'51"	25.00'	41.09'	26.39'	36.62'	N50°41'34"W
54D	09°05'55"	710.81'	112.88'	56.56'	112.76'	N00°56'49"E
55A	14°32'49"	395.00'	100.29'	50.41'	100.02'	S10°34'54"W
55B	11°18'12"	710.81'	140.23'	70.34'	140.00'	N11°08'52"W
56A	15°34'41"	395.00'	107.40'	54.03'	107.07'	S25°38'39"
56B	10°29'37"	710.81'	130.18'	65.27'	130.00'	N22°02'46"E
57	10°15'07"	710.81'	127.19'	63.76'	127.02'	N32°25'08"E
58A	47°13'40"	50.00'	41.21'	21.86'	40.06'	S57°02'50"W
58B	04°24'18"	710.81'	54.65'	27.34'	54.64'	N39°44'51"E
59	28°57'20"	50.00'	25.27'	12.91'	25.00'	N55°54'20"W
60	28°57'20"	50.00'	25.27'	12.91'	25.00'	N55°54'20"W
61	71°56'02"	50.00'	62.77'	36.28'	58.73'	N05°27'39"W
62	35°11'35"	50.00'	30.71'	15.86'	30.23'	N48°06'10"E
63A	95°59'43"	25.00'	41.89'	27.76'	37.16'	N16°37'09"W
63B	02°03'17"	345.00'	12.37'	6.19'	12.37'	N32°24'22"E
63C	60°00'00"	50.00'	52.36'	28.87'	50.00'	N63°26'00"E
63D	27°44'03"	50.00'	24.20'	12.34'	23.97'	N79°33'59"E
64	08°42'11"	50.00'	7.59'	3.80'	7.59'	N60°15'54"W
65	59°41'29"	50.00'	52.09'	28.69'	49.77'	N00°56'47"E
66	29°59'56"	50.00'	26.18'	13.40'	25.88'	N45°47'30"E
67	85°39'37"	50.00'	74.75'	46.35'	67.98'	S76°22'44"E
68A	102°00'30"	50.00'	44.51'	30.88'	25.00'	N64°22'45"E
68B	60°00'00"	50.00'	52.36'	28.87'	50.00'	S34°37'00"E
68C	26°55'56"	50.00'	25.25'	12.90'	24.98'	S19°04'58"E
68D	16°14'08"	155.00'	43.92'	22.11'	43.77'	N09°07'04"E
68E	12°22'30"	345.00'	74.51'	37.40'	74.37'	N07°11'15"W
69A	25°14'55"	258.93'	114.10'	57.99'	113.18'	N25°17'27"W
69B	72°46'19"	25.00'	31.75'	18.42'	29.66'	N03°11'44"W
69C	17°37'17"	155.00'	47.67'	24.03'	47.48'	N26°02'46"E

HIGHWAY CURVE DATA

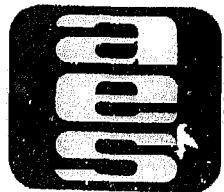
NO.	DELTA	RADIUS	LENGTH	TANGENT	CHORD	CHORD BEARING
22	45°33'09"	710.81'	565.13'	298.45'	550.35'	N19°10'26"E
25	32°26'00"	395.00'	223.60'	114.88'	220.62'	N17°13'00"E
26	240°00'00"	50.00'	209.44'	---	86.60'	S26°34'00"E
27	240°00'00"	50.00'	209.44'	---	86.60'	S55°23'00"W
28	33°51'25"	155.00'	91.59'	47.18'	90.27'	N17°55'42"E

GREENWAY CURVE DATA

NO.	DELTA	RADIUS	LENGTH	TANGENT	CHORD	CHORD BEARING
6	27°00'51"	50.00'	23.57'	12.01'	23.36'	N42°24'23"W

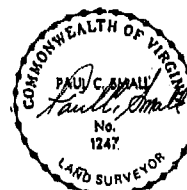


This sheet pertains to lots 54-69



AES, a professional corporation
 1781 Jamestown Road, Williamsburg, Va. 23185
 804-263-0040
 Engineering, Planning, Surveying

PLAT OF FORD'S COLONY @ WILLIAMSBURG SECTION VII
 BERKELEY DISTRICT JAMES CITY COUNTY VIRGINIA



NO.	DATE	REVISION / COMMENT / NOTE	BY

Designed LCA/AES	Drawn BB
Scale 1"=100'	Date DEC. 1988
Project No. 5652	
Drawing No. 5 of 10	

