

RIGHT-OF-WAY CURVE DATA

NO.	DELTA	RADIUS	LENGTH	TANGENT	CHORD	CHORD BEARING
11	36°45'06"	260.55'	167.13'	86.55'	164.28'	N02°14'27"W
12	66°45'00"	160.00'	186.40'	105.40'	176.04'	N12°45'30"E
13	233°15'25"	50.00'	203.56'	—	89.39'	N57°45'42"E
14	61°03'51"	195.25'	208.39'	115.16'	198.38'	N89°23'55"W
15	232°20'33"	50.00'	202.76'	—	89.75'	N79°39'10"W
16	21°45'57"	387.50'	147.20'	74.50'	146.32'	S26°42'02"E
17	55°04'59"	210.00'	201.89'	109.51'	194.20'	S06°55'30"W
19	26°56'10"	790.81'	371.78'	189.39'	368.36'	S05°41'08"W
20	12°55'31"	878.82'	198.25'	99.55'	197.83'	S14°14'45"E
21	12°55'31"	798.82'	180.20'	90.49'	179.82'	N14°14'45"W

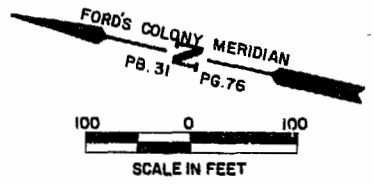
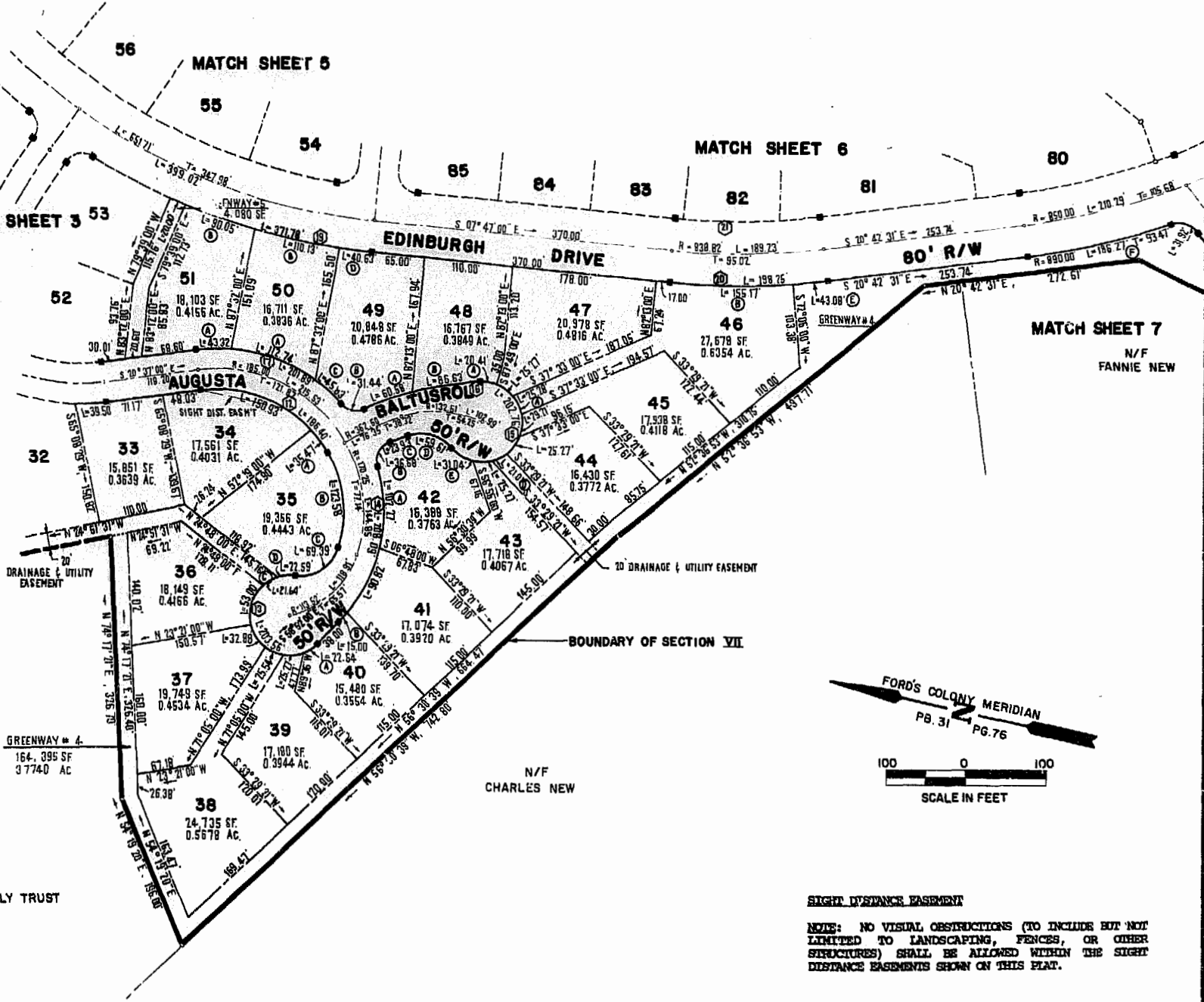
LOT CURVE DATA

NO.	DELTA	RADIUS	LENGTH	TANGENT	CHORD	CHORD BEARING
33	08°41'14"	260.55'	39.50'	19.79'	39.47'	S16°16'23"E
34	54°02'57"	160.00'	150.93'	81.61'	145.40'	S06°24'29"W
35A	12°42'03"	160.00'	35.47'	17.81'	35.39'	S39°46'58"W
35B	48°44'51"	145.25'	123.58'	65.81'	119.89'	S70°30'29"W
35C	79°30'34"	50.00'	69.39'	41.59'	63.95'	N45°21'52"W
35D	25°53'14"	50.00'	22.59'	11.49'	22.40'	N18°33'12"W
36	60°44'20"	50.00'	53.00'	29.30'	50.56'	N86°39'33"W
37	37°40'23"	50.00'	32.88'	17.06'	32.29'	S44°08'05"W
38	29°15'52"	50.00'	25.54'	13.05'	25.26'	S10°39'58"W
39	28°57'18"	50.00'	25.27'	12.91'	25.00'	S18°26'38"E
40A	25°56'43"	50.00'	22.64'	11.52'	22.45'	S45°53'38"E
40B	04°24'05"	195.25'	15.00'	7.50'	15.00'	S61°04'02"E
41	26°39'05"	195.25'	90.82'	46.25'	90.01'	S76°35'38"E
42A	30°00'40"	195.25'	102.27'	52.34'	101.11'	N73°04'29"E
42B	84°04'05"	25.00'	36.68'	22.54'	33.48'	S77°53'48"E
42C	04°03'50"	337.50'	23.94'	11.97'	23.93'	N33°49'51"W
42D	68°28'40"	50.00'	59.61'	33.92'	56.14'	S02°21'24"W
42E	35°34'24"	50.00'	31.04'	16.04'	30.55'	S18°43'32"W
43	28°57'20"	50.00'	25.27'	12.91'	25.00'	S13°32'19"E
44	28°57'12"	50.00'	25.27'	12.91'	25.00'	S66°33'13"E
45	73°28'24"	50.01'	29.21'	15.04'	28.80'	N82°13'14"E
46A	28°57'39"	50.01'	25.28'	12.91'	25.01'	N50°59'58"E
46B	10°07'00"	878.82'	155.17'	77.79'	154.97'	S12°50'30"E
47	28°57'18"	50.00'	25.27'	12.91'	25.00'	N22°02'22"E
48A	23°23'15"	50.00'	20.41'	10.35'	20.27'	N04°07'54"W
48B	12°48'31"	387.50'	86.63'	43.49'	86.45'	N22°13'19"W
49A	08°57'26"	387.50'	60.58'	30.35'	60.52'	N33°06'18"W
49B	72°03'00"	25.00'	31.44'	18.18'	29.41'	N01°33'31"W
49C	12°30'18"	210.00'	45.83'	23.01'	45.74'	N26°12'50"E
49D	02°56'37"	790.81'	40.63'	20.32'	40.62'	S06°18'42"E
50A	30°45'30"	210.00'	112.74'	57.76'	111.39'	N06°34'56"E
50B	07°58'46"	790.81'	110.13'	55.16'	110.04'	S00°51'01"E
51A	11°49'11"	210.00'	43.32'	21.74'	43.24'	N14°42'25"W
51B	06°31'28"	790.81'	90.05'	45.07'	90.00'	S06°24'06"W

GREENWAY CURVE DATA

NO.	DELTA	RADIUS	LENGTH	TANGENT	CHORD	CHORD BEARING
4C	24°47'34"	50.00'	21.64'	10.99'	21.47'	N43°33'36"W
4D	24°04'27"	50.00'	21.01'	10.66'	20.85'	S40°03'13"E
5	01°26'57"	790.81'	20.00'	10.00'	20.00'	S10°23'18"W
4E	02°48'31"	878.82'	43.08'	21.54'	43.07'	S19°18'16"E
4F	11°59'28"	890.00'	186.27'	93.47'	185.93'	S26°42'15"E

N/F THE WILFORD FAMILY TRUST



SIGHT DISTANCE EASEMENT
 NOTE: NO VISUAL OBSTRUCTIONS (TO INCLUDE BUT NOT LIMITED TO LANDSCAPING, FENCES, OR OTHER STRUCTURES) SHALL BE ALLOWED WITHIN THE SIGHT DISTANCE EASEMENTS SHOWN ON THIS PLAT.

This sheet pertains to lots 33-51



AES, a professional corporation
 1781 Jamestown Road, Williamsburg, Va. 23186
 804-253-0040
 Engineering, Planning, Surveying

PLAT OF
FORD'S COLONY
 @ **WILLIAMSBURG**
 SECTION VII
 BERKELEY DISTRICT JAMES CITY COUNTY VIRGINIA



NO.	DATE	REVISION / COMMENT / NOTE	BY

Designed LCA/AES	Drawn BB
Scale 1"=100'	Date DEC. 1988
Project No. 5652	
Drawing No. 4 of 10	

