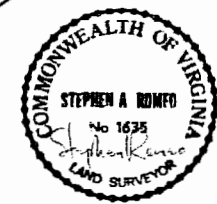
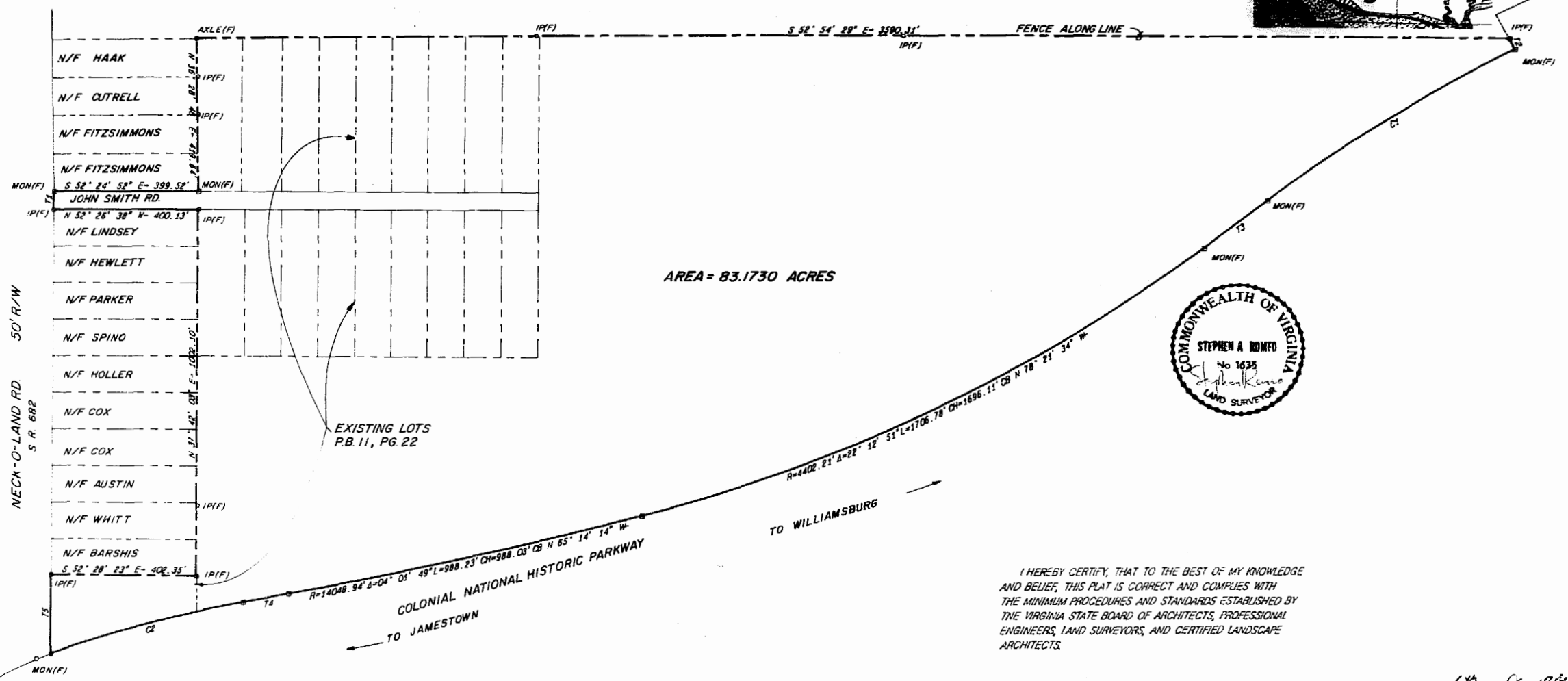




RECORD NORTH  
P.B. 9, PG. 39

N/F  
MILL CREEK LANDING, LTD.



I HEREBY CERTIFY, THAT TO THE BEST OF MY KNOWLEDGE AND BELIEF, THIS PLAT IS CORRECT AND COMPLIES WITH THE MINIMUM PROCEDURES AND STANDARDS ESTABLISHED BY THE VIRGINIA STATE BOARD OF ARCHITECTS, PROFESSIONAL ENGINEERS, LAND SURVEYORS, AND CERTIFIED LANDSCAPE ARCHITECTS.

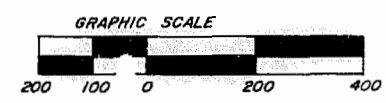
STATE OF VIRGINIA, COUNTY OF JAMES CITY  
 In the clerk's office of the circuit court of  
 the County of James City this 6 day of  
Jan, 1989. The map shows  
 hereon was prepared and admitted to the record as  
 the true correct.  
 Teste: William Stewart Clerk  
 File Book: 52 Page: 17

Recorded 6th day of Jan 1989  
 in  
 Book No. 422 Page 104  
William Stewart

PLAT OF PROPERTY OF  
 BENSON PHILLIPS CO. INC.  
 D.B. 30, PG. 261

LABEL	BEARING	DISTANCE	LABEL	RADIUS	CENTRAL ANGLE	ARC LENGTH	CHORD LENGTH	CHORD BEARING
T1	N 38° 12' 53" E	49.92	C1	4638.87	09° 55' 18"	804.65	803.64	N 84° 29' 51" N
T2	S 10° 30' 00" N	33.14	C2	3474.52	09° 08' 48"	554.67	554.08	N 67° 47' 44" N
T3	N 88° 28' 00" N	217.83						
T4	N 63° 13' 20" N	127.10						
T5	N 37° 49' 39" E	217.09						

REFERENCES  
 P.B. 11, PG. 22  
 P.B. 27, PG. 43



JAMESTOWN DISTRICT  
 COUNTY OF JAMES CITY, VIRGINIA  
 DATE: 29 DECEMBER 1988 SCALE: 1" = 200'  
 Langley and McDonald, P.C.  
 ENGINEERS PLANNERS SURVEYORS  
 VIRGINIA BEACH AND WILLIAMSBURG, VIRGINIA