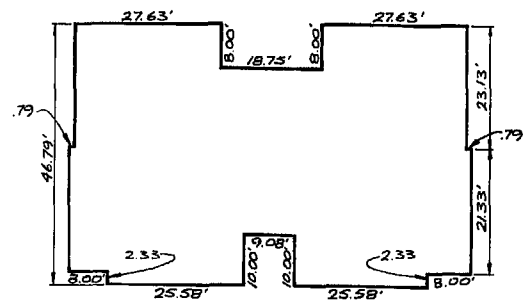
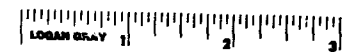


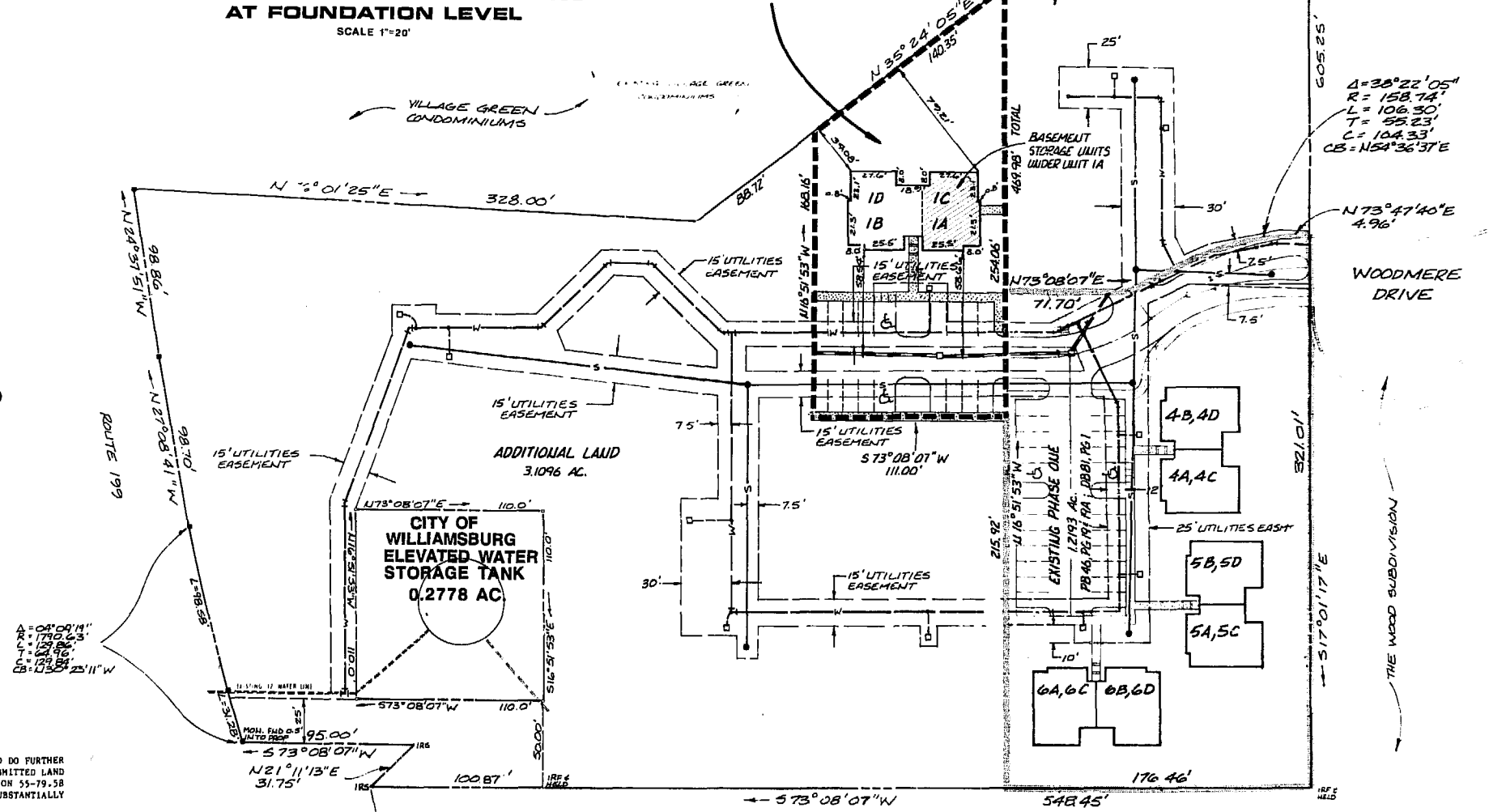


**LOCATION MAP**  
SCALE: 1"=2000'



**TYPICAL EXTERIOR DIMENSIONS AT FOUNDATION LEVEL**  
SCALE 1"=20'

**PHASE II**  
**0.5380 Ac.**



**NOTE: ALL UTILITY EASEMENTS SHOWN HEREON ARE HEREBY DEDICATED TO THE CITY OF WILLIAMSBURG**  
(SEE "PLAT OF DRAINAGE / UTILITIES EASEMENTS", DATED AUG. 1987) DB 81, PG 423

--- DENOTES PHASE BOUNDARY  
--- DENOTES EXISTING PHASE BOUNDARY

A = 04° 09' 14"  
R = 1750.63'  
L = 121.86'  
T = 128.96'  
C = 128.84'  
CB = N 35° 25' 11" W

WE DO HEREBY CERTIFY THAT WE HAVE SURVEYED THE SUBMITTED LAND AND DO FURTHER CERTIFY THAT THIS PLAT SHOWING LOCATION AND DIMENSIONS OF THE SUBMITTED LAND IS ACCURATE AND THE PLAT COMPLIES WITH THE PROVISIONS OF SECTION 55-79.58 (a) OF THE CODE OF VIRGINIA AS AMENDED. ALL UNITS HAVE BEEN SUBSTANTIALLY COMPLETED.

AES, A PROFESSIONAL CORPORATION

BY: G.T. WILSON, JR.  
G.T. WILSON, JR. C.L.S.

3:42 p.m.  
Recorded: 23rd day of Nov. 1988  
in Book 86 pages 476  
Noted and Clerk  
L. Noun (2/1/88) Dep. Clerk  
REF: PB 21, P. 40  
VDH ORN-CAT-101, PE 101  
SV-301, C-301, SHEETS 7, 8



**AES**, a professional corporation  
1761 Jamestown Road, Williamsburg, Va. 23185  
804-253-0040  
Engineering, Planning, Surveying

**CONDOMINIUM PLAT**  
**THE WOODLANDS A CONDOMINIUM**  
**PHASE II**  
OWNER/DEVELOPER : S.W.N. ASSOCIATES  
CITY OF WILLIAMSBURG VIRGINIA



No.	DATE	REVISION / COMMENT / NOTE	BY

Designed GAM	Drawn GSB
Scale 1"=50'	Date JULY, 1988
Project No. <b>6119</b>	
Drawing No. <b>EXHIBIT B</b>	

