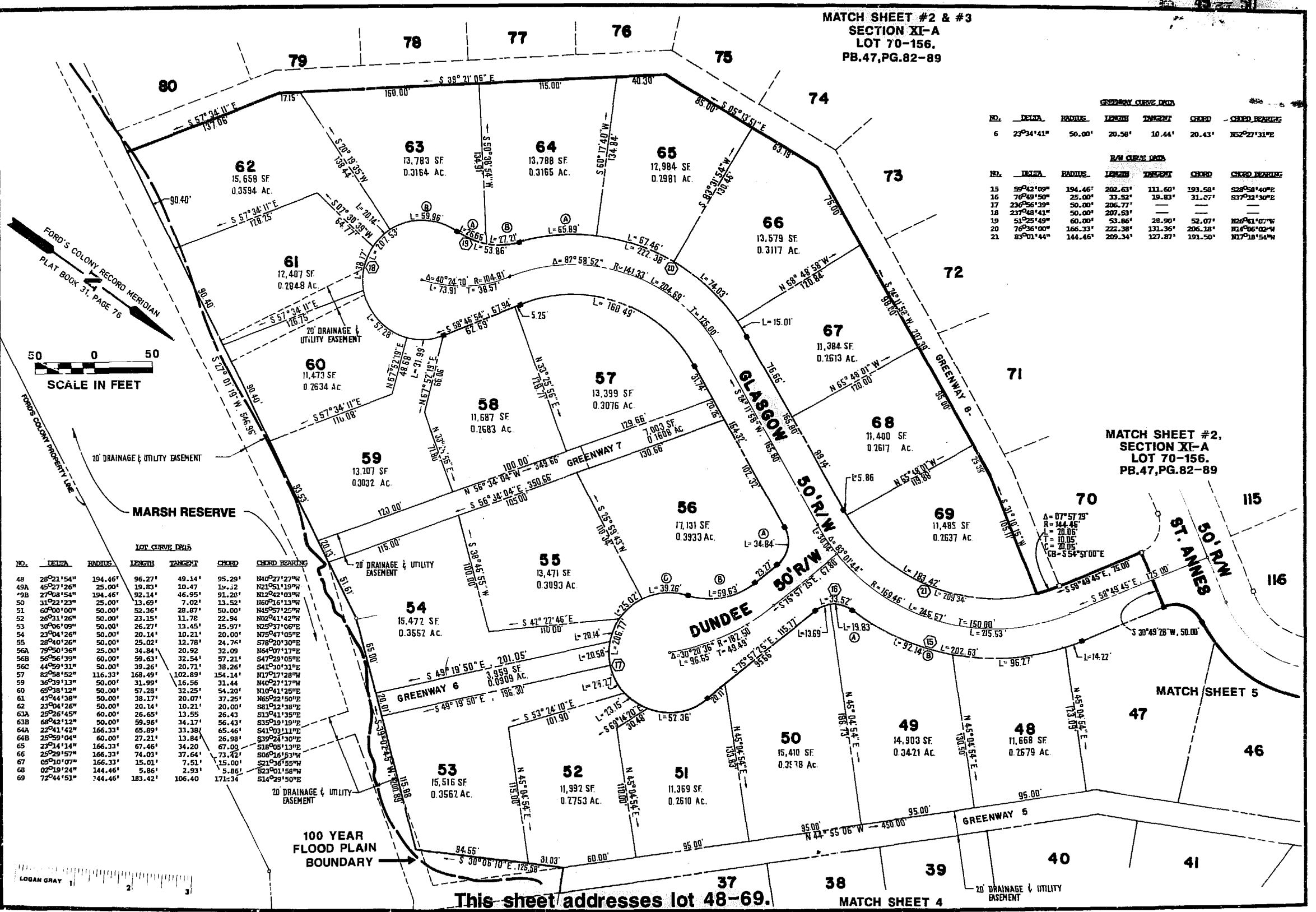


MATCH SHEET #2 & #3
SECTION XI-A
LOT 70-156.
PB.47,PG.82-89



GREENWAY CURVE DATA						
NO.	DELTA	RADIUS	LENGTH	TANGENT	CHORD	CHORD BEARING
6	23°34'41"	50.00'	20.58'	10.44'	20.43'	N52°27'31"E

R/W CURVE DATA						
NO.	DELTA	RADIUS	LENGTH	TANGENT	CHORD	CHORD BEARING
15	59°42'09"	194.46'	292.63'	111.60'	193.58'	S28°58'40"E
16	76°49'50"	25.00'	33.52'	19.83'	31.77'	S37°32'30"E
17	23°56'39"	50.00'	206.77'	—	—	—
18	237°48'41"	50.00'	207.53'	—	—	—
19	51°25'49"	60.00'	53.86'	28.90'	52.07'	N26°11'07"W
20	76°36'00"	166.33'	222.38'	131.36'	206.18'	N16°06'02"W
21	83°01'44"	144.46'	209.34'	127.87'	191.50'	N17°18'54"W



LOT CURVE DATA

NO.	DELTA	RADIUS	LENGTH	TANGENT	CHORD	CHORD BEARING
48	28°22'54"	194.46'	96.27'	49.14'	95.29'	N40°27'27"W
49A	45°27'26"	25.00'	19.83'	10.47'	19.42'	N21°51'19"W
50B	27°08'54"	194.46'	92.14'	46.95'	91.28'	N12°42'03"W
50	31°22'23"	25.00'	13.69'	7.02'	13.52'	N60°16'13"W
51	60°00'00"	50.00'	52.36'	28.87'	50.00'	N45°57'25"W
52	26°31'26"	50.00'	23.15'	11.78'	22.94'	N02°41'42"W
53	30°06'09"	50.00'	26.27'	13.45'	25.97'	N02°37'06"E
54	23°04'26"	50.00'	20.14'	10.21'	20.00'	N75°47'05"E
55	28°40'26"	50.00'	25.02'	12.78'	24.76'	S78°20'30"E
56A	79°50'36"	25.00'	34.84'	20.82'	32.09'	N64°07'17"E
56B	56°56'39"	60.00'	59.63'	32.54'	57.21'	S47°29'05"E
56C	44°59'31"	50.00'	39.26'	20.71'	38.26'	S41°30'31"E
57	82°58'52"	116.33'	168.49'	102.89'	154.14'	N17°17'28"W
59	36°39'13"	50.00'	31.99'	16.56'	31.44'	N40°27'17"W
60	65°38'12"	50.00'	57.28'	32.25'	54.20'	N10°41'25"E
61	43°44'38"	50.00'	38.17'	20.07'	37.25'	N65°22'50"E
62	23°04'26"	50.00'	20.14'	10.21'	20.00'	S81°12'38"E
63A	25°26'45"	60.00'	26.65'	13.55'	26.43'	S13°41'35"E
63B	68°42'12"	50.00'	59.96'	34.17'	56.43'	S19°19'19"E
64A	22°41'42"	166.33'	65.89'	33.38'	65.46'	S41°03'11"E
64B	25°59'04"	60.00'	27.21'	13.84'	26.98'	S39°24'30"E
65	23°14'14"	166.33'	67.46'	34.20'	67.00'	S18°05'13"E
66	25°29'57"	166.33'	74.03'	37.64'	73.42'	S06°16'53"W
67	05°10'07"	166.33'	15.03'	7.51'	15.00'	S21°16'55"W
68	02°19'24"	144.46'	5.86'	2.93'	5.85'	S23°01'58"W
69	72°44'51"	144.46'	183.42'	106.40'	171.34'	S14°29'50"E

MATCH SHEET #2,
SECTION XI-A
LOT 70-156.
PB.47,PG.82-89

LOT CURVE DATA

NO.	DELTA	RADIUS	LENGTH	TANGENT	CHORD	CHORD BEARING
70	107°57'25"	144.46'	202.63'	111.60'	193.58'	S28°58'40"E
71	76°49'50"	25.00'	33.52'	19.83'	31.77'	S37°32'30"E
72	23°56'39"	50.00'	206.77'	—	—	—
73	237°48'41"	50.00'	207.53'	—	—	—
74	51°25'49"	60.00'	53.86'	28.90'	52.07'	N26°11'07"W
75	76°36'00"	166.33'	222.38'	131.36'	206.18'	N16°06'02"W
76	83°01'44"	144.46'	209.34'	127.87'	191.50'	N17°18'54"W

This sheet addresses lot 48-69.



AES, a professional corporation
1761 Jamestown Road, Williamsburg, Va. 23185
804-253-0040
Engineering, Planning, Surveying

PLAT OF
FORD'S COLONY
@ **WILLIAMSBURG**
SECTION XI-A
LOT 1 TO LOT 69
BERKELEY DISTRICT JAMES CITY COUNTY VIRGINIA



NO.	DATE	REVISION / COMMENT / NOTE	BY
1	9/7/1988	DESIGNED	LCA/AES
2	9/7/1988	DRAWN	BB
3	9/7/1988	SCALE	1"=50'
4	9/7/1988	PROJECT NO.	5652
5	9/7/1988	DRAWING NO.	6 of 6



PB 480 50