

LOT CURVE DATA

NO.	DELTA	RADIUS	LENGTH	TANGENT	CHORD	CHORD BEARING
1	90°00'00"	25.00'	39.27'	25.00'	35.36'	N74°09'28"W
30	129°24'32"	88.43'	199.72'	187.10'	159.89'	N03°51'43"W
40	38°59'54"	138.42'	94.22'	49.02'	92.41'	S46°58'36"E
41	28°19'59"	138.42'	68.45'	34.94'	67.76'	S13°18'40"E
42	13°39'27"	138.42'	33.00'	16.58'	32.92'	S07°41'03"W
43	22°55'04"	138.42'	55.37'	28.06'	55.00'	S25°58'18"W
44A	90°00'00"	25.00'	39.27'	25.00'	35.36'	S15°50'32"W
44B	23°24'42"	138.42'	56.56'	28.68'	56.17'	S49°08'11"W
45	15°02'56"	116.11'	30.50'	15.34'	30.41'	N40°13'27"W
46	50°14'17"	116.11'	101.81'	51.44'	98.58'	N07°34'50"W
47A	04°11'21"	194.45'	14.22'	7.11'	14.21'	N56°44'04"W
47B	86°14'55"	25.00'	37.63'	23.41'	34.18'	N15°42'17"W
47C	09°52'52"	116.11'	20.02'	10.04'	20.00'	N22°28'44"W

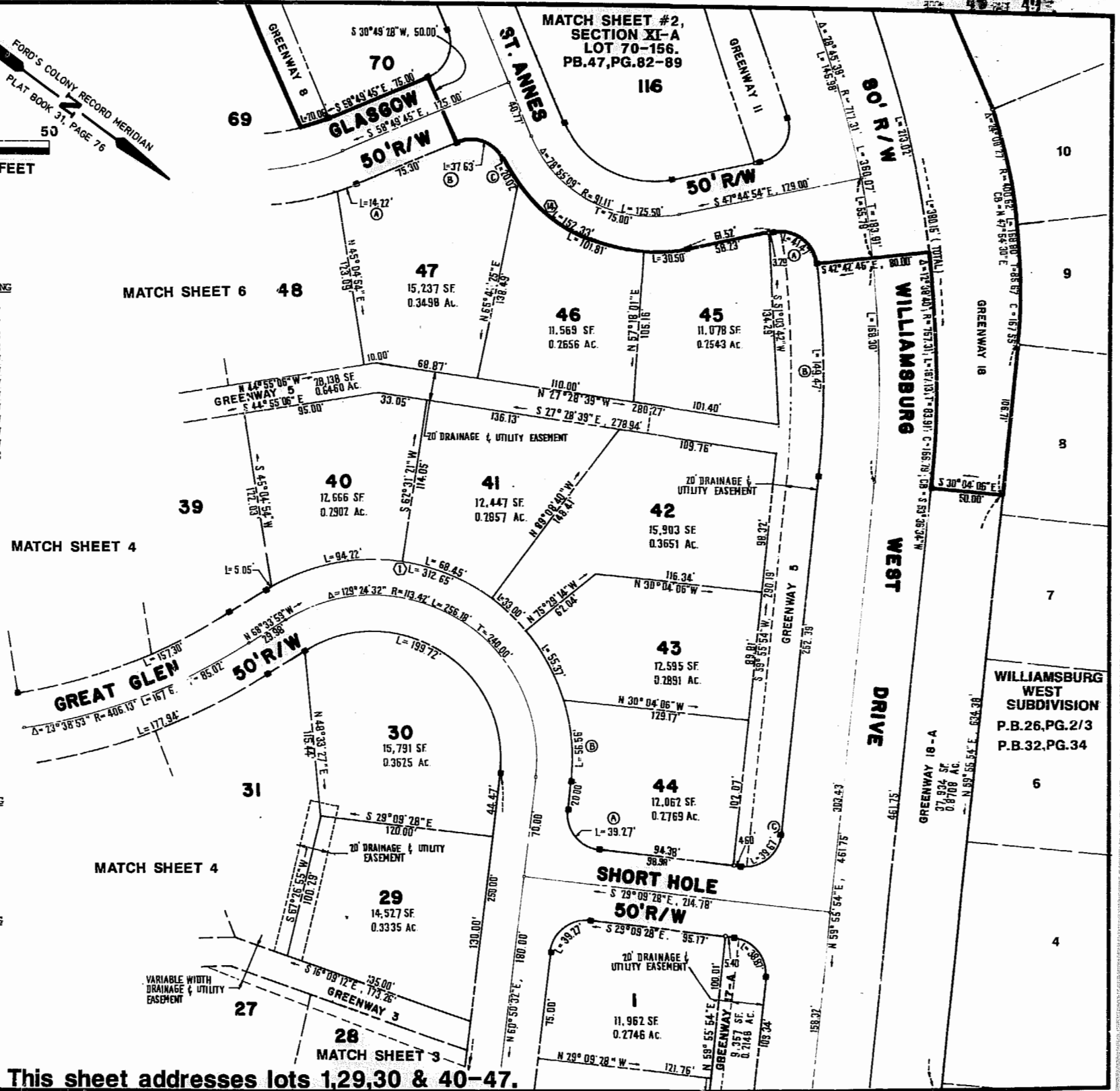
GREENWAY CURVE DATA

NO.	DELTA	RADIUS	LENGTH	TANGENT	CHORD	CHORD BEARING
5A	95°02'08"	25.00'	41.47'	27.30'	36.87'	N00°13'50"W
5B	12°38'40"	677.31'	149.47'	75.04'	149.17'	N53°36'34"E
5C	90°54'39"	25.00'	39.67'	25.40'	35.64'	S74°36'47"E
17-A	89°05'21"	25.00'	38.87'	24.61'	35.07'	N15°23'13"E

R/W CURVE DATA

NO.	DELTA	RADIUS	LENGTH	TANGENT	CHORD	CHORD BEARING
1	129°24'32"	138.42'	312.65'	292.90'	250.30'	S03°51'43"E
14	75°10'05"	116.11'	152.33'	89.37'	141.64'	S10°09'52"E

This sheet addresses lots 1,29,30 & 40-47.



AES, a professional corporation
 1761 Jamestown Road, Williamsburg, Va. 23185
 804-253-0040
 Engineering, Planning, Surveying

PLAT OF
FORD'S COLONY
 @ **WILLIAMSBURG**
 SECTION XI-A
 LOT 1 TO LOT 69
 BERKELEY DISTRICT JAMES CITY COUNTY VIRGINIA



NO.	DATE	REVISION / COMMENT / NOTE	BY

Designed LCA/AES	Drawn BB
Scale 1"=50'	Date 9/7/988
Project No. 5652	
Drawing No. 5 of 6	



RP 49 49