

LOT CURVE DATA

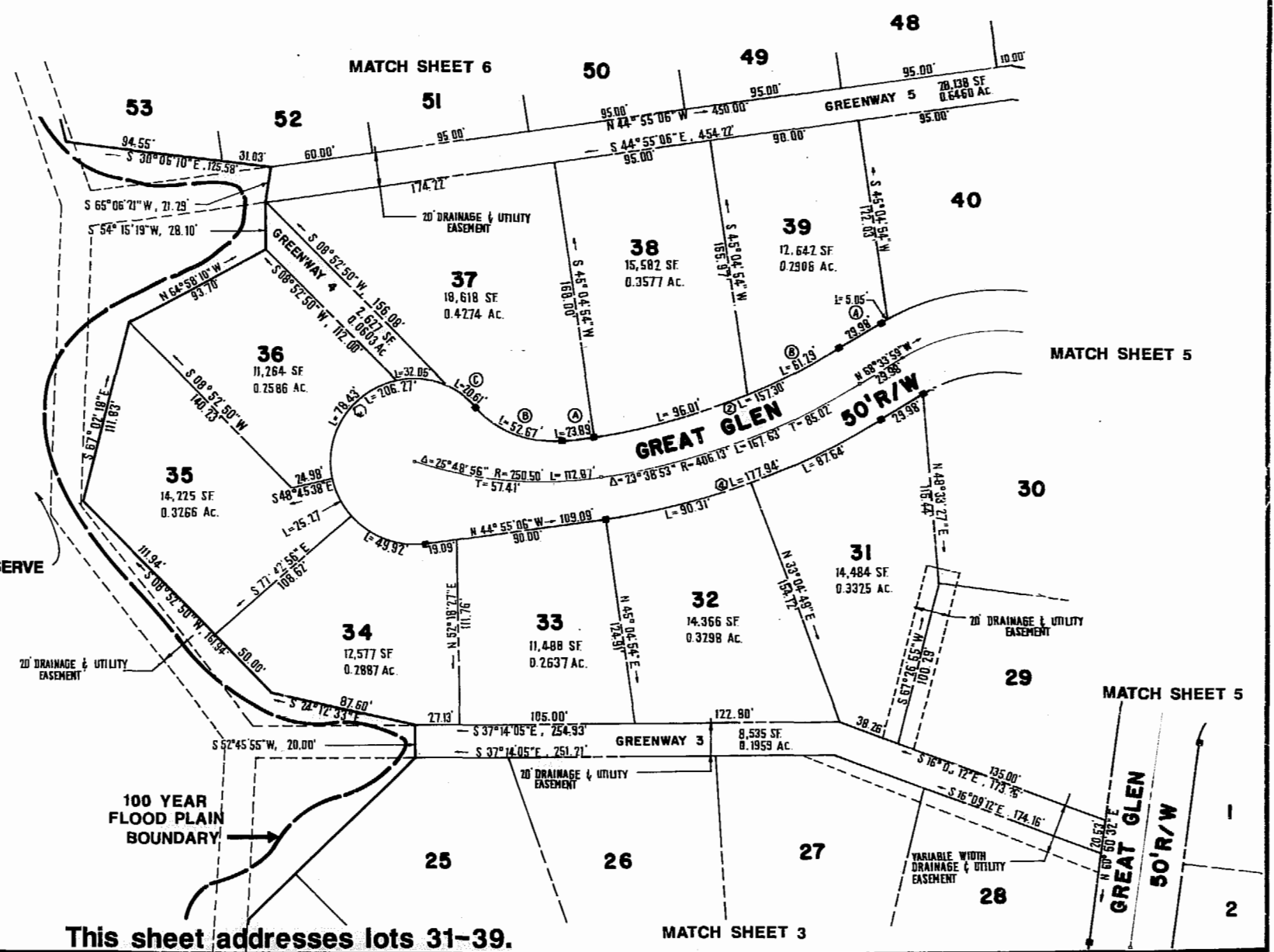
NO.	DELTA	RADIUS	LENGTH	TANGENT	CHORD	CHORD BEARING
31	11°38'49"	431.13'	87.64'	43.97'	87.49'	N62°44'35"W
32	12°00'04"	431.13'	90.31'	45.32'	90.14'	N50°55'08"W
34	57°12'11"	50.00'	49.92'	27.26'	47.87'	N16°19'01"W
35	28°57'18"	50.00'	25.27'	12.91'	25.00'	N26°45'43"E
36	86°52'07"	50.00'	78.43'	49.89'	70.63'	N86°10'26"E
37A	06°04'14"	225.50'	23.89'	11.96'	23.88'	S41°52'58"E
37B	50°17'42"	60.00'	52.67'	28.17'	50.99'	S13°42'01"E
37C	23°36'52"	50.00'	20.61'	10.45'	20.46'	S00°21'36"E
38	14°26'01"	381.13'	96.01'	48.26'	95.76'	S52°08'07"E
39A	02°05'27"	138.43'	5.05'	2.53'	5.05'	S67°31'17"E
39B	09°12'52"	381.13'	61.29'	30.71'	61.23'	S63°57'34"E

GREENWAY CURVE DATA

NO.	DELTA	RADIUS	LENGTH	TANGENT	CHORD	CHORD BEARING
4	36°43'29"	50.00'	32.05'	16.60'	31.50'	S30°31'47"E

R/W CURVE DATA

NO.	DELTA	RADIUS	LENGTH	TANGENT	CHORD	CHORD BEARING
2	23°38'53"	381.13'	157.31'	79.79'	156.19'	S56°44'33"E
3	236°21'56"	50.00'	206.27'			
4	23°38'53"	431.13'	177.94'	90.26'	176.68'	N56°44'33"W



This sheet addresses lots 31-39.



AES, a professional corporation
 1781 Jamestown Road, Williamsburg, Va. 23185
 804-253-0040
 Engineering, Planning, Surveying

PLAT OF
FORD'S COLONY
 @ **WILLIAMSBURG**
 SECTION XI-A
 LOT 1 TO LOT 69
 BERKELEY DISTRICT JAMES CITY COUNTY VIRGINIA



NO.	DATE	REVISION / COMMENT / NOTE	BY

Designed LCA/AES	Drawn BB
Scale 1"=50'	Date 9/7/1988
Project No. 5652	
Drawing No. 4 of 6	

