

LOT CURVE DATA

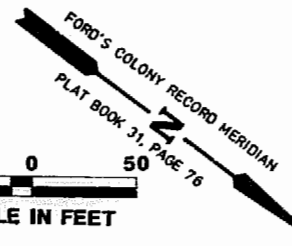
NO.	DEFLA.	RADIUS	LENGTH	TANGENT	CHORD	CHORD BEARING
2	04°46'51"	418.06'	34.88'	17.45'	34.87'	S63°13'58"W
3	11°42'19"	418.06'	85.41'	42.85'	85.26'	S71°28'33"W
4A	03°44'58"	702.04'	45.92'	22.97'	45.91'	S89°12'06"W
4B	06°44'49"	418.06'	49.23'	24.61'	49.20'	S89°42'07"W
5	08°04'25"	702.04'	98.92'	49.54'	98.84'	S76°17'27"W
18	08°07'04"	752.04'	106.55'	53.36'	106.46'	N72°33'02"E
19A	11°07'36"	257.87'	50.06'	25.12'	50.00'	N20°50'21"W
19B	98°22'50"	25.00'	42.93'	28.95'	37.84'	N33°54'52"E
19C	00°58'14"	368.06'	6.24'	3.12'	6.24'	N83°05'25"E
19D	07°27'58"	752.04'	97.99'	49.07'	97.93'	N80°20'33"E
20A	69°30'03"	60.00'	72.78'	41.62'	68.40'	N83°55'00"W
20B	27°45'50"	257.87'	102.45'	51.91'	101.78'	N37°47'04"W
21	78°21'48"	50.00'	68.38'	40.75'	63.18'	N79°59'07"W
22	28°57'18"	50.00'	25.27'	12.91'	25.00'	N25°40'34"W
23	63°49'52"	50.00'	55.70'	31.14'	52.87'	N20°14'01"E
24A	01°54'35"	307.87'	10.26'	5.13'	10.26'	S71°45'43"E
24B	54°48'04"	50.00'	47.82'	25.92'	46.02'	N79°52'58"E
25	14°56'54"	307.87'	80.32'	40.39'	80.10'	S63°19'58"E
26	15°45'53"	307.87'	84.71'	42.62'	84.44'	S47°58'34"E
27	16°52'59"	307.87'	90.72'	45.69'	90.39'	S33°39'08"E
28A	05°30'05"	368.06'	35.34'	17.68'	35.31'	N63°05'34"E
28B	98°22'50"	25.00'	42.93'	28.95'	37.84'	S64°27'58"E
28C	07°56'06"	307.87'	42.64'	21.35'	42.60'	S19°14'35"E

GREENWAY CURVE DATA

NO.	DEFLA.	RADIUS	LENGTH	TANGENT	CHORD	CHORD BEARING
17-R	89°05'21"	25.00'	38.87'	24.61'	35.07'	N15°23'13"W

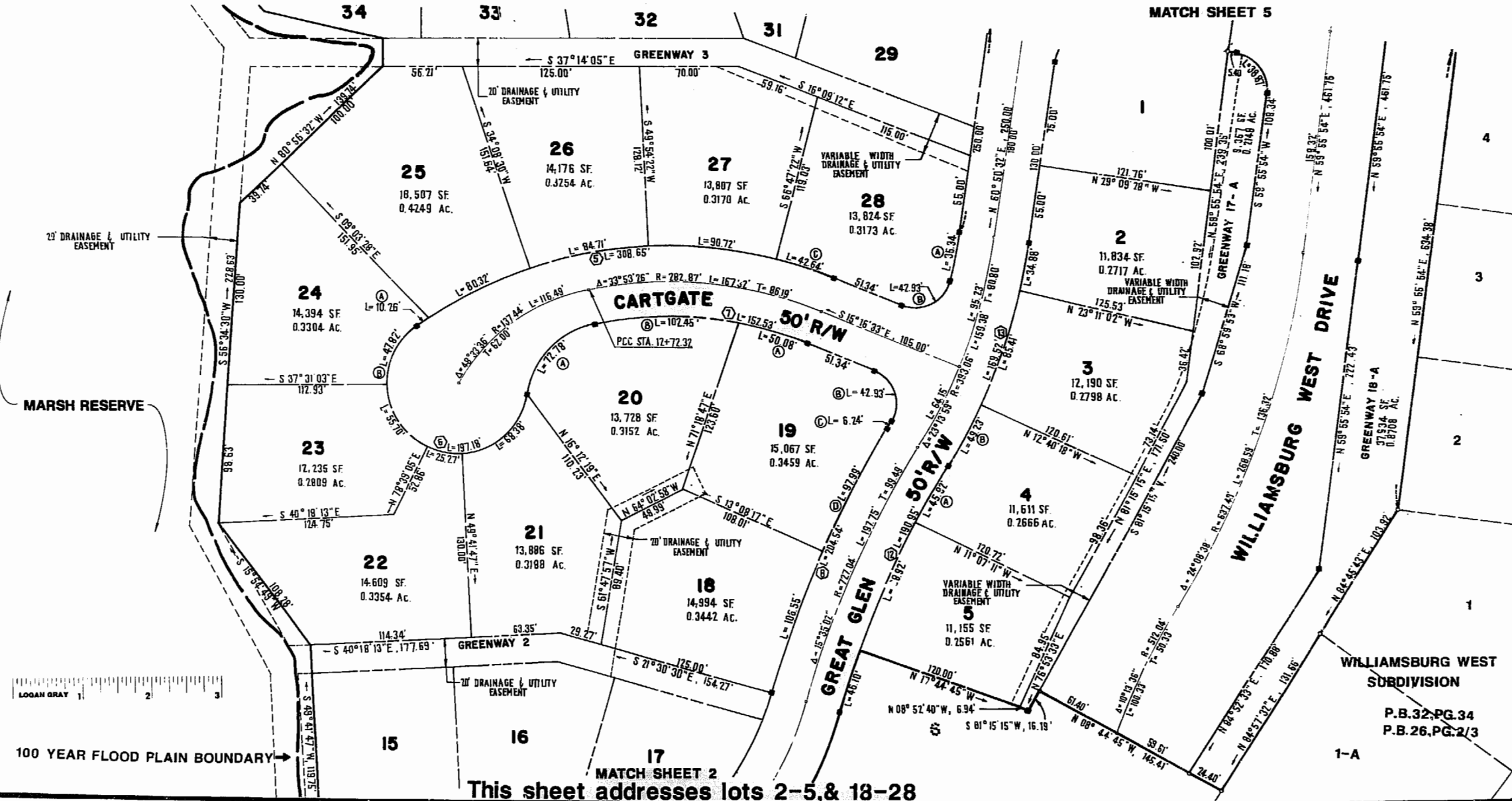
R/W CURVE DATA

NO.	DEFLA.	RADIUS	LENGTH	TANGENT	CHORD	CHORD BEARING
5	57°56'27"	307.87'	308.65'	168.70'	295.89'	S43°59'46"E
6	22°57'10"	50.00'	197.18'	102.91'	190.32'	N32°13'16"W
7	31°56'12"	257.87'	152.53'	78.57'	150.32'	N76°17'01"E
8	15°35'02"	752.04'	204.55'	96.07'	190.36'	S76°17'01"E
12	15°35'02"	702.04'	190.95'	96.07'	190.36'	S72°27'32"W
13	23°13'59"	418.06'	169.52'	85.94'	168.36'	S72°27'32"W



MATCH SHEET 4

MATCH SHEET 5



This sheet addresses lots 2-5 & 18-28



AES, a professional corporation
 1761 Jamestown Road, Williamsburg, Va. 23185
 804-253-0040
 Engineering, Planning, Surveying

PLAT OF
FORD'S COLONY
@ WILLIAMSBURG
SECTION XI-A
LOT 1 TO LOT 69
 BERKELEY DISTRICT JAMES CITY COUNTY VIRGINIA



NO.	DATE	REVISION / COMMENT / NOTE	BY

Designed LCA/AES	Drawn BB
Scale 1"=50'	Date 9/7/1988
Project No. 5652	
Drawing No. 3 of 6	



PR 49 47