

LET CURVE DATA

NO.	DELTA	RADIUS	LENGTH	TANGENT	CHORD	CHORD BEARING
6A	11°55'14"	277.14'	57.66'	28.93'	57.56'	S74°27'07"W
6B	03°45'45"	702.04'	46.10'	23.06'	46.09'	S70°22'22"W
6C	02°59'49"	291.28'	15.24'	7.62'	15.23'	S36°32'00"E
7	16°04'39"	277.14'	77.75'	39.13'	77.50'	S89°06'59"W
8	04°08'18"	277.14'	20.02'	10.01'	20.01'	S81°26'13"W
9	12°20'16"	277.14'	59.68'	29.96'	59.56'	N73°12'20"W
10	18°41'21"	277.14'	90.40'	45.61'	90.00'	N57°41'31"W
11	34°54'55"	50.00'	30.47'	15.72'	30.00'	N30°53'23"W
12	23°29'26"	50.00'	20.50'	10.40'	20.36'	N01°41'12"W
13	25°40'31"	50.00'	20.66'	10.48'	20.51'	N21°03'46"E
14	39°04'05"	50.00'	34.09'	17.74'	33.44'	N53°16'04"E
15	23°04'26"	50.00'	20.14'	10.21'	20.00'	S72°05'00"E
16	56°30'38"	50.00'	49.31'	26.87'	47.34'	S32°27'28"E
17A	30°44'21"	227.14'	121.86'	62.44'	120.40'	N88°04'46"E
17B	71°40'55"	60.00'	75.07'	43.34'	70.26'	S39°02'16"E

GREENWAY CURVE DATA

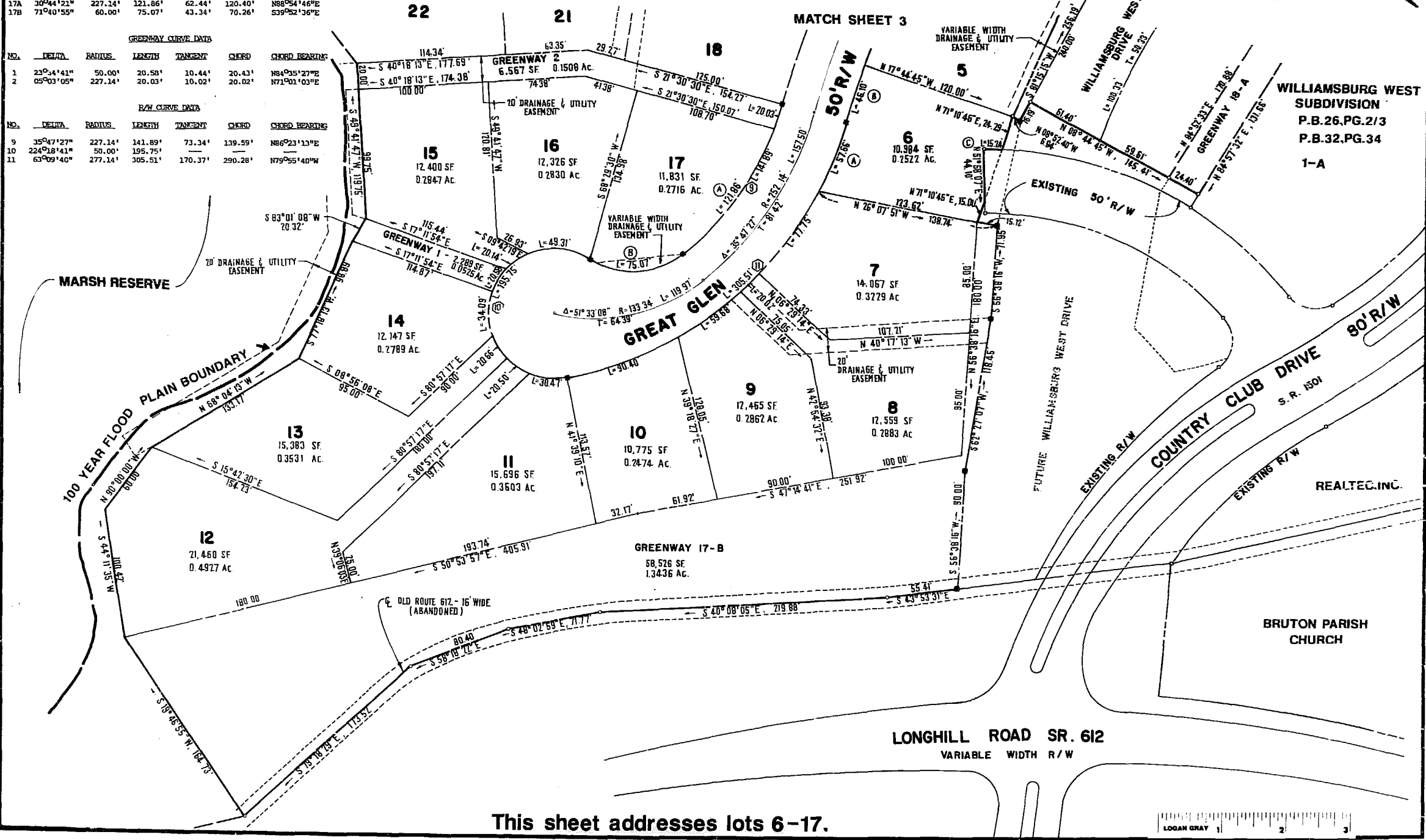
NO.	DELTA	RADIUS	LENGTH	TANGENT	CHORD	CHORD BEARING
1	23°41'41"	50.00'	20.58'	10.44'	20.43'	N84°05'27"E
2	05°03'05"	227.14'	20.03'	10.02'	20.02'	N71°01'03"E

R/W CURVE DATA

NO.	DELTA	RADIUS	LENGTH	TANGENT	CHORD	CHORD BEARING
9	35°47'27"	227.14'	141.89'	73.34'	139.59'	N86°23'13"E
10	22°48'41"	50.00'	195.75'	10.02'	195.75'	S32°27'28"E
11	60°09'46"	277.14'	305.51'	170.37'	290.28'	N79°55'40"W



FORD'S COLONY RECORD MERIDIAN
PLAT BOOK 31, PAGE 76

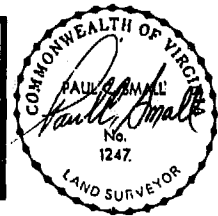


This sheet addresses lots 6-17.



AES, a professional corporation
1761 Jamestown Road, Williamsburg, Va. 23185
804-253-0040
Engineering, Planning, Surveying

PLAT OF
FORD'S COLONY
@ **WILLIAMSBURG**
SECTION XI-A
LOT 1 TO LOT 69
BERKELEY DISTRICT JAMES CITY COUNTY VIRGINIA



NO.	DATE	REVISION / COMMENT / NOTE	BY

Designed	Drawn
LCA/AES	BB
Scale	Date
1"=50'	9/7/1988
Project No.	Drawing No.
5652	2 of 6

