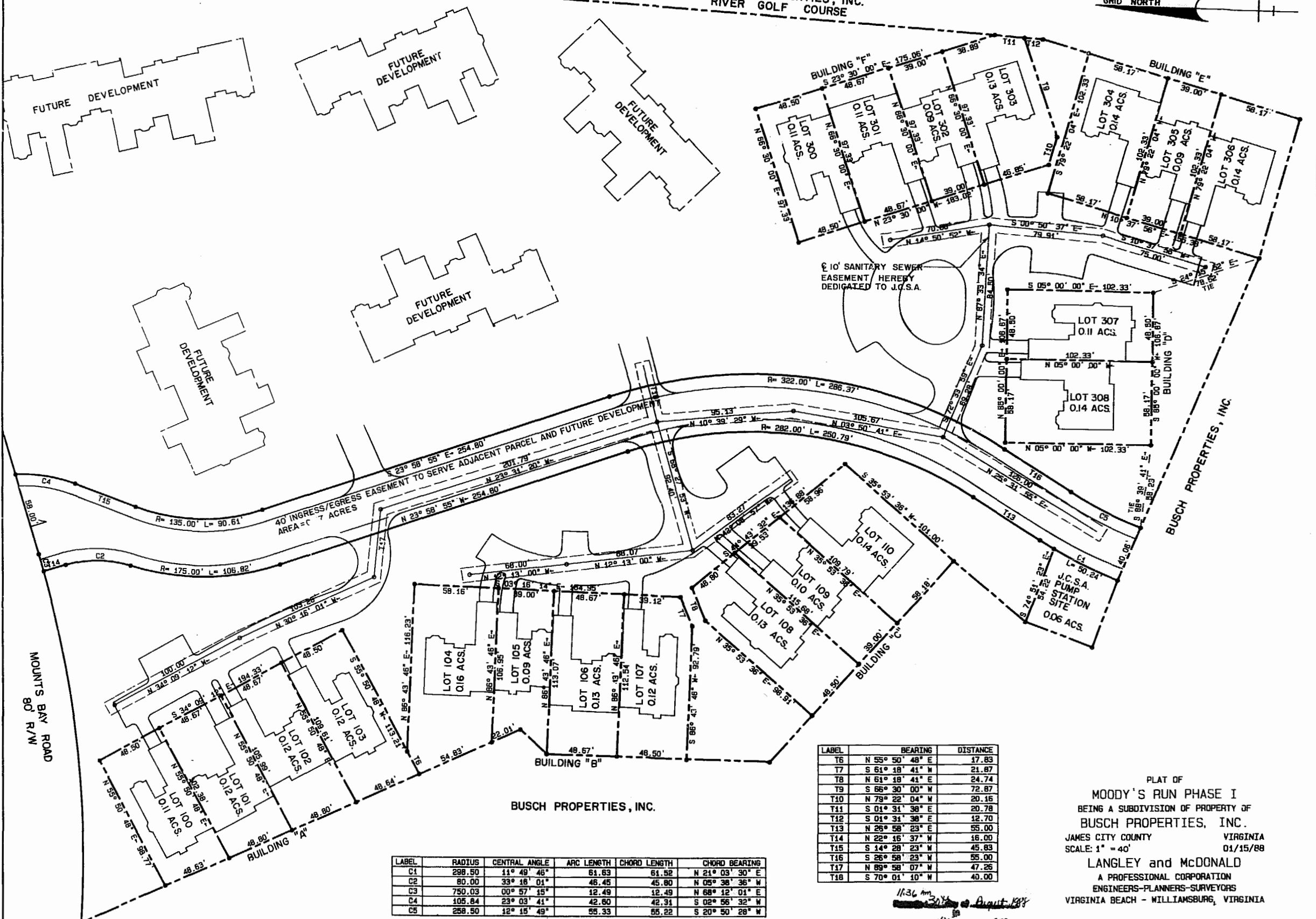


BUSCH PROPERTIES, INC.
RIVER GOLF COURSE



MOUNTS BAY ROAD
80' R/W

BUSCH PROPERTIES, INC.

BUSCH PROPERTIES, INC.

LABEL	RADIUS	CENTRAL ANGLE	ARC LENGTH	CHORD LENGTH	CHORD BEARING
C1	298.50	11° 49' 46"	61.63	61.52	N 21° 03' 30" E
C2	80.00	33° 16' 01"	46.45	45.80	N 05° 38' 36" W
C3	750.03	00° 57' 15"	12.49	12.49	N 68° 12' 01" E
C4	105.84	23° 03' 41"	42.60	42.31	S 02° 56' 32" W
C5	258.50	12° 15' 49"	55.33	55.22	S 20° 50' 28" W

LABEL	BEARING	DISTANCE
T6	N 55° 50' 48" E	17.83
T7	S 61° 18' 41" W	21.87
T8	N 61° 18' 41" E	24.74
T9	S 66° 30' 00" W	72.87
T10	N 79° 22' 04" W	20.16
T11	S 04° 31' 38" E	20.78
T12	S 04° 31' 38" E	12.70
T13	N 26° 58' 23" E	55.00
T14	N 22° 16' 37" W	16.00
T15	S 14° 28' 23" W	45.83
T16	S 26° 58' 23" W	55.00
T17	N 89° 58' 07" W	47.26
T18	S 70° 01' 10" W	40.00

11:36 am
30 Aug 1988
Release & Wind
D. G. W. D. C. D.

PLAT OF
MOODY'S RUN PHASE I
BEING A SUBDIVISION OF PROPERTY OF
BUSCH PROPERTIES, INC.
JAMES CITY COUNTY VIRGINIA
SCALE: 1" = 40' 01/15/88
LANGLEY and McDONALD
A PROFESSIONAL CORPORATION
ENGINEERS-PLANNERS-SURVEYORS
VIRGINIA BEACH - WILLIAMSBURG, VIRGINIA

