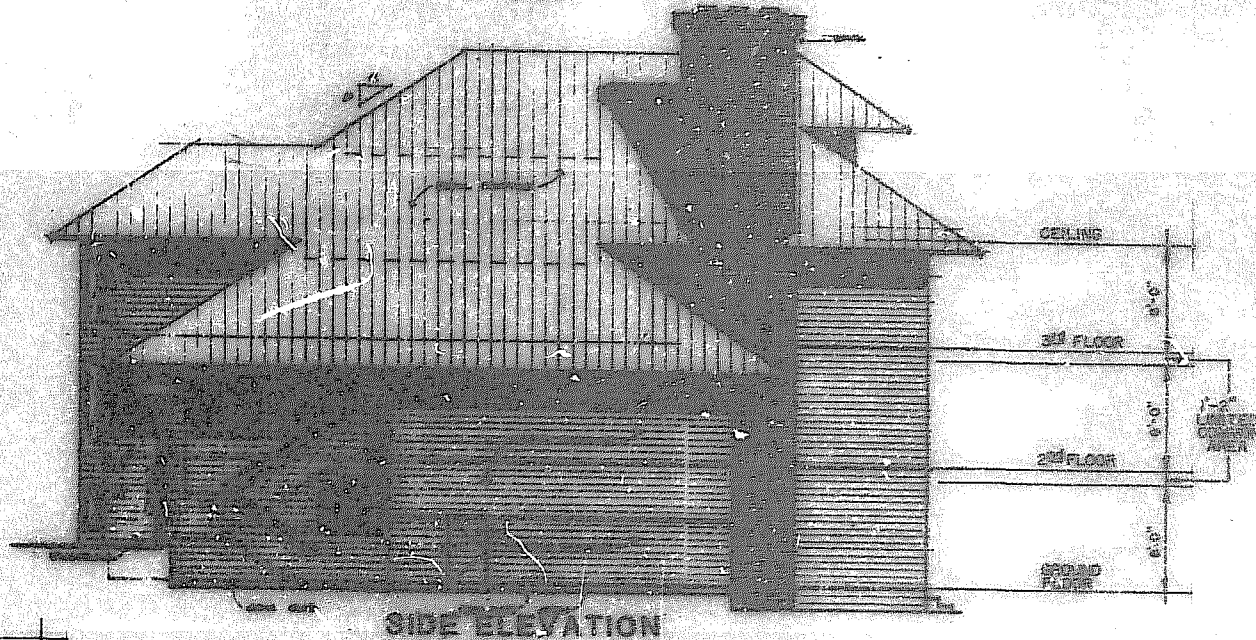
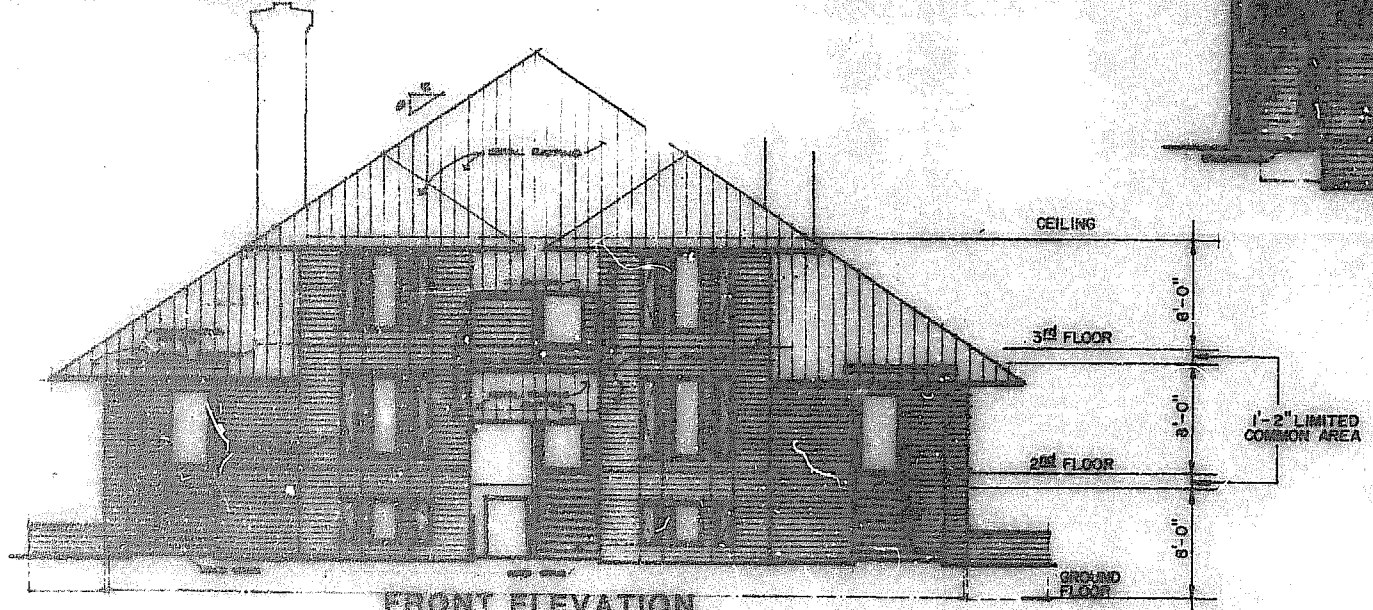


| UNIT NO. | LOWER BOUNDARY | UPPER BOUNDARY |
|----------|----------------|----------------|
| 606 | 51.42 | 59.42 |
| 607 | 51.42 | 59.42 |
| 608 | 60.59 | 69.59 |
| 609 | 60.59 | 69.59 |
| 610 | 69.76 | 77.76 |
| 611 | 69.76 | 77.76 |

- (1) DATUM NATIONAL OCEAN SURVEY 0.00=M.S.L.
(PME 1978 ADJUSTMENT)
- (2) UNIT 606 SIDE ENTRY
LOWER BOUNDARY 51.42 ; UPPER BOUNDARY 59.42
- (3) UNIT 608 SIDE ENTRY
LOWER BOUNDARY 60.59 ; UPPER BOUNDARY 67.59



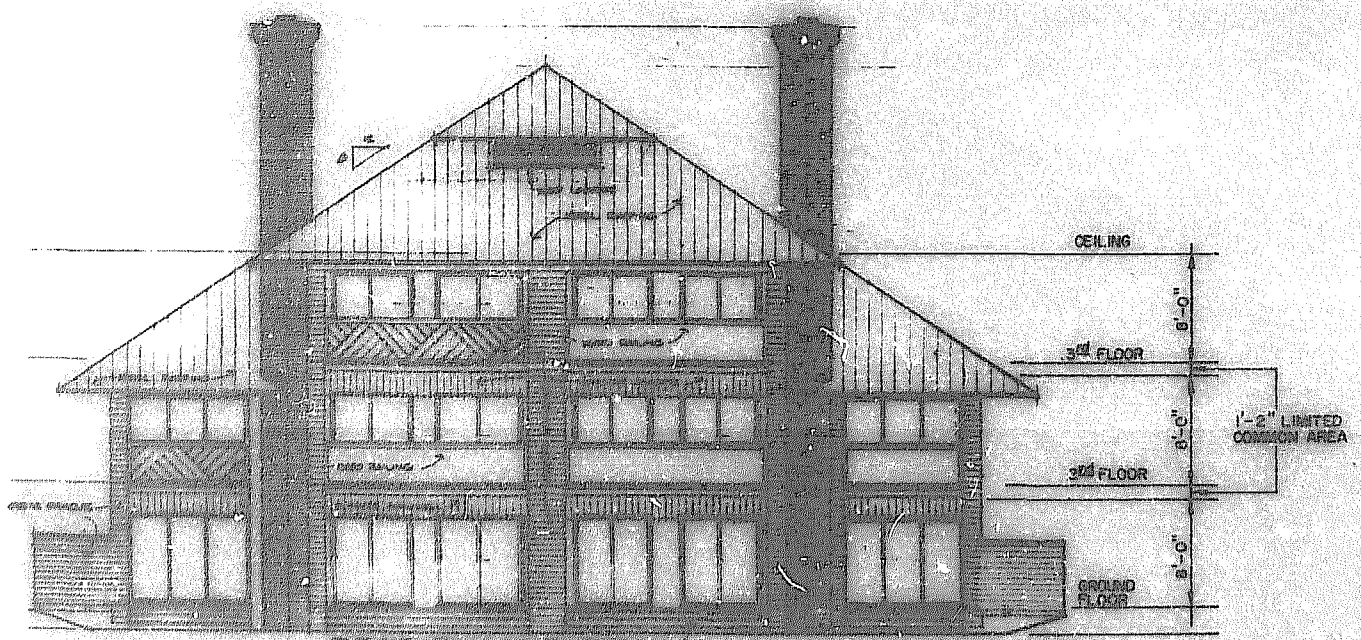
SIDE ELEVATION



FRONT ELEVATION

ARCHITECT'S CERTIFICATE
 I HEREBY CERTIFY THAT TO THE BEST OF MY KNOWLEDGE AND BELIEF THAT CONSTRUCTION OF THE UNITS DESCRIBED HEREON IS SUBSTANTIALLY COMPLETED AND THAT THIS PLAN IS ACCURATE, CORRECT AND IN COMPLIANCE WITH THE REQUIREMENTS OF SUB-SECTION 55-1009 AL, RL CODE ANNOTATED CODE SUPPLEMENT AND ANY OTHER CITY ORDINANCES WHICH MAY BE IN EFFECT.

 STATE CERTIFIED ARCHITECT



REAR ELEVATION

BUILDING "2"



EXHIBIT B
CONFERENCE CENTER CONDOMINIUM
 PHASE I
 BEING A SUBDIVISION OF PROPERTY OF
 BIRCH PROPERTIES, INC.
 KINGSMILL ON THE JAMES
 JAMES CITY COUNTY, VIRGINIA
 SCALE 1"=8' DATE 4/11/88
 LONGHORN AND McNEEL, P.C.
 ARCHITECTS AND ENGINEERS
 VIRGINIA
 SHEET 31 OF 33

