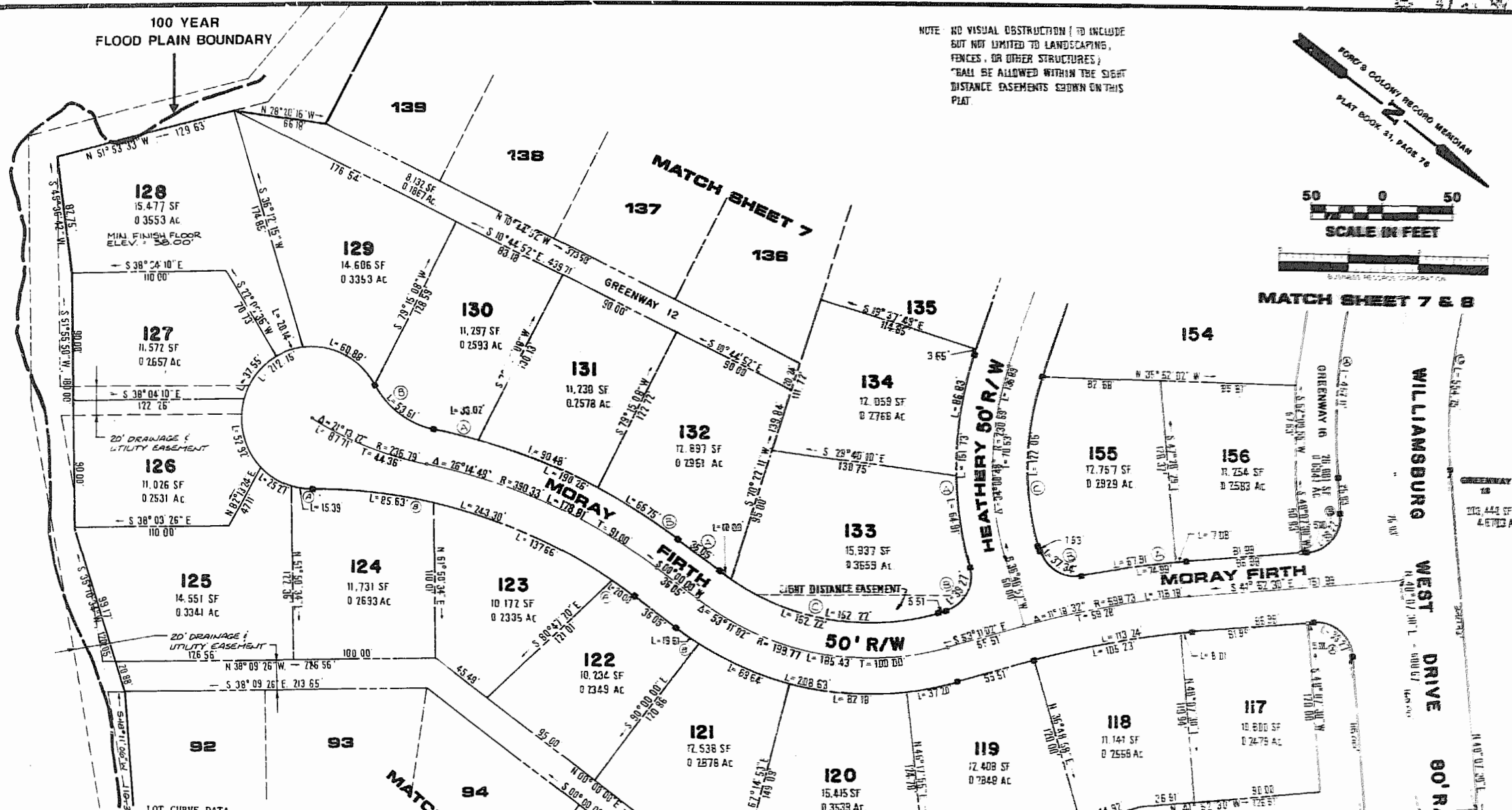
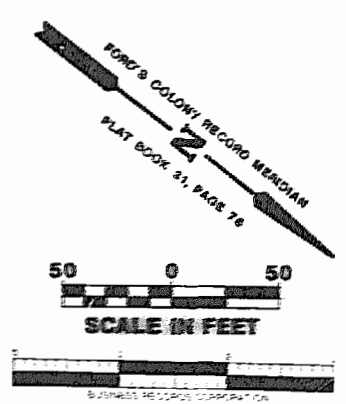


100 YEAR FLOOD PLAIN BOUNDARY

NOTE: NO VISUAL OBSTRUCTION (TO INCLUDE BUT NOT LIMITED TO LANDSCAPING, FENCES, OR OTHER STRUCTURES) SHALL BE ALLOWED WITHIN THE SIGHT DISTANCE EASEMENTS SHOWN ON THIS PLAT.



20' DRAINAGE & UTILITY EASEMENT

SIGHT DISTANCE EASEMENT

LOT CURVE DATA

NO.	DELTA	RADIUS	LENGTH	TANGENT	CHORD	CHORD BEARING
117	00°48'00"	573.73'	8.01'	4.01'	8.01'	N42°16'30"W
118	10°30'32"	573.73'	105.23'	52.76'	105.08'	N47°55'46"W
119	09°28'57"	224.77'	37.20'	18.64'	37.16'	N48°26'34"W
120	20°56'59"	224.77'	82.18'	41.56'	81.73'	N33°13'36"W
121	17°45'11"	224.77'	69.64'	35.10'	69.36'	N13°52'31"W
122A	03°08'14"	365.33'	20.00'	10.00'	20.00'	N01°34'07"W
122B	04°59'56"	224.77'	19.61'	9.81'	19.60'	N02°30'00"W
123	21°35'25"	365.33'	137.66'	69.66'	136.85'	N13°55'56"W
124A	17°38'17"	50.00'	15.39'	7.76'	15.33'	N29°20'18"W
124B	13°25'48"	365.33'	85.63'	43.51'	85.44'	N31°26'32"W
125	28°57'18"	50.00'	25.27'	12.91'	25.00'	N06°02'30"W
126	60°38'22"	50.00'	52.92'	29.24'	50.48'	N38°45'20"E
127	43°02'04"	50.00'	37.55'	19.71'	36.68'	S89°24'27"E
128	21°04'26"	50.00'	20.14'	10.21'	20.00'	S56°21'11"E
129	69°45'34"	50.00'	60.88'	34.85'	57.19'	S09°56'11"E
130A	04°33'20"	415.33'	33.02'	16.52'	33.01'	S23°58'09"E
130B	51°11'25"	60.00'	53.61'	28.74'	51.84'	S00°39'07"E
131	12°28'57"	415.33'	90.48'	45.42'	90.30'	S15°27'01"E
132A	03°16'44"	174.77'	10.00'	5.00'	10.00'	S01°38'26"E

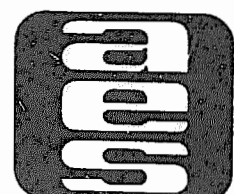
NO.	DELTA	RADIUS	LENGTH	TANGENT	CHORD	CHORD BEARING
132B	09°12'33"	415.33'	66.73'	33.45'	66.68'	S04°36'16"E
133A	14°32'59"	255.59'	64.91'	32.63'	64.75'	N44°05'26"E
133B	90°00'00"	25.00'	39.27'	25.00'	35.36'	S81°48'58"E
133C	49°54'18"	174.77'	152.22'	81.32'	147.46'	S28°13'53"E
134	19°27'49"	255.59'	86.83'	43.84'	86.41'	N61°05'51"E
135	92°57'21"	25.00'	40.56'	26.32'	36.26'	N24°21'05"E
155A	06°14'18"	623.73'	67.91'	33.99'	67.88'	S45°38'40"E
155B	85°34'46"	25.00'	37.34'	23.14'	33.97'	S05°58'26"E
155C	34°00'48"	205.59'	122.05'	62.88'	120.26'	S53°49'21"W
156	00°39'01"	623.73'	7.08'	3.54'	7.08'	S42°12'01"E

GREENWAY CURVE DATA

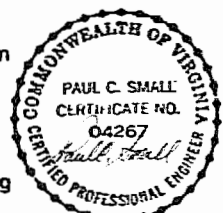
NO.	DELTA	RADIUS	LENGTH	TANGENT	CHORD	CHORD BEARING
11A	90°00'00"	25.00'	39.27'	25.00'	35.36'	S03°07'30"E
16A	57°39'36"	449.26'	452.13'	247.29'	433.27'	S76°07'18"E
16B	90°00'00"	25.00'	39.27'	25.00'	35.36'	S66°52'30"E
18C	66°00'00"	369.26'	554.25'	344.14'	503.56'	N68°52'30"W

THIS SHEET ADDRESSES LOTS 117-134, 155-156.

NO.	DATE	REVISION / COMMENT / NOTE	BY



AES, a professional corporation
 1761 Jamestown Road
 Williamsburg, Va. 23185
 804-253-0040
 Engineering, Planning, Surveying



PLAT OF
FORD'S COLONY AT WILLIAMSBURG
 SECTION XI-A
 LOT 70 TO LOT 156

BERKELEY DISTRICT JAMES CITY COUNTY VIRGINIA

Designed AES/LCA	Drawn AES
Scale 1"=50'	Date JAN. 1999
Project No. 5652	
Drawing No. 6 of 8	