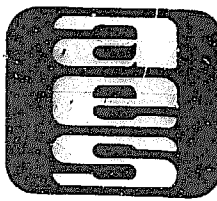
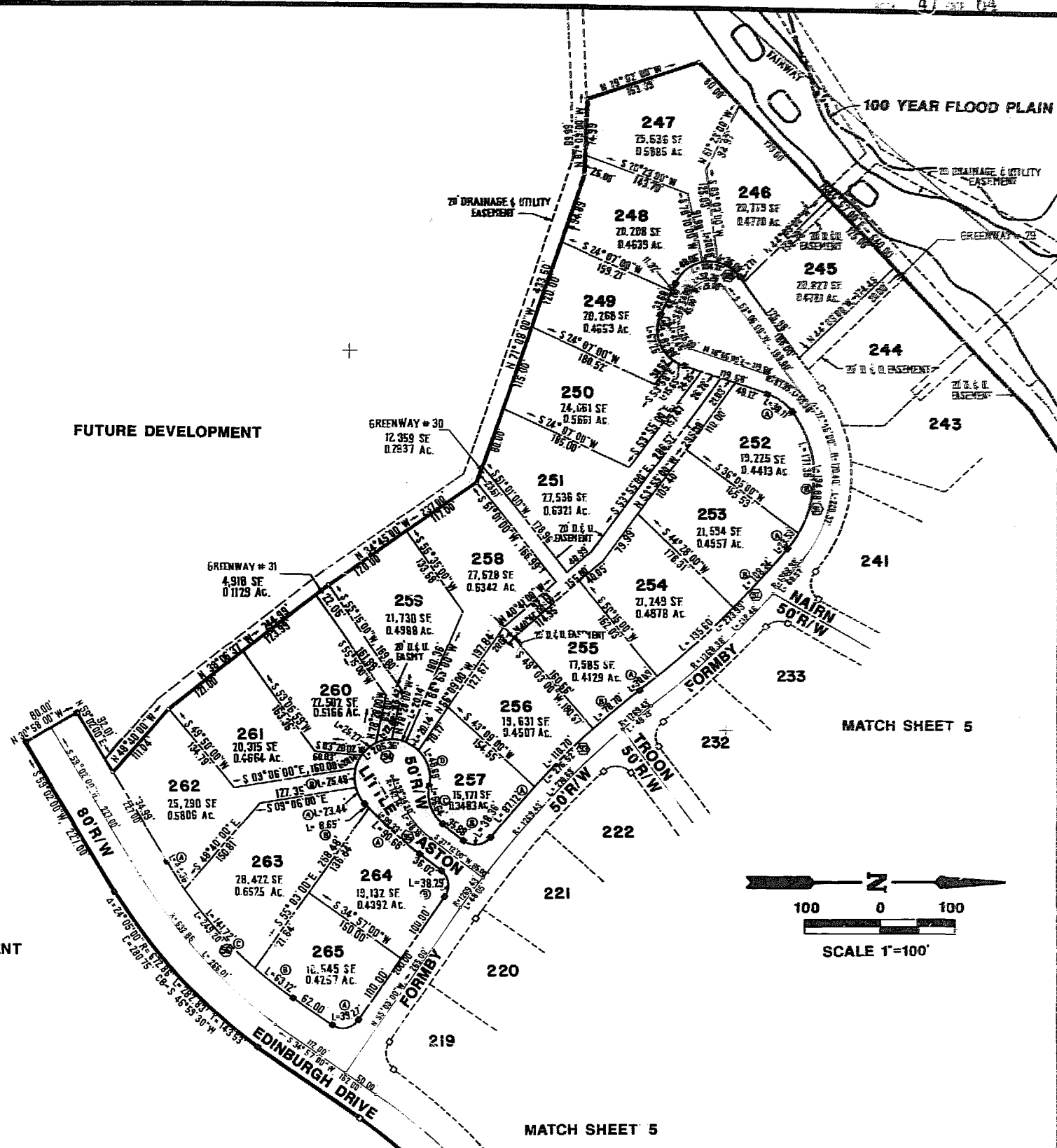


LOTS CURVE TABLE

LOT NO.	DELTA	RADIUS	LENGTH	TANGENT	CHORD	CHORD BEARING
246	41°21'19"	50.00'	36.09'	18.87'	35.31'	S32°25'21"W
247	23°34'41"	50.00'	20.58'	10.44'	20.43'	S00°02'39"E
248	55°04'00"	50.00'	48.06'	26.07'	46.23'	S39°22'00"E
249	77°04'00"	50.00'	67.25'	39.82'	62.30'	N74°34'00"E
250	17°56'00"	50.00'	15.65'	7.89'	15.59'	N27°04'00"E
252A	34°59'59"	62.39'	38.11'	19.67'	37.52'	N35°36'00"E
252B	67°29'05"	145.48'	171.35'	97.18'	161.62'	N86°50'33"E
253A	09°15'56"	145.48'	23.53'	11.79'	23.50'	S54°46'57"E
253B	04°37'00"	1343.38'	108.24'	54.15'	108.21'	S47°50'31"E
254	05°47'00"	1343.38'	135.60'	67.86'	135.54'	S42°38'30"E
255A	01°17'00"	1343.38'	30.09'	15.05'	30.09'	S39°06'30"E
255B	03°29'00"	1294.43'	78.70'	39.36'	78.68'	S40°12'30"E
256	04°54'00"	1294.43'	110.70'	55.38'	110.67'	S44°24'00"E
257A	03°51'23"	1294.43'	87.12'	43.58'	87.11'	S48°46'42"E
257B	07°54'23"	25.00'	38.36'	24.10'	34.70'	S06°45'12"E
257C	68°54'00"	50.00'	56.64'	31.79'	53.66'	S69°39'00"W
257D	55°47'27"	50.00'	48.69'	26.47'	46.79'	S74°12'19"W
258	23°04'26"	50.00'	20.14'	10.21'	20.00'	S34°46'20"W
259	23°04'26"	50.00'	20.14'	10.21'	20.00'	S11°41'54"W
260	28°57'18"	50.00'	25.27'	12.91'	25.00'	S39°36'44"E
261	23°04'26"	50.00'	20.14'	10.21'	20.00'	S65°37'36"E
262A	04°17'14"	592.86'	44.36'	22.19'	44.35'	S56°53'23"W
262B	29°11'58"	50.00'	25.48'	13.02'	25.21'	N86°14'12"E
263A	26°51'45"	50.00'	23.44'	11.94'	23.23'	N60°12'25"E
263B	00°50'00"	594.71'	8.65'	4.33'	8.65'	N46°21'12"E
263C	13°41'46"	592.86'	141.72'	71.20'	141.38'	S47°53'53"W
264A	08°44'12"	594.71'	90.68'	45.43'	90.60'	N41°34'06"E
264B	87°45'00"	25.00'	38.29'	24.04'	34.65'	N81°04'30"E
265A	90°00'00"	25.00'	39.27'	25.00'	35.36'	S10°03'00"E
265B	06°06'00"	592.86'	63.12'	31.59'	63.09'	S38°00'00"W

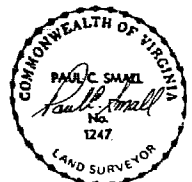
R/W CURVE TABLE

CURVE NO.	DELTA	RADIUS	LENGTH	TANGENT	CHORD	CHORD BEARING
89	120°00'00"	50.00'	104.72'	86.60'	86.60'	N06°54'00"W
90	95°00'00"	50.00'	82.90'	54.57'	73.73'	S65°36'00"W
91	76°45'00"	145.48'	194.88'	115.20'	180.63'	N88°31'30"W
92	11°41'00"	1343.38'	273.93'	137.44'	273.46'	N44°18'30"W
93	12°14'23"	1294.43'	276.52'	138.79'	276.00'	N44°35'12"W
94	235°19'32"	50.00'	205.36'	—	—	—
95	09°34'12"	594.12'	99.33'	49.78'	99.22'	S41°59'06"W
96	24°05'00"	592.86'	249.20'	126.47'	247.37'	N46°59'30"E



**AES**, a professional corporation  
 1761 Jamestown Road, Williamsburg, Va. 23185  
 804-253-0040  
 Engineering, Planning, Surveying

PLAT OF  
**FORD'S COLONY**  
 @ **WILLIAMSBURG**  
 SECTION VI  
 LOT 245 TO LOT 265  
 BERKELEY DISTRICT JAMES CITY COUNTY VIRGINIA



No.	DATE	REVISION / COMMENT / NOTE	BY

Designed LCA/AES	Drawn ES
Scale 1"=100'	Date 08/28/1997
Project No. 5652	
Drawing No. 6 of 6	

DB 47  
 05/64