

LOT CURVE TABLE

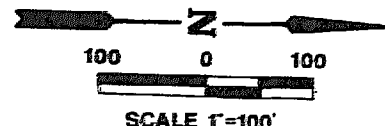
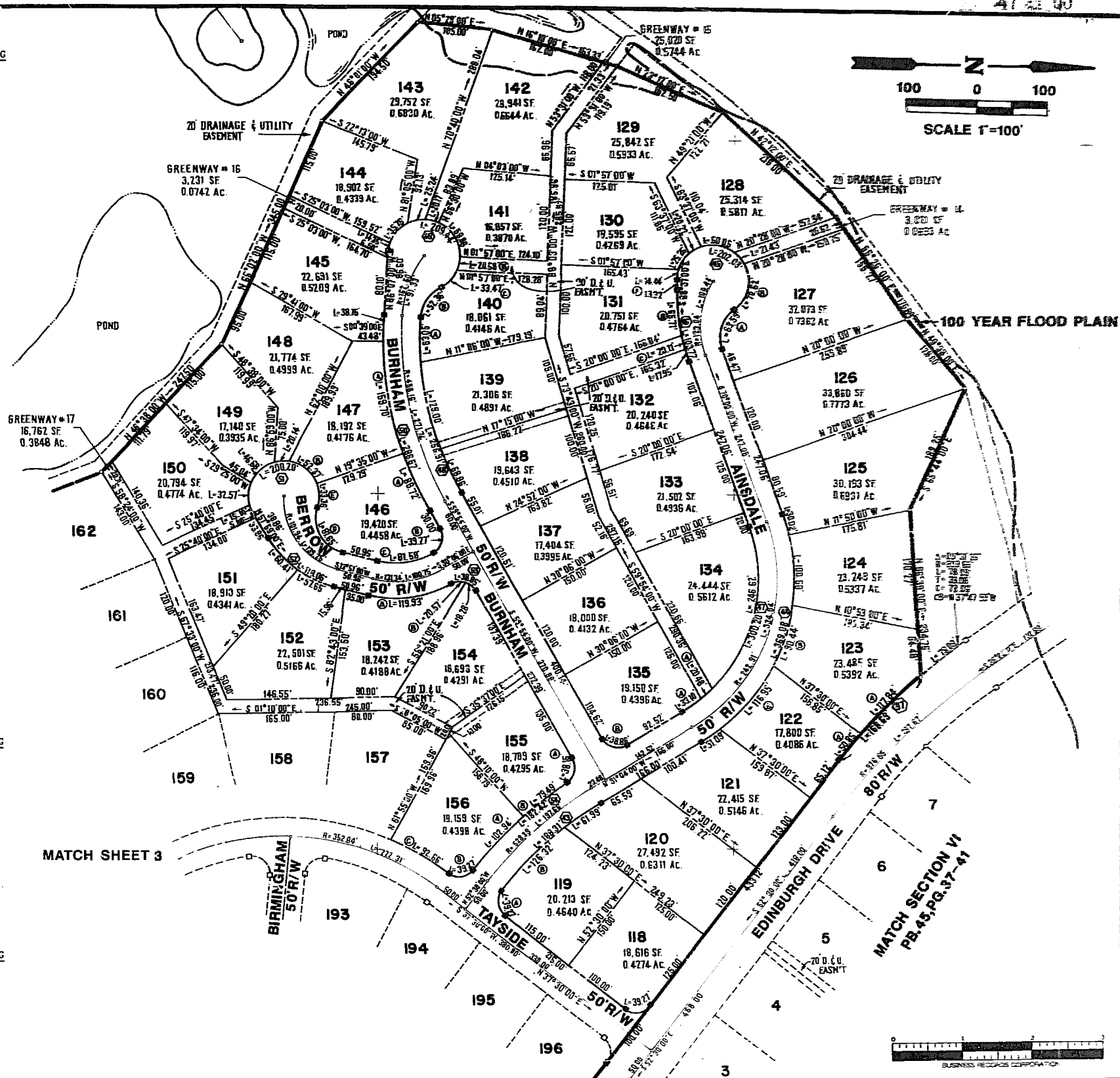
LOT NO.	DELTA	RADIUS	LENGTH	TANGENT	CHORD	CHORD BEARING
118	90°00'00"	25.00'	39.27'	25.00'	35.36'	S07°30'00"E
119A	90°00'00"	25.00'	39.27'	25.00'	35.36'	S82°30'00"W
119B	14°22'41"	503.39'	126.32'	63.49'	125.99'	N45°18'40"W
120	07°03'20"	503.39'	126.32'	61.99'	125.99'	N34°35'40"W
121	06°38'5"	67.91'	31.09'	15.56'	31.07'	N34°23'28"W
122A	03°35'54"	809.65'	50.85'	25.43'	50.84'	S50°42'03"E
122B	25°00'38"	267.91'	116.95'	59.42'	116.02'	N50°13'16"W
123A	08°20'21"	809.65'	117.84'	59.03'	117.74'	S44°43'56"E
123B	19°20'30"	267.91'	90.44'	45.65'	90.44'	N72°23'50"W
124	21°30'45"	267.91'	100.59'	50.89'	100.00'	S87°10'33"W
125	06°25'10"	267.91'	30.02'	15.02'	30.00'	S73°12'35"W
127A	72°52'19"	50.00'	63.59'	36.91'	59.39'	N73°34'01"W
127B	80°55'20"	50.00'	70.62'	42.65'	64.89'	N77°25'21"W
128	57°21'30"	50.00'	50.05'	27.35'	47.99'	S08°42'56"W
129	23°10'09"	50.00'	20.22'	10.25'	20.68'	S31°32'54"E
130	28°57'00"	50.00'	25.26'	12.91'	25.00'	S57°36'28"E
131A	16°33'02"	50.00'	14.44'	7.27'	14.39'	S80°22'03"E
131B	13°32'02"	278.20'	65.71'	33.01'	65.56'	N84°36'19"W
132	03°41'50"	278.20'	17.95'	8.98'	17.95'	N71°50'55"E
134	64°50'41"	217.91'	266.62'	138.41'	233.67'	S77°34'39"E
135A	08°42'08"	217.91'	33.10'	16.58'	33.07'	S35°25'05"E
135B	89°01'03"	25.01'	38.86'	24.58'	35.06'	S15°24'07"W
138	09°06'29"	433.16'	68.86'	34.50'	68.79'	S64°27'15"W
139	16°32'05"	433.16'	125.00'	62.94'	124.57'	S77°16'32"E
140A	08°20'25"	433.16'	63.05'	31.58'	63.00'	S89°42'48"W
140B	59°59'57"	50.00'	52.36'	28.87'	50.00'	N56°07'01"W
140C	38°21'16"	50.00'	33.47'	17.39'	32.85'	N45°17'28"W
141	68°36'42"	50.00'	59.88'	34.12'	56.36'	S57°38'39"W
142	23°06'39"	50.00'	20.17'	10.22'	20.03'	S11°46'59"W
143	28°55'36"	50.00'	25.24'	12.90'	24.98'	S14°14'09"E
144	40°58'30"	50.00'	35.76'	18.68'	35.00'	S49°11'12"E
145	04°31'30"	483.16'	38.16'	19.09'	38.15'	S88°22'43"E
146A	10°31'15"	483.16'	88.72'	44.49'	88.59'	N65°09'37"E
146B	90°00'00"	27.30'	39.27'	25.00'	35.36'	S75°06'00"E
146C	43°57'06"	106.34'	81.58'	42.91'	79.59'	S08°07'30"E
146D	93°33'33"	50.00'	81.65'	53.21'	72.87'	S60°37'47"W
146E	38°13'33"	50.00'	33.36'	17.33'	32.74'	S88°17'53"W
147A	18°56'15"	483.16'	159.79'	80.58'	158.97'	N79°53'22"E
147B	60°00'30"	50.00'	52.37'	28.87'	50.01'	S39°10'45"W
148	23°04'30"	50.00'	20.14'	10.21'	20.00'	S02°21'45"E
149	53°29'15"	50.00'	46.68'	25.20'	45.00'	S40°38'37"E
150	37°19'30"	50.00'	32.57'	16.89'	32.00'	S86°03'00"E
151	22°34'52"	153.27'	60.41'	30.60'	60.32'	N46°41'35"E
152	2°13'08"	153.27'	57.65'	29.17'	57.31'	N24°37'34"E
153A	4°37'04"	156.34'	119.93'	63.09'	117.01'	S08°07'30"W
153B	4°07'54"	25.00'	20.57'	10.91'	19.99'	N06°32'03"W
154	41°54'06"	25.00'	18.28'	9.57'	17.88'	N37°58'57"E
155A	87°27'15"	25.00'	38.16'	23.91'	34.56'	S77°20'34"E
155B	08°13'46"	553.39'	79.49'	39.81'	79.42'	S37°43'39"E
156A	10°39'29"	553.39'	102.94'	51.62'	102.79'	S47°10'16"E
156B	90°00'00"	25.00'	39.27'	25.00'	35.36'	S07°30'00"E
156C	14°03'01"	377.84'	92.66'	46.56'	92.42'	S30°28'30"W

R/W CURVE TABLE

CURVE NO.	DELTA	RADIUS	LENGTH	TANGENT	CHORD	CHORD BEARING
43	21°26'00"	503.39'	188.31'	95.27'	187.21'	S41°47'00"E
44	78°55'57"	267.91'	369.08'	220.58'	340.58'	S70°32'01"E
45	23°30'20"	50.00'	202.03'	101.01'	202.03'	S23°30'20"E
46	21°22'20"	278.20'	103.77'	52.50'	103.17'	S80°41'10"W
47	78°55'57"	217.91'	300.20'	179.41'	277.02'	N70°32'01"W
48	33°58'59"	433.16'	256.91'	132.36'	253.17'	N76°53'30"E
49	239°59'57"	50.00'	209.44'	104.72'	209.44'	S239°59'57"E
50	33°58'59"	483.16'	286.57'	147.64'	282.39'	S76°53'30"W
51	229°25'33"	50.00'	200.20'	100.10'	200.20'	S229°25'33"E
52	44°08'00"	153.27'	118.06'	62.13'	115.16'	S35°55'00"W
53	89°02'00"	25.00'	38.85'	24.58'	35.06'	S14°25'00"W
54	18°53'15"	553.39'	182.42'	92.05'	181.60'	N43°03'23"W
57	11°56'15"	809.65'	168.69'	84.65'	168.38'	S46°31'53"E

GREENWAYS CURVE TABLE

GRNWAY NO.	DELTA	RADIUS	LENGTH	TANGENT	CHORD	CHORD BEARING
14	24°33'19"	50.00'	21.43'	10.88'	21.27'	S49°40'20"W
15A	05°23'08"	217.91'	20.48'	10.25'	20.48'	S42°27'45"E
15B	23°34'41"	50.00'	20.58'	10.44'	20.43'	N76°15'39"W
15C	04°08'27"	278.20'	20.11'	10.06'	20.10'	N75°46'04"E
16	16°26'34"	50.00'	14.35'	7.22'	14.30'	S77°53'43"E



AES, a professional corporation

1761 Jamestown Road, Williamsburg, Va. 23185

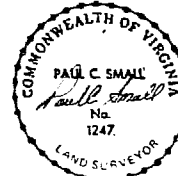
804-253-0040

Engineering, Planning, Surveying

PLAT OF
FORD'S COLONY
@ **WILLIAMSBURG**
SECTION VI

LOT 118 TO LOT 156

BERKELEY DISTRICT JAMES CITY COUNTY VIRGINIA



NO.	DATE	REVISION / COMMENT / NOTE	BY

Designed	Drawn
LCA/MS	SS
Scale	Date
1"=100'	
Project No.	5652
Drawing No.	2 of 6