

Surveyor's Certificate

I hereby certify that this is a correct and accurate Plat, that this Plat is in compliance with the Condominium Act, Title 55, Chapter 4.2, Sections 55-79 through 55-79.103 of the Code of Virginia of 1970, as amended.

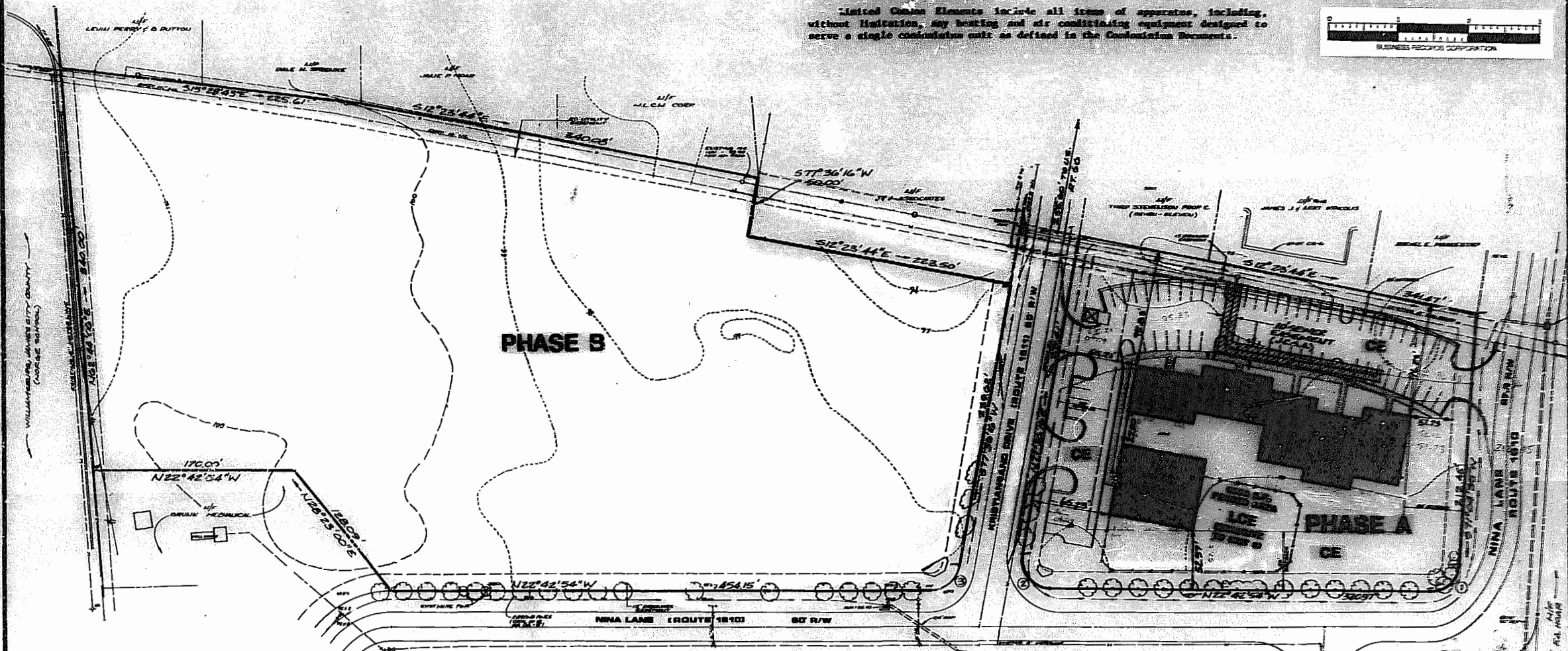
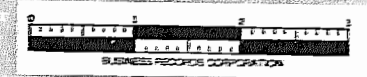
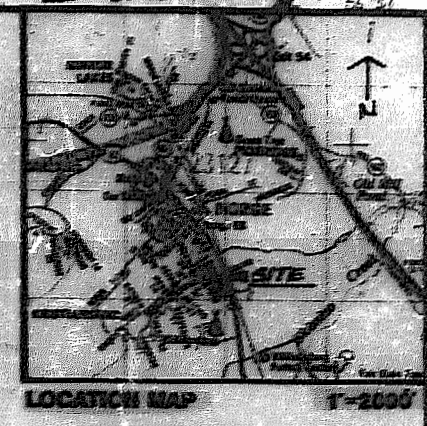
Paul C. Small
Paul C. Small, C.L.S. 6/1/0 Date

CE - Common Elements:

Common Elements include all portions of the Condominium other than the units shown and designated hereon and defined in the Condominium Documents and the Limited Common Elements. Examples of Common Elements are: parking facilities, paved areas, the grounds (whether or not landscaped), all portions of the buildings not a part of the units and all conduits, installations, signs, signs, etc. which serve other Common Elements or which serve more than one unit.

LCE - Limited Common Elements:

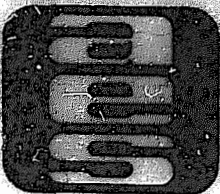
Limited Common Elements include all items of apparatus, including, without limitation, any heating and air conditioning equipment designed to serve a single condominium unit as defined in the Condominium Documents.



CURVE DATA

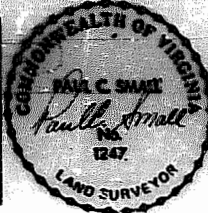
NO.	DELTA	RADIUS	LENGTH	TANGENT	CHORD	CHORD BEARING
1	86°12'31"	25.00'	37.62'	23.39'	34.17'	N65°49'10"W
2	100°19'10"	25.00'	43.77'	29.96'	38.39'	N27°26'42"E
3	79°40'50"	25.00'	34.77'	20.86'	32.03'	N62°39'19"W

EXHIBIT A



AES, a professional corporation
1761 Jamestown Road, Williamsburg, Va. 23185
804-253-0040
Engineering, Planning, Surveying

PLAT OF
KRISTIANSAND OFFICE PARK
(A CONDOMINIUM)
JAMES CITY COUNTY VIRGINIA



NO.	DATE	REVISION / COMMENT / NOTE	BY
2	1-22-08	Revised to show plat	
1	8-5-07	Revised Forest Area to 9000sf	

Designed By	Drawn By
Scale	Plot Size
Project No.	6331
Drawing No.	1 of 3