

NOTE: 1. THE AREA SURROUNDING BLDGS 7, 8, 9 IS WOODED W/ MIXED PINES & HARDWOODS OF VARYING DIAMETERS.

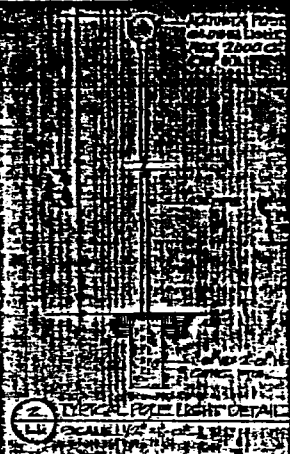
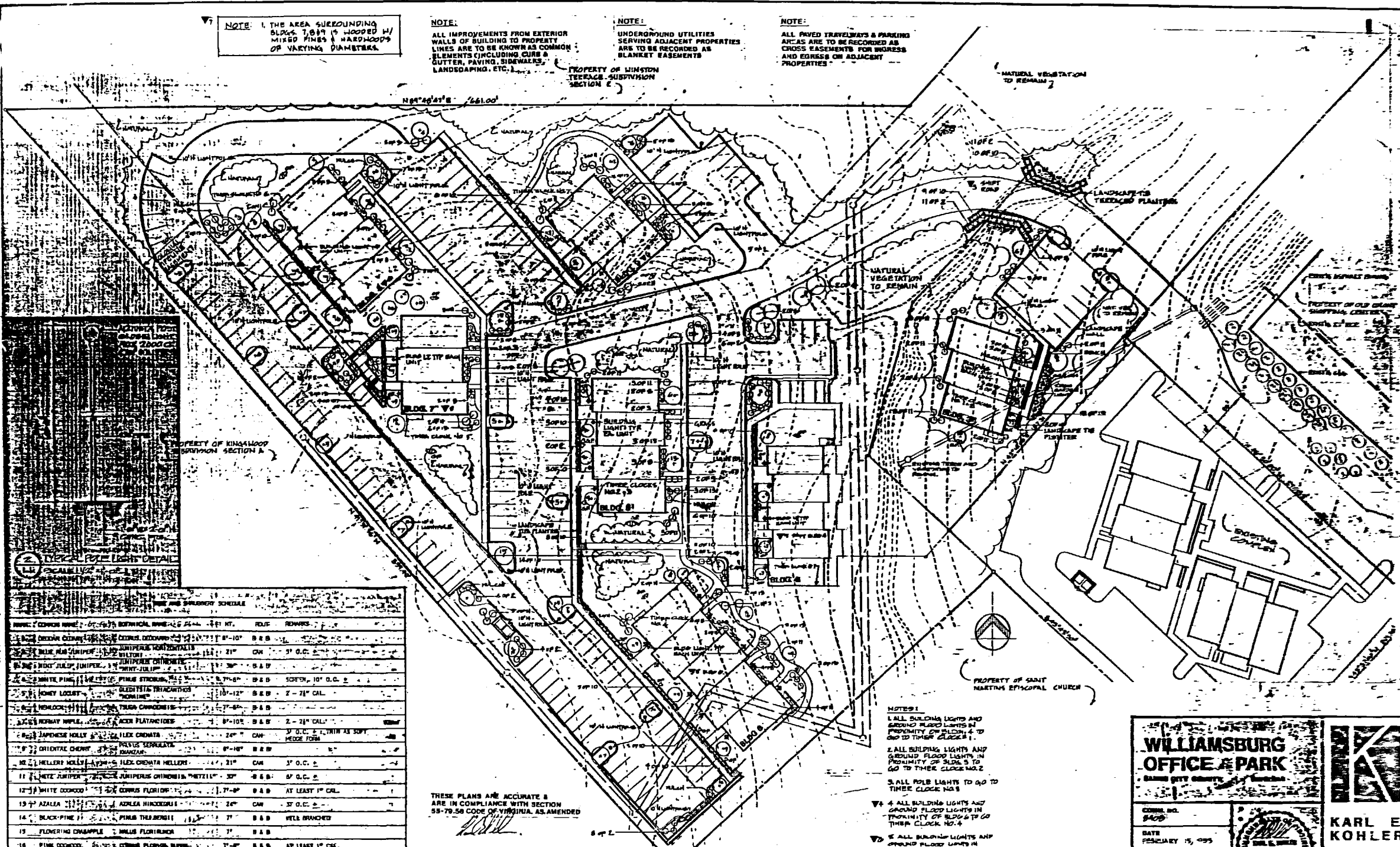
NOTE: ALL IMPROVEMENTS FROM EXTERIOR WALLS OF BUILDING TO PROPERTY LINES ARE TO BE KNOWN AS COMMON ELEMENTS (INCLUDING CURBS & GUTTER, PAVING, SIDEWALKS, LANDSCAPING, ETC.).

NOTE: UNDERGROUND UTILITIES SERVING ADJACENT PROPERTIES ARE TO BE RECORDED AS BLANKET EASEMENTS.

NOTE: ALL PAVED TRAVELWAYS & PARKING AREAS ARE TO BE RECORDED AS CROSS EASEMENTS FOR WIDENESS AND EDGES ON ADJACENT PROPERTIES.

PROPERTY OF WINSTON TERRACE SUBDIVISION SECTION 6

NATURAL VEGETATION TO REMAIN



PLANT	COMMON NAME	SCIENTIFIC NAME	HT.	COL.	REMARKS
1	DOGWOOD	CECILIUS DOGWOOD	8'-10"	B & B	
2	BLACK WALNUT	JUNIPERUS HORIZONTALIS	15'-21'	CM	3' O.C. 2"
3	DOGWOOD	JUNIPERUS HORIZONTALIS	15'-21'	B & B	
4	WHITE PINE	PIBUS STROBUS	7'-6"	B & B	SOFTEN, 10' O.C. 2"
5	HONEY LOCUST	LEDISTIS TRICARATHOS	10'-12'	B & B	2-21" CAL.
6	WINDY PINE	PIBUS STROBUS	7'-6"	B & B	
7	WINDY PINE	PIBUS STROBUS	7'-6"	B & B	
8	WINDY PINE	PIBUS STROBUS	7'-6"	B & B	
9	WINDY PINE	PIBUS STROBUS	7'-6"	B & B	
10	WINDY PINE	PIBUS STROBUS	7'-6"	B & B	
11	WINDY PINE	PIBUS STROBUS	7'-6"	B & B	
12	WINDY PINE	PIBUS STROBUS	7'-6"	B & B	
13	WINDY PINE	PIBUS STROBUS	7'-6"	B & B	
14	WINDY PINE	PIBUS STROBUS	7'-6"	B & B	
15	WINDY PINE	PIBUS STROBUS	7'-6"	B & B	
16	WINDY PINE	PIBUS STROBUS	7'-6"	B & B	

THESE PLANS ARE ACCURATE & ARE IN COMPLIANCE WITH SECTION 55-79.59 CODE OF VIRGINIA, AS AMENDED

- NOTES:
1. ALL BUILDING LIGHTS AND GROUND FLOOD LIGHTS IN PROXIMITY OF BLDG 4 TO GO TO THEIR CLOCK #1.
 2. ALL BUILDING LIGHTS AND GROUND FLOOD LIGHTS IN PROXIMITY OF BLDG 5 TO GO TO THEIR CLOCK NO.2
 3. ALL FLOOD LIGHTS TO GO TO THEIR CLOCK NO.3
 4. ALL BUILDING LIGHTS AND GROUND FLOOD LIGHTS IN PROXIMITY OF BLDG 6 TO GO TO THEIR CLOCK NO.4
 5. ALL BUILDING LIGHTS AND GROUND FLOOD LIGHTS IN PROXIMITY OF BLDG 7 TO GO TO THEIR CLOCK NO.5
 6. ALL BUILDING LIGHTS AND GROUND FLOOD LIGHTS IN PROXIMITY OF BLDG 8 TO GO TO THEIR CLOCK NO.6
 7. ALL BUILDING LIGHTS AND GROUND FLOOD LIGHTS IN PROXIMITY OF BLDG 9 TO GO TO THEIR CLOCK NO.7

LANDSCAPING & LIGHTING PLAN
SCALE: 1"=30'-0"

WILLIAMSBURG OFFICE & PARK

LANDSCAPING & LIGHTING PLAN

DATE: FEBRUARY 15, 1995

REVISIONS:

NO.	DATE	DESCRIPTION
1	2/15/95	ISSUED FOR PERMIT

TWO SHEETS IN THE PROPERTY OF KARL E. KOHLER ASSOCIATES ARCHITECTS AND IS NOT TO BE REPRODUCED OR USED FOR ANY PROJECT, IN WHOLE OR IN PART WITHOUT THEIR EXPRESS WRITTEN PERMISSION.

KARL E. KOHLER ASSOCIATES AIA ARCHITECTS

10000 WEST WINDY PINE DRIVE, WILLIAMSBURG, VIRGINIA 23180

PHONE: 757-237-2200
FAX: 757-237-1970