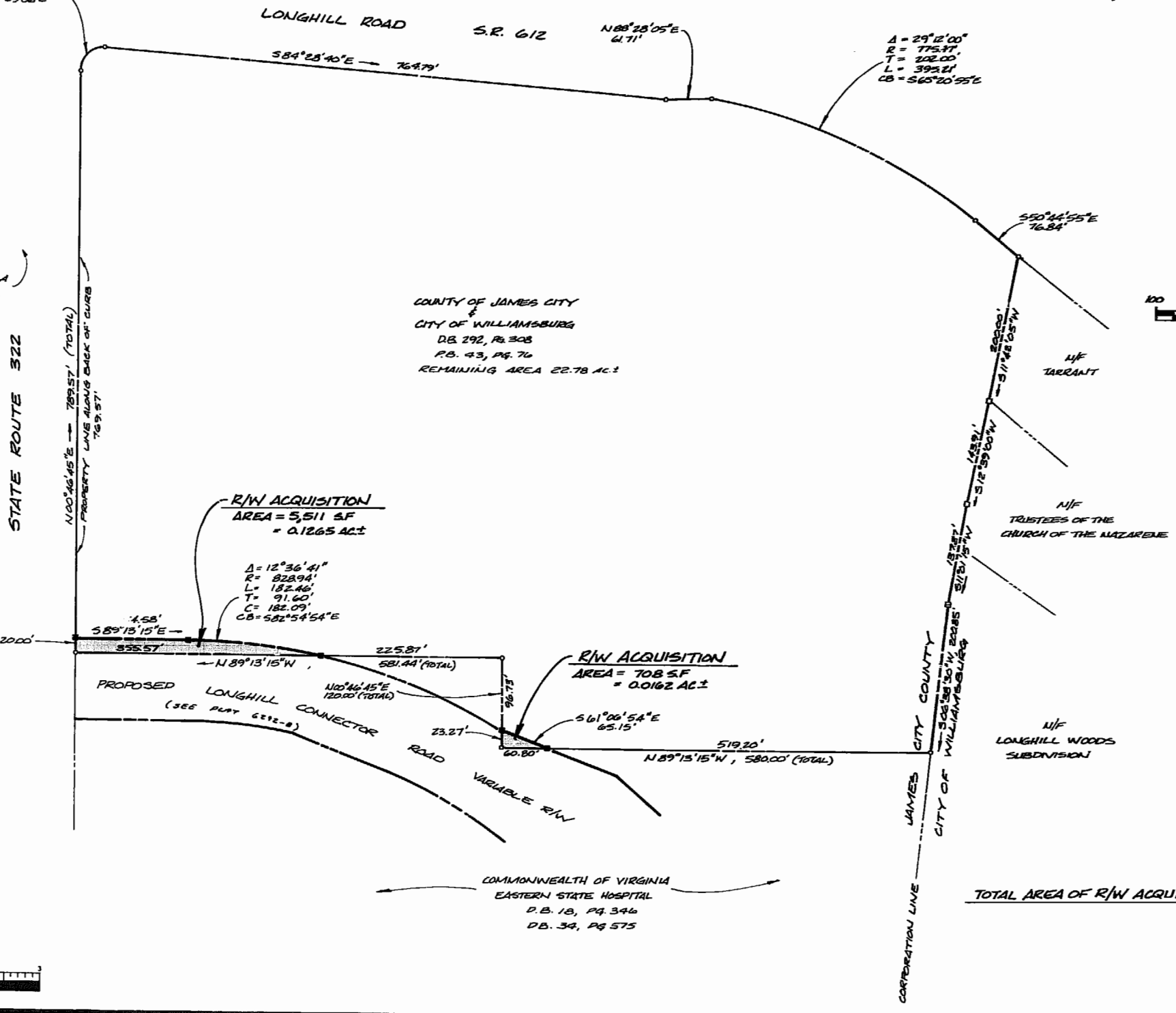
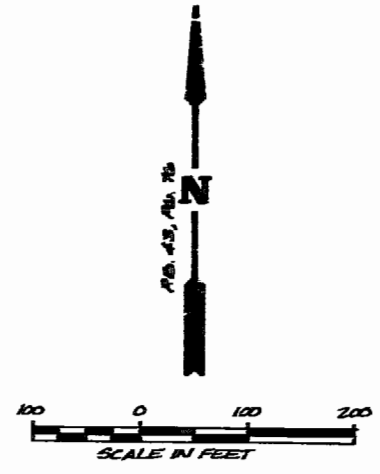


$\Delta = 94^{\circ}44'40''$   
 $R = 30.00'$   
 $T = 52.59'$   
 $L = 49.61'$   
 $CB = N48^{\circ}09'06''E$

$\Delta = 29^{\circ}12'00''$   
 $R = 175.97'$   
 $T = 202.00'$   
 $L = 395.81'$   
 $CB = S65^{\circ}20'55''E$

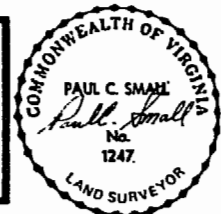
COMMONWEALTH OF VIRGINIA  
 EASTERN STATE HOSPITAL  
 D.B. 18, PG. 346  
 D.B. 34, PG. 575

COUNTY OF JAMES CITY  
 CITY OF WILLIAMSBURG  
 D.B. 292, PG. 308  
 P.B. 43, PG. 76  
 REMAINING AREA 22.78 AC $\pm$



**AES**, a professional corporation  
 1761 Jamestown Road, Williamsburg, Va. 23185  
 804-253-0040  
 Engineering, Planning, Surveying

**PLAT FOR CONVEYANCE AND DEDICATION OF RIGHT-OF-WAY**  
 CONTAINING 0.1428 AC.  
 FROM: COUNTY OF JAMES CITY AND CITY OF WILLIAMSBURG  
 TO: VIRGINIA DEPARTMENT OF TRANSPORTATION  
 BERKELEY DISTRICT JAMES CITY COUNTY VIRGINIA



937 nm	
Recorded 5/19/87	Day of Oct 19 87
P. B. No. 364	462
Usher Steward	Clerk
No. DATE	REVISION / COMMENT / NOTE
	BY

Designed GAN	Drawn GSB
Scale 1"=100'	Date JULY 2, 1987
Project No. 6292-C	
Drawing No. PLAT	