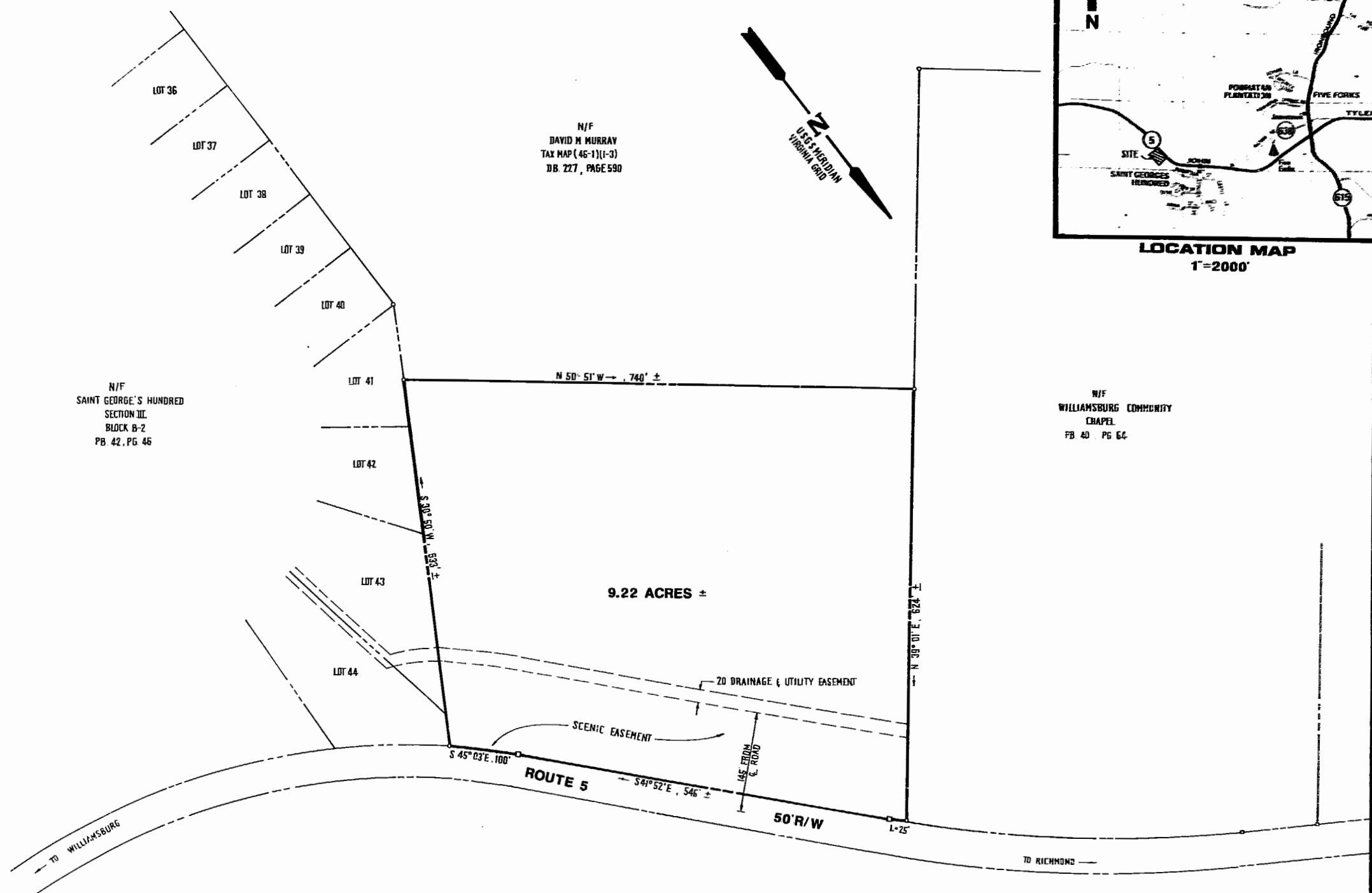


LOCATION MAP
1"=2000'



N/F
DAVID M MURRAY
TAX MAP (46-1)(1-3)
DB. 227, PAGE 590

N/F
SAINT GEORGE'S HUNDRED
SECTION III
BLOCK B-2
PB 42, PG 46

N/F
WILLIAMSBURG COMMUNITY
CHAPEL
FB 40, PG 64

9.22 ACRES ±

NOTE: THIS PLAT REPRESENTS A COMPILATION
OF EXISTING OFFICE INFORMATION AND
DOES NOT REPRESENT AN ACTUAL FIELD
SURVEY.

9:22am.
Recorded 5th day of Oct. 1987
D.B. No. 367, pages 449
Wilma S. Ward, Clerk



AES, a professional corporation
1761 Jamestown Road, Williamsburg, Va. 23185
804-253-0040
Engineering, Planning, Surveying

PRELIMINARY PLAT
SEVENTH DAY
ADVENTIST CHURCH SITE
9.22 ACRES ±
JAMES CITY COUNTY VIRGINIA



No.	DATE	REVISION / COMMENT / NOTE	BY

Designed	Drawn
ES	ES
Scale	Date
1"=100'	3/13/87
Project No.	
5851-A	
Drawing No.	
PLAT	