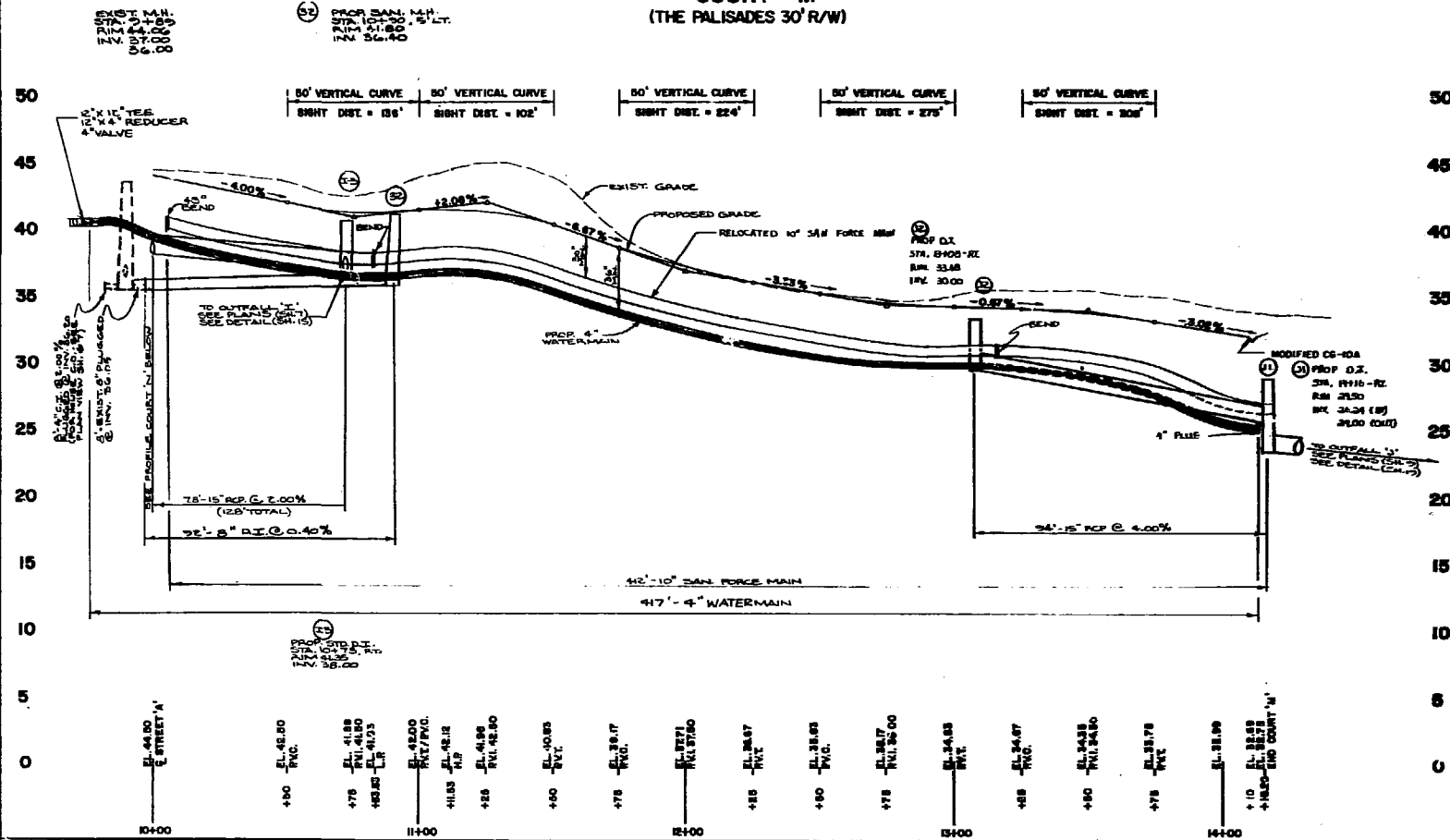
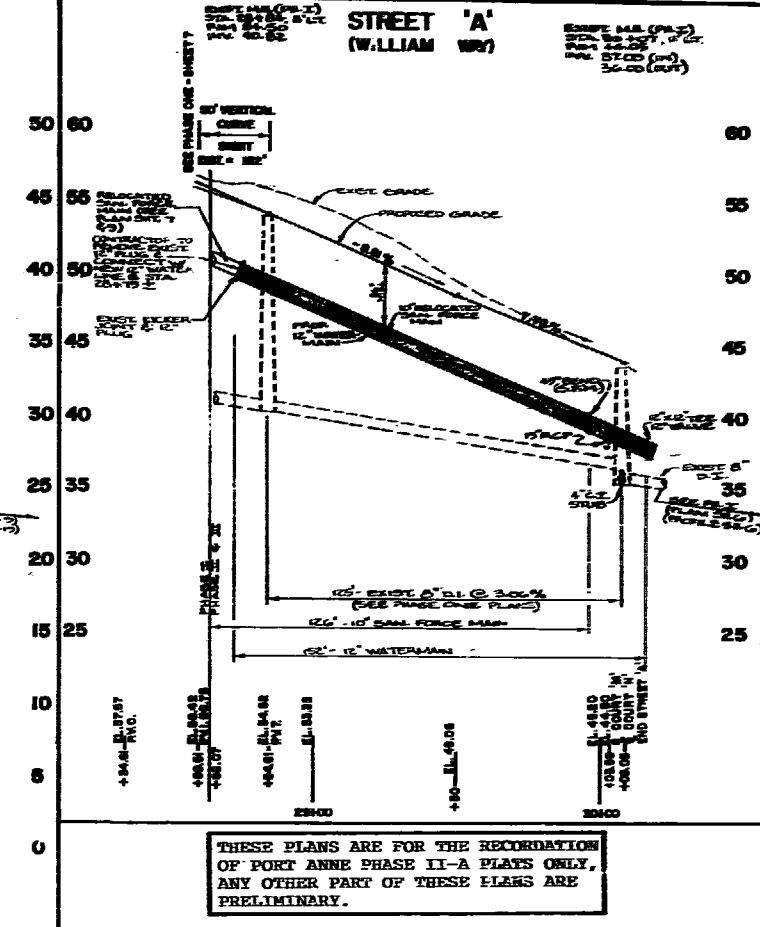


**COURT 'M'**  
(THE PALISADES 30' R/W)

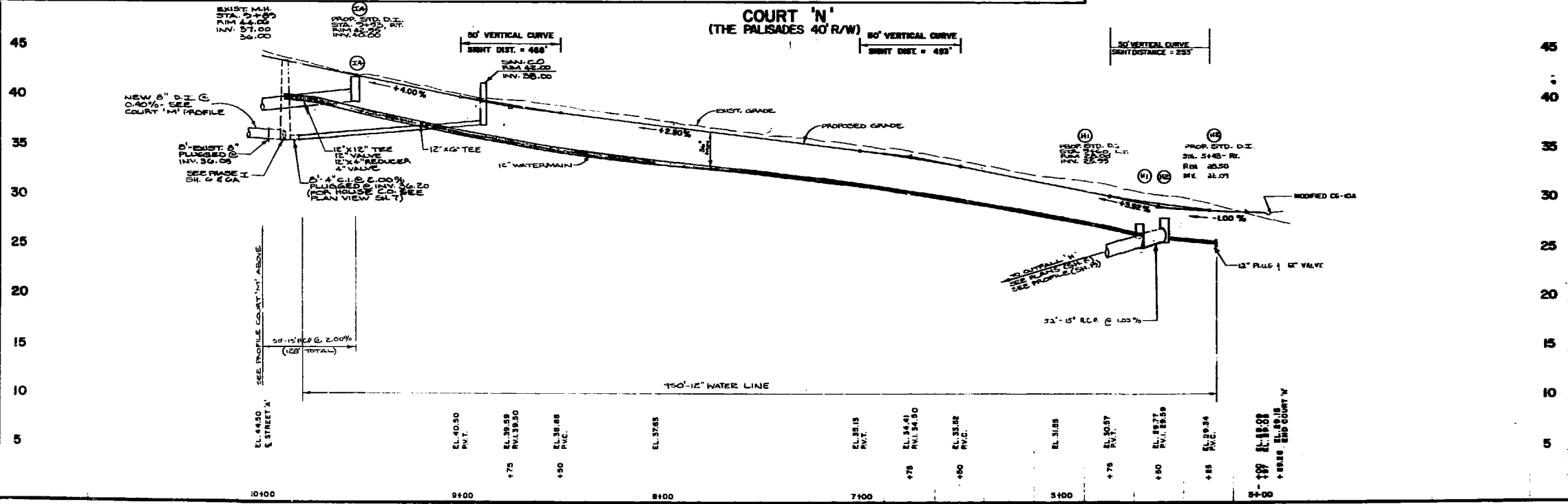


**STREET 'A'**  
(WILLIAM WAY)



THESE PLANS ARE FOR THE RECORDEATION OF PORT ANNE PHASE II-A PLATS ONLY. ANY OTHER PART OF THESE PLANS ARE PRELIMINARY.

**COURT 'N'**  
(THE PALISADES 40' R/W)



**Talbot & Associates Ltd.**  
A Public Limited Company  
11111 Littlewood Road, Littleton, Colorado 80120  
Tel: (303) 751-1111

**PORT ANNE**  
PHASE TWO THREE  
WILLIAMSBURG, VIRGINIA



Designed	WCB/CPL
Drawn	E.J.G./E.A.W.
Checked	AMS
Scale	VERT. 1"=5' HORIZ. 1"=24'
Date	8/28/85
File No.	8-24019
Project No.	24019A
Sheet No.	12